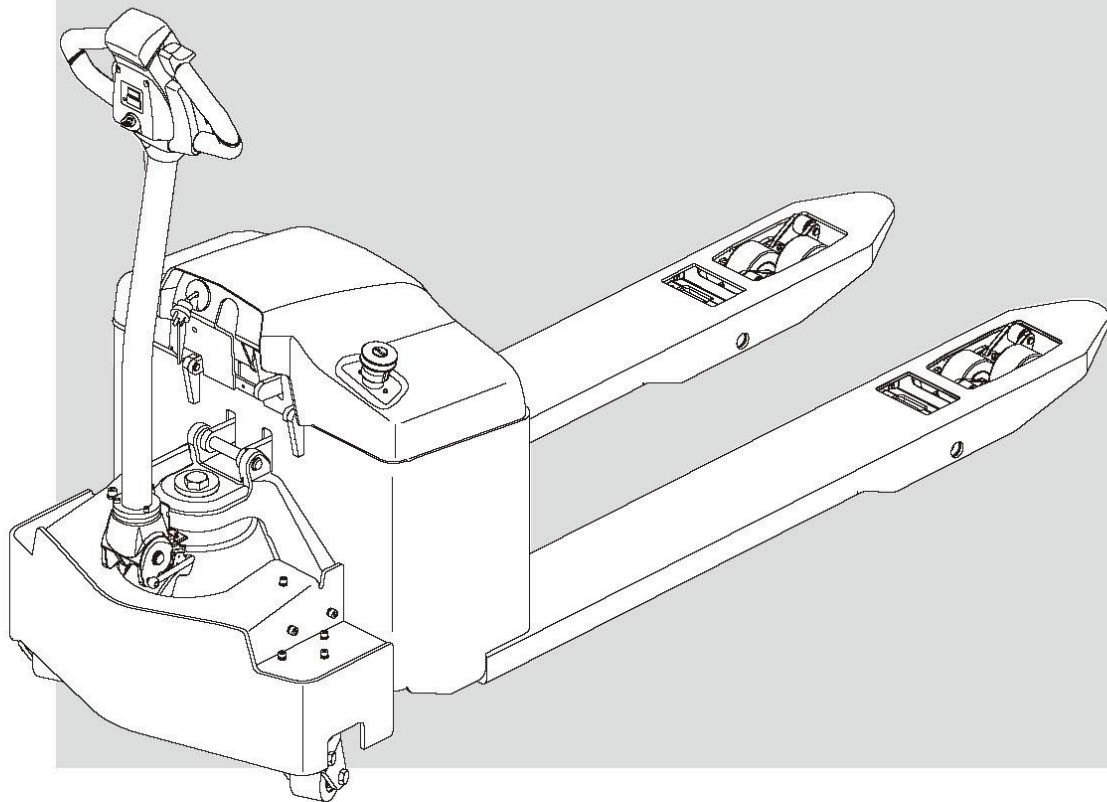


印中力

EPT16-ET EPT20-ET Electric Pallet Truck **Parts Manual** 电动搬运车 零件目录



CE
CE CERTIFICATE

Part No.50800000503
V2 07/2020

PARTS ORDERING INSTRUCTIONS

HOW TO ORDER

When you order, supply the part number, quantity, model and serial numbers of your machine. Supplying this information will assure prompt, efficient handling of your order. Since your dealer carries many parts in stock and maintains up-to-date prices on all parts, he will be able to process your order immediately. If, for some reason, the part is not in stock, he will order it from the factory. In either event, he maintains a current file of service manuals, which give all available parts ordering or technical information.

WHERE TO ORDER

Always order parts from the dealer who sold you your truck. If it is necessary for the dealer to order parts from the factory, he is able to get prompt service for you. Parts are shipped in accordance with shipping instructions given on the order.

INSTRUCTIONS FOR RETURNING PARTS

Under NO CIRCUMSTANCES will parts be accepted at the factory for credit without prior approval. We cannot accept responsibility for parts returned without authorization. If you have some parts which must be returned, contact your dealer. If he believes parts should be returned, he will arrange for authorization to return the parts.

CHANGES

When changes are made to the machine, revised pages for this manual will be issued. These pages must be inserted in your parts manual as soon as they are received. Failure to keep your parts manuals up to date will result in confusion and may cause you to order wrong parts.

EP EQUIPMENT CO.,LTD.

Address: XIAQUAN,DIPU,ANJI,ZHEJIANG,CHINA

Tel:400-880-2178

Net: www.ep-ep.com

Email:epparts@ep-ep.com

PM1116 07.20

零件订购说明

如何订购

当您订购的时候，您需要提供搬运车零件的编号，数量，型号和序列号。提供这些信息能够保证您的订购更加的高效。

因为您的经销商有很多零件的存货，而且需要保持所有零件的价格是最新的，所以他会尽快地处理您的订购需求。假如因为某些原因，存货中没有这个零件，那么他会从公司订货。无论怎么样的情况，他手里都会有一份服务手册文件，它能提供所有可用的零件的订购信息或者技术信息。

订购地点

当您需要订购零件时，请到销售给您搬运车的经销商那里订购。如果经销商有必要从公司订购零件，他能为您提供快捷的服务。根据您的订购信息，零件和它对应的操作说明会一起装好。

零件的退还说明

一般情况下，因为信用的关系，退还的零件没有事先的同意，是不会被公司认可的。我们不会对没有经过授权但退还过来的零件负责。

如果您有一些零件一定要退还，请联系您的经销商。若经销商确认零件可以退还，则其会安排授权要退还的零件。

技术修改

当搬运车技术有修改时，这本手册的修正页会重新发行。当您拿到这些修正页时，您一定要立即把它们插入到您的零件手册中。若没有及时的更新您的零件手册，则可能会导致您订购、维护等方面的错误。

浙江中力机械有限公司

地址：浙江省安吉县递铺镇霞泉村中力园区

电话：400-880-2178

网址：www.ep-ep.com

邮箱：epparts@ep-ep.com

PM1116 01.20

GENERAL INFORMATION

INDEX

This parts manual is arranged for easy identification of parts .The index at the front of the catalog gives location of major groups and assemblies.

PART LIST

The Index, describes the item on the Figure you are looking at. The Part No. is a numerical description of the item and the part ordering number. The Part Name is a description of the part number in alphabetical form. The No.is the quantity used on the machine. The Applied Date is a description when the part is applicable.The Remark is the explanation of the part for a supplement such as the model the capability, the characteristic etc.

HOW TO READ PARTS MANUAL

HELP 1:

	Index 序号	Part No. 零件编号	Part Name 零件名称	No. 数量	Applied Date 适用时间	Remark 备注
A	9	1120-342101-00	Button Bracket (L)	1		
	10	1120-342002-00	Horn Button	1		
		1120-342005-00	Pin	2		
		1120-342003-00	Spring	2		
		1120-342004-00	Button Bracket	1		
	11	0000-000039-00	Screw ST3.5×9.5	6		
B	22	2108-540000-00	Bracket	1		
	23	2108-550000-00-01	Battery	2		60AH / 12V
	23	2108-550000-00-02	Battery	2		80AH / 12V
	24	0000-000378-00	Screw M4×16	2		

A: The part of Index 19 is a discreteness with two kings of parts.It denotes **Not Sold Separately**.

B: The part of Index 23 is Optional.

Index 序号	Part No. 零件编号	Part Name 零件名称	No. 数量	Applied Date 适用时间	Remark 备注	
C →	8	Ck11-560003-00	Jc100 Switch	拇指开关	1	
	9 01	CK11-520008-00	JC100 Switch Wire Harness	JC100 线束	1	Superseded/代替
	02	CK11-520008-00	JC100 Switch Wire Harness	JC100 线束	1	
	10	0000-000001-00	Screw M6X20	螺钉	2	

D →	7 01	2125-410004-00	Cap	导向套	1	-071011	
	02	2125-410004-0A	Cap	导向套	1	071011-	
	8	2108-550000-00	Battery	电瓶	2		
	9	0000-000378-00	Screw M4×16	螺钉	2		
	10	2125-410005-00	Ring Back Up 50X45X6	支撑环	1		
	11 01	0000-000197-00	Ring Packig 40X50X6	Yx 密封圈	1		Old
02	0000-000512-00	Ring Packig 40X50X6	Yx 密封圈	1		New	

C: The part of index 9 is improved and upgraded. Please use the **New Part Number** when ordering.

D: The part of Index 7 has an **Applicability**, because it's our policy to constantly improve our products.

The part of Index 11 is same but the Part Number is changed. And please use the new Part Number when you order this part.

1. Record by time

- 070911 : Ending on July 09, 2011.

071011- : Beginning on July 10, 2011.

2. Record by serial number

Index 序号	Part No. 零件编号	Part Name 零件名称	No. 数量	Applied Date 适用时间	Remark 备注	
D →	7 01	2125-410004-00	Cap	导向套	1	-S2016344
	02	2125-410004-0A	Cap	导向套	1	S2016345-
	8	2108-550000-00	Battery	电瓶	2	
	9	0000-000378-00	Screw M4×16	螺钉	2	
	10	2125-410005-00	Ring Back Up 50X45X6	支撑环	1	
	11 01	0000-000197-00	Ring Packig 40X50X6	Yx 密封圈	1	Old
02	0000-000512-00	Ring Packig 40X50X6	Yx 密封圈	1	New	

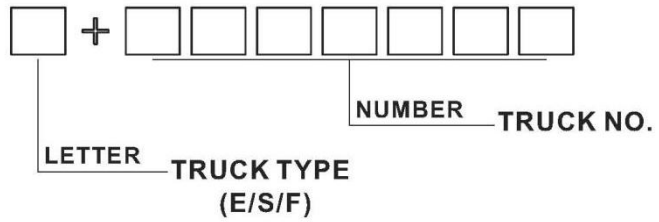
-S2016344 : Ending at S2016344

S2016345- : Starting at S2016345

There are three types of serial number:

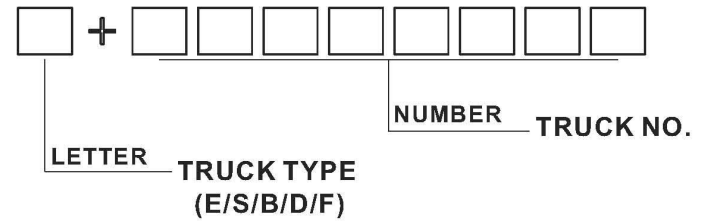
1) 1 (LETTER)+7 (NUMBERS)

Applied Date: Up to February 1,2015



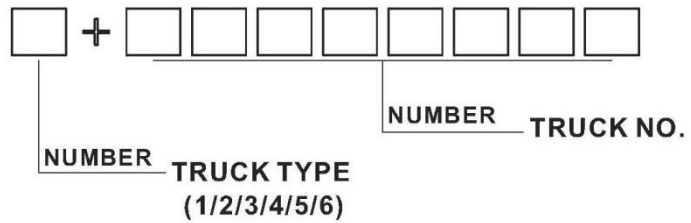
2) 1 (LETTER)+ 8 (NUMBERS)

Applied Date: From February 1,2015 to June 1,2015

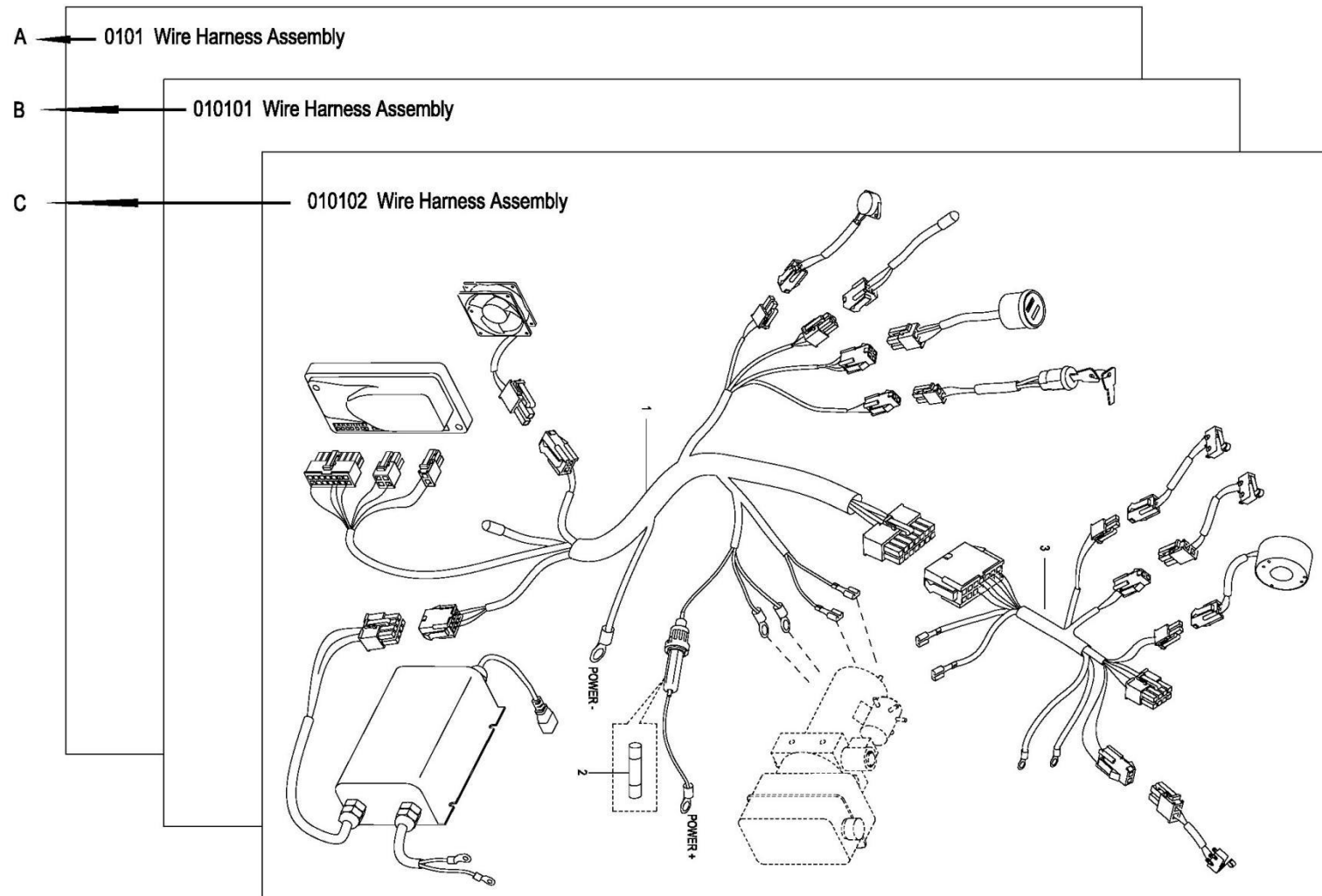


3) 1 (NUMBER)+ 8 (NUMBERS)

Applied Date: From June 1,2015



HELP 2:



A:Section 0101 is the original version.

B:Section 010101 is the version that some parts in the Section 0503 have been changed.

C:Section 010102 is the version that some parts in the Section 050301 have been changed.

When you order, Please locate specific parts information of your truck by the Applied Date of parts in each version.

概要

目录

将零件目录分成几个易识别的部分，并把主要结构和总成放置在索引目录中。

零件明细表

Index 描述的是在插图上，您想要找的项目。**Part No.**是零件的一系列描述和它的订购号码。**Part Name** 是用文字的形式描述零件的号码。**No.**代表的是零件在搬运车上使用的数量。**Applied Date** 表示的是零件适用的时间范围。**Remark** 是用来补充说明零件信息(例如车型、性能和特征等)。

怎么读取零件明目录

帮助 1:

Index	Part No.	Part Name	No.	Applied Date	Remark	
序号	零件编号	零件名称	数量	适用日期	备注	
A	18	0000-000667-00	Bearing 61905Z	轴承	1	
	19	1115-200004-00	Helical Gear	大斜齿	1	
		1115-200005-00	Helical Gear	小斜齿	1	
	20	0000-000680-00	Bearing 16003Z	轴承	1	
B	22	2108-540000-00	Bracket	电瓶固定板	1	
	23	1115-500005-00-01	Battery	电瓶	2	65AH / 12V
	23	1115-500005-00-02	Battery	电瓶	2	85AH / 12V
	24	0000-000378-00	Screw M4×16	螺钉	2	
C	8	ck11-560003-00	JC100 Switch	拇指开关	1	
	9	01 ck11-520008-00	JC100 Switch Wire Harness	JC100 线束	1	Cancelled/取消
		02 ck11-520008-0A	JC100 Switch Wire Harness	JC100 线束	1	
	10	0000-000001-00	Screw M6×20	螺钉	2	

A: 序号 19 表示的是一个由两种零件组成的组件，不以单件形式出售。

B: 序号 23 表示该零件有几个品种可供您的选择。

C: 序号 9 表示该零件进行了改进和升级, 订购时请使用新的零件编码。

D: 序号 7 表示该零件有一个适用的时间范围。这是因为我们在不断地进行产品的升级。

序号 11 表示的都是同一种零件, 只是零件编码有所变更。因此, 当您订购这类零件时, 请您使用新的零件编码。

Index	Part No.	Part Name	No.	Applied Date	Remark	
序号	零件编号	零件名称	数量	适用日期	备注	
D	7 01	2125-410004-00	Cap	导向套	1	-071011
	02	2125-410004-0A	Cap	导向套	1	071011-
	8	0000-000084-00	Ring Wiper 35×43×5-6.5	防尘圈	1	
	9	0000-000370-00	O-ring 40×3.1	O型密封圈	1	
	10	2125-410005-00	Ring Back Up 50×45×20	支撑环	1	
	11 01	0000-000197-00	Rod Packing 40×50×6	Yx 密封圈	1	Old
	02	0000-000512-00	Rod Packing 40×50×6	Yx 密封圈	1	New

1. 用时间记录

- 070911 : 截止到 2011 年 7 月 09 日

071011- : 起始于 2011 年 7 月 10 日

2. 用序列号记录

Index	Part No.	Part Name	No.	Applied Date	Remark	
序号	零件编号	零件名称	数量	适用日期	备注	
D	7 01	2125-410004-00	Cap	导向套	1	-S2016344
	02	2125-410004-0A	Cap	导向套	1	S2016345-
	8	0000-000084-00	Ring Wiper 35×43×5-6.5	防尘圈	1	
	9	0000-000370-00	O-ring 40×3.1	O型密封圈	1	
	10	2125-410005-00	Ring Back Up 50×45×20	支撑环	1	
	11 01	0000-000197-00	Rod Packing 40×50×6	Yx 密封圈	1	Old
	02	0000-000512-00	Rod Packing 40×50×6	Yx 密封圈	1	New

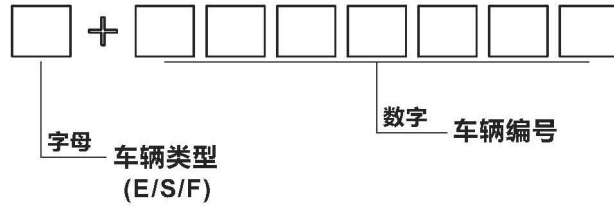
-S2016344 : 截止序列号 S2016344

S2016345- : 起始序列号 S2016345

有三种序列号形式:

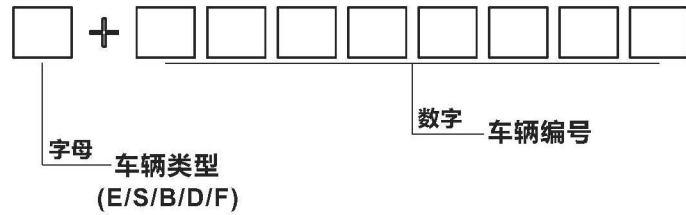
1) 1 (字母) + 7 (数字)

适用时间: 截止到 2015 年 2 月 1 日



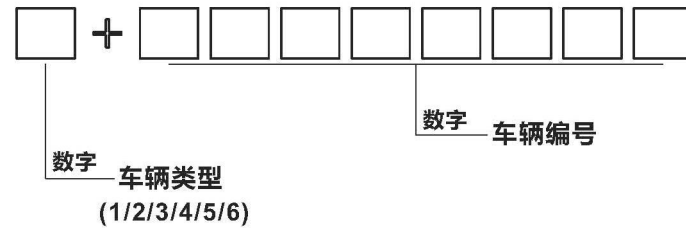
2) 1 (字母) + 8 (数字)

适用时间: 2015 年 2 月 1 日至 2015 年 6 月 1 日

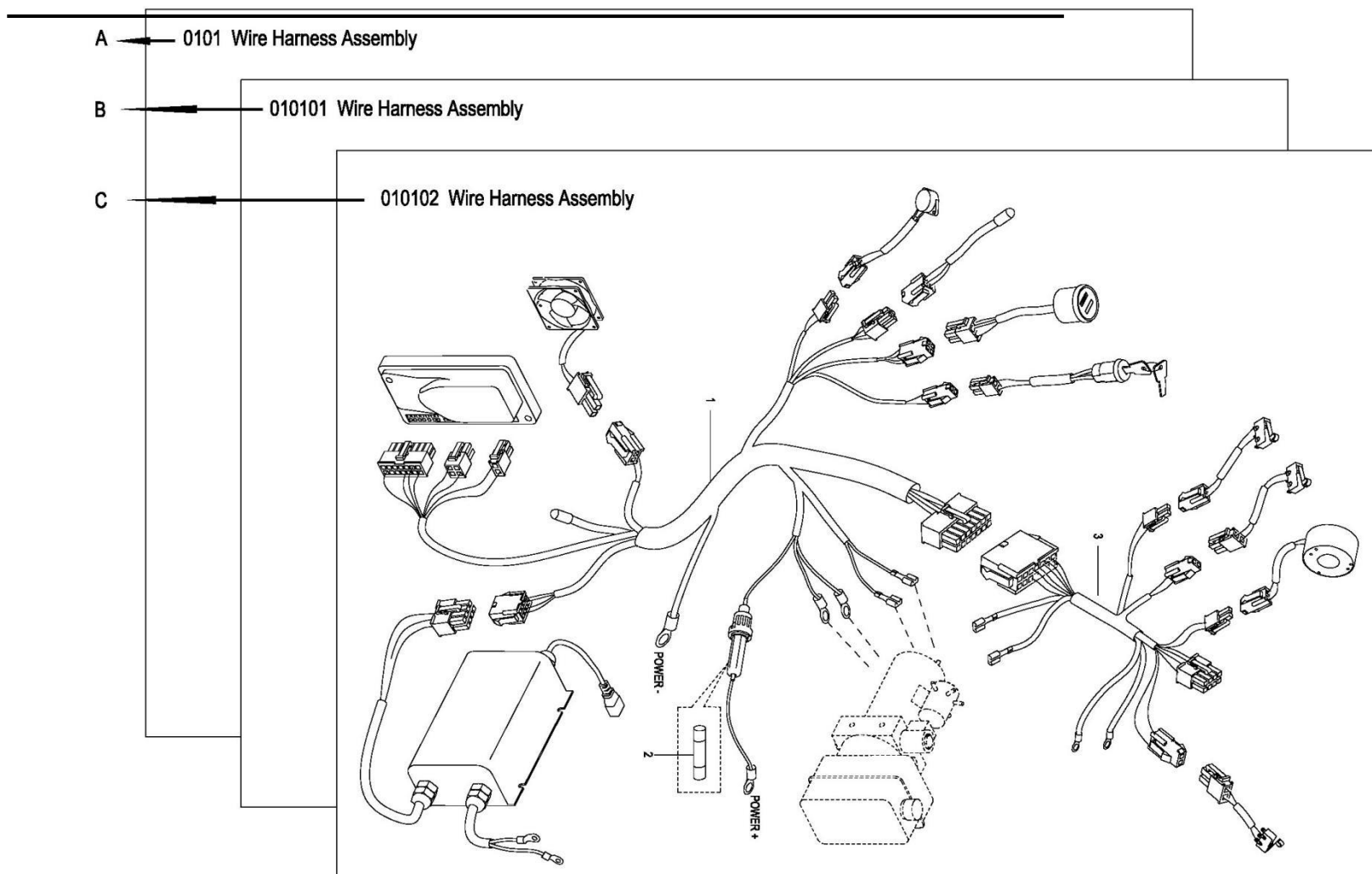


3) 1 (数字) + 8 (数字)

适用时间: 2015 年 6 月 1 日至今



帮助 2:



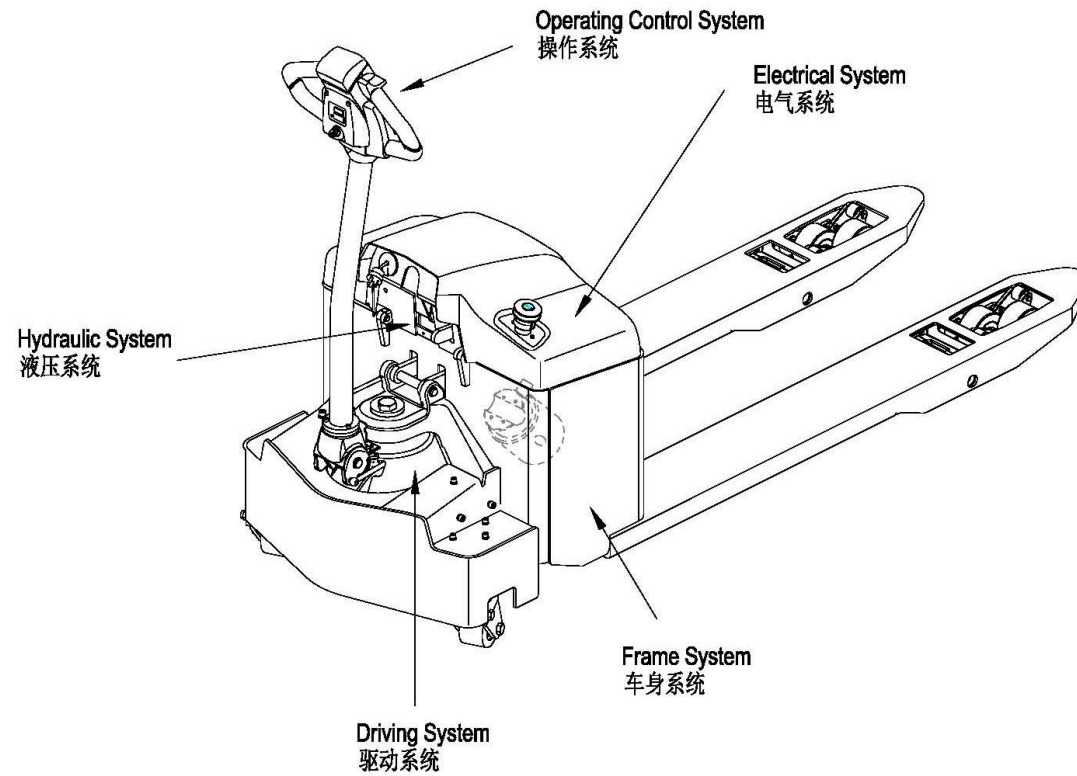
A: 章节 0101 表示原始版本;

B: 章节 010101 表示在原始版本 (章节 0503) 上零件有所变更;

C: 章节 010102 表示在变更版本 (章节 050301) 上零件有所变更。

当您订购零件时, 请根据每个版本中零件的适用时间来判断您所选购车型的零件信息。

Major Assemblies



WARNING: Note that illustrations of assemblies and components may not necessarily conform to the exact installation as they appear on your truck. But this Manual can help you locate specific parts information of your truck.

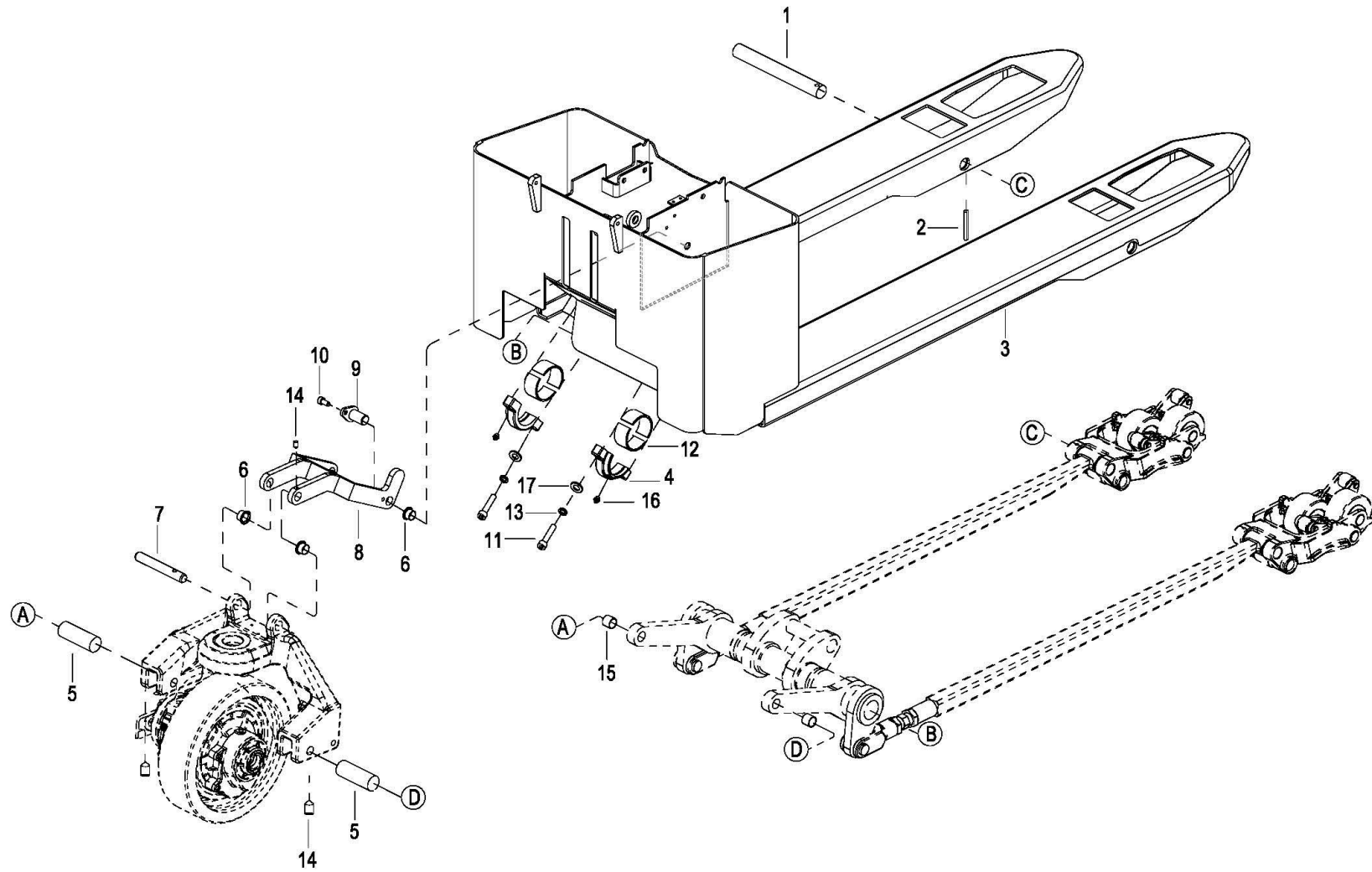
注意: 表达在零件目录上的总成和结构内容可能不会完全地出现在您的车型上，但是您可以在零件目录中查询到您所选购车型的零件信息。

Index 目录

1000 Frame System 车身系统	1
0101 Frame System 车身系统.....	2
0102 Connecting Link, For EPT16-ET 连杆总成.....	4
0103 Connecting Link, For EPT20-ET 连杆总成.....	7
0104 Load Wheel, For EPT16-ET 承载轮.....	10
0105 Load Wheel, For EPT20-ET 承载轮.....	12
0106 Driving Cover Assembly 驱动外罩总成.....	14
0107 Caster Assembly 浮动万向轮总成.....	16
0108 Cover Assembly 外罩总成.....	18
2000 Driving System 驱动系统	20
0201 Driving System 驱动系统.....	21
0202 Driving Assembly 驱动单元总成.....	23
3000 Operating Control System 操作系统	29
0301 Operating Control System 操作系统.....	30
0302 Control Pod Assembly 手柄头总成.....	32
0303 Upper Cover Assembly 上盖总成.....	36
030301 Upper Cover Assembly 上盖总成.....	38
4000 Hydraulic System 液压系统	42
0401 Hydraulic Assembly 液压总成.....	43
0402 Lifting Cylinder, For EPT-20ET 起升油缸.....	45
0403 Lifting Cylinder, For EPT-16ET 起升油缸.....	47
0404 Pump & Motor Assembly 液压站总成.....	49
5000 Electrical System 电气系统	52
0501 Setting Board Assembly 电器板总成.....	53
050101 Setting Board Assembly 电器板总成.....	56
0502 Wire Harness Assembly 线束总成.....	59
0503 Cable Assembly 电缆总成.....	61

1000
Frame System
车身系统

0101 Frame System
车身系统



0101 Frame System

车身系统

Index 序号	Part No. 零件编号	Part Name 零件名称	No. 数量	Applied Date 试用日期	Remark 备注
1	1114-130002-00	Shaft 轮架安装轴	2		
2	0000-000708-00	Round Pin ø5×35 弹簧销	2		
3	1116-110000-0B-01	Frame 车架	1		560x1150mm
3	1116-110000-1B-01	Frame 车架	1		685x1150mm
4	01 1116-130002-00	Clamps 卡箍	2	-427100073	
	02 1116-130002-0A	Clamps 卡箍	2	427100074-	EP20191120-02
5	1116-130004-00	Short Shaft 短轴	2		
6	0000-001708-00	Bushing1615 F 自润滑翻边轴套	4		
7	1116-130005-00	Shaft 长销轴	1		
8	1116-132000-00	Upper Link 上连杆	1		
9	1116-131000-00	Short Pin 上连杆短销轴	2		
10	0000-000077-00	ScrewM6×12 螺钉	4		
11	01 0000-000878-00	Bolt M12×45 螺栓	4	-427100073	
	02 302001000078	ScrewM14×45 螺钉	4	427100074-	EP20191120-02
12	1116-130003-00	Bushing 轴瓦	4		
13	01 0000-000060-00	Lockwasherø12 弹垫	4	-427100073	
	02 0000-000233-00	Lockwasherø14 弹垫	4	427100074-	EP20191120-02
14	0000-001713-00	Screw M6×8 紧定螺钉	3		
15	0000-001629-00	Bushing1615 自润滑轴套	2		
16	0000-000013-00	Grease Fitting M8 直通式压注油杯	2		
17	0000-000379-00	Flatwasherø14 平垫	4	427100074-	EP20191120-02

0102 Connecting Link, For EPT16-ET

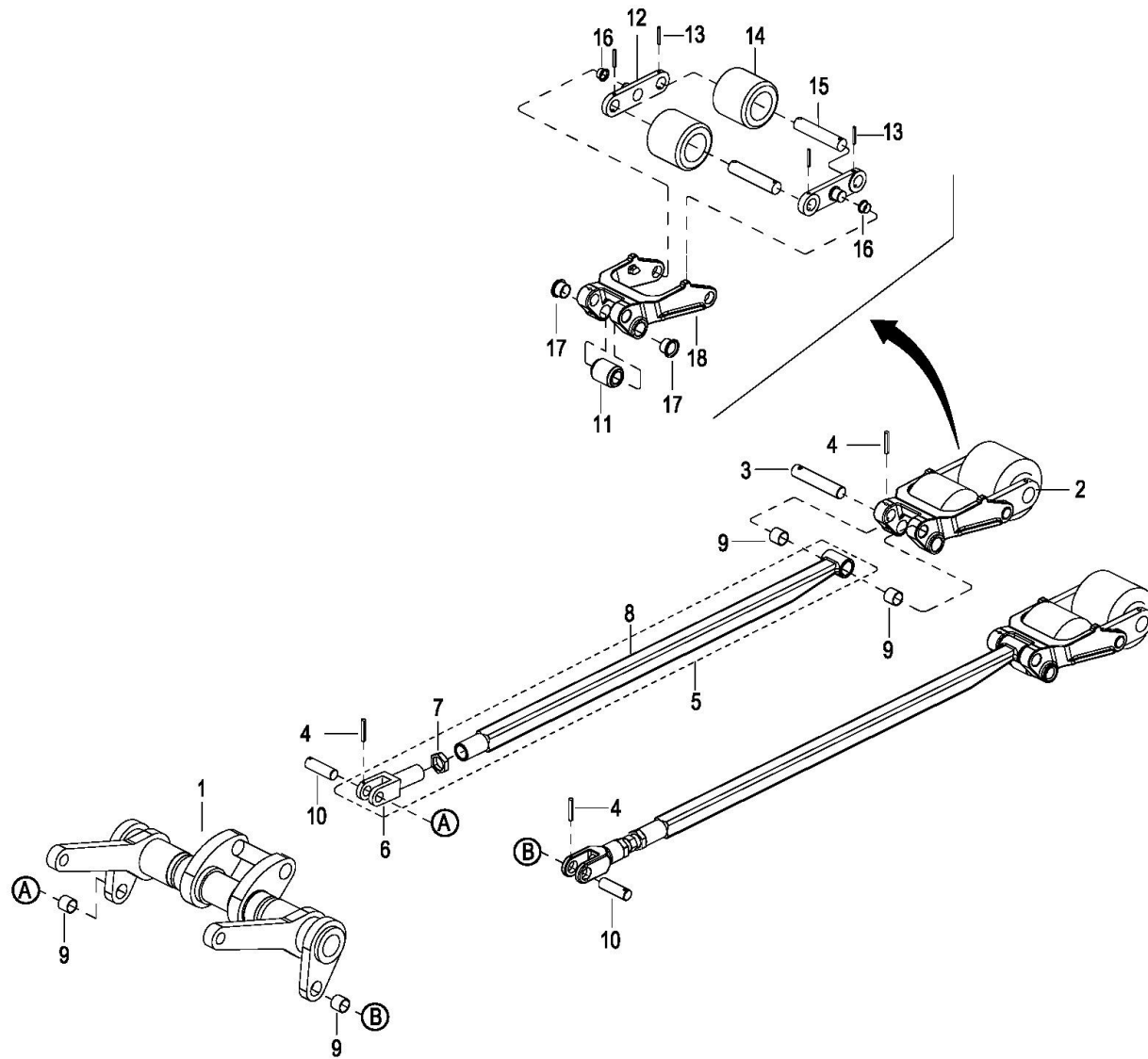
连杆总成

Index 序号	Part No. 零件编号	Part Name 零件名称	No. 数量	Applied Date 试用日期	Remark 备注
1	1116-133000-00	Down Link 下连杆	1		W=560mm
1	1116-133000-1A	Down Link 下连杆	1		W=685mm
2	1116-130007-00-B	Wheel Bracket Assembly 轮架总成	2		Pos.11-21
3	1115-130003-00	Shaft 长连杆安装轴	2		
4	0000-000708-00	Round Pin $\phi 5 \times 35$ 弹簧销	4		
5	1114-131000-0C-02	Long Link 可调长连杆	2		Pos.6-8, Fork Length 1150mm Superseded by 1116-131000-00-03
5	1116-131000-00-01	Long Link 可调长连杆	2		Fork Length 800mm
5	1116-131000-00-02	Long Link 可调长连杆	2		Fork Length 1000mm
5	1116-131000-00-03	Long Link 可调长连杆	2		Fork Length 1150mm
5	1116-131000-00-04	Long Link 可调长连杆	2		Fork Length 1220mm
5	1116-131000-00-06	Long Link 可调长连杆	2		Fork Length1350mm
5	1116-131000-00-07	Long Link 可调长连杆	2		Fork Length 1500mm
6	1121-132001-00	Connector 连接头	2		
7	01 0000-000101-00	Nut M22 \times 1.5 螺母	2		Superseded by 1121-132010-00
	02 1121-132010-00	Nut M22 \times 1.5 薄螺母	2		EP20191126
8	1114-131100-0B-02	Long rod 长杆	2		Fork Length 1150mm Superseded by 1116-131100-00-03
8	1116-131100-00-01	Long rod 长杆	2		Fork Length 800mm
8	1116-131100-00-02	Long rod 长杆	2		Fork Length 1000mm
8	1116-131100-00-03	Long rod 长杆	2		Fork Length 1150mm
8	1116-131100-00-04	Long rod 长杆	2		Fork Length 1220mm
8	1116-131100-00-06	Long rod 长杆	2		Fork Length1350mm
8	1116-131100-00-07	Long rod 长杆	2		Fork Length 1500mm
9	0000-000011-00	Bushing2015 自润滑轴套	6		
10	1121-130003-00	Link Shaft 连杆轴	2		

11		1116-130009-00	Washer	转子	2		
12		1116-130006-00	Round Shaft	承载轮轴	4		
13		0000-001709-00	Pin Roll $\varnothing 10 \times 45$	销轴	4		
14		0000-000156-00	Screw M6 \times 10	紧定螺钉	4		
15		1116-134000-00	PU Wheel	PU 轮总成	4		See 0104
16		1116-130010-00	Climbing Wheel	爬坡轮	4		
17		0000-000908-00	Bushing2015F	自润滑翻边轴套	4		
18		0000-001327-00	Bushing1612 F	自润滑翻边轴套	4		
19		0000-000188-00	Pin 3.2 \times 20	开口销	4		
20		1116-130008-00	Splint	夹板	4		
21		1116-130007-00	Wheel Bracket	轮架	2		

0103 Connecting Link, For EPT20-ET

连杆总成



0103 Connecting Link ,For EPT20-ET

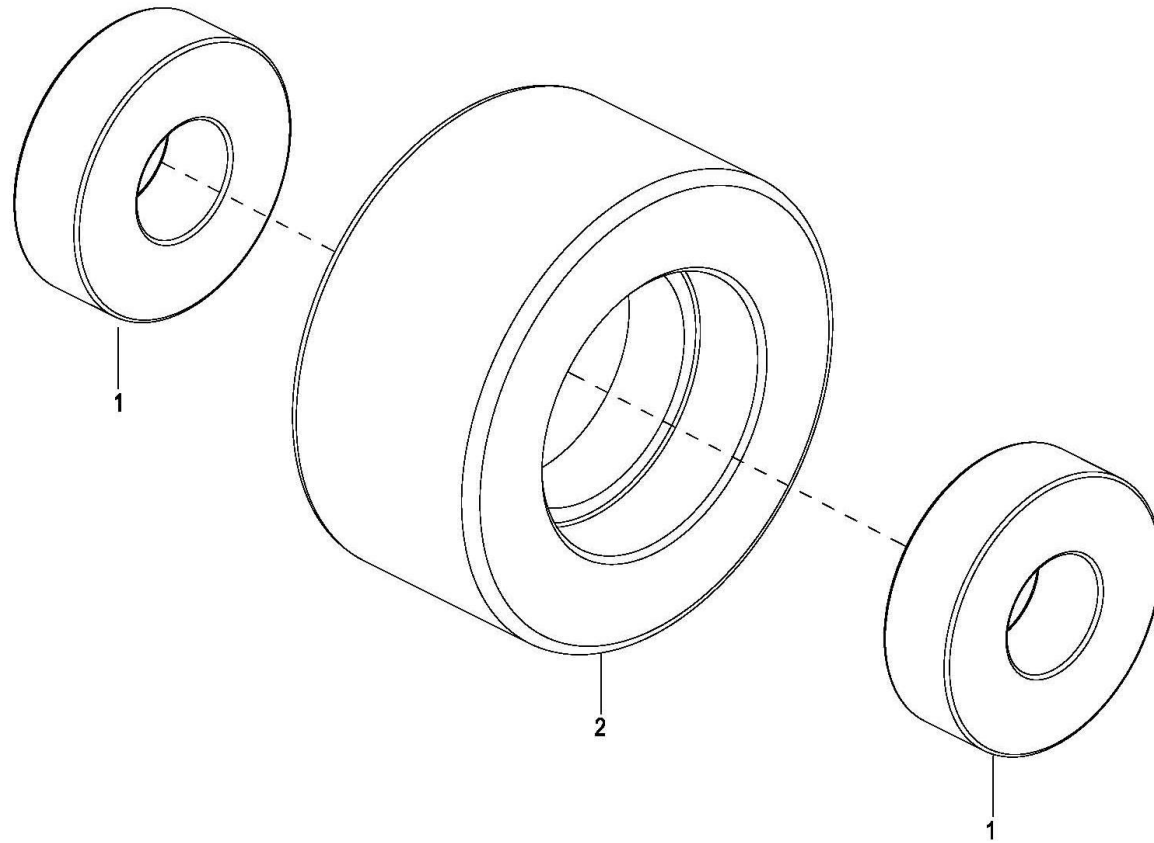
连杆总成

Index 序号	Part No. 零件编号	Part Name 零件名称	No. 数量	Applied Date 试用日期	Remark 备注
1	1116-133000-00	Down Link 下连杆	1		W=560mm
1	1116-133000-1A	Down Link 下连杆	1		W=685mm
2	1116-130007-A0-B	Wheel Bracket Assembly 轮架总成	2		Pos.11-18
3	1115-130003-00	Shaft 长连杆安装轴	2		
4	0000-000708-00	Round Pin ø5×35 弹簧销	4		
5	1114-131000-0C-02	Long Link 可调长连杆	2		Pos.6-8, Fork Length 1150mm Superseded by 1116-131000-00-03
5	1116-131000-00-01	Long Link 可调长连杆	2		Fork Length 800mm
5	1116-131000-00-02	Long Link 可调长连杆	2		Fork Length 1000mm
5	1116-131000-00-03	Long Link 可调长连杆	2		Fork Length 1150mm
5	1116-131000-00-04	Long Link 可调长连杆	2		Fork Length 1220mm
5	1116-131000-00-06	Long Link 可调长连杆	2		Fork Length1350mm
5	1116-131000-00-07	Long Link 可调长连杆	2		Fork Length 1500mm
6	1121-132001-00	Connector 连接头	2		
7	01 0000-000101-00	Nut M22×1.5 螺母	2		Superseded by 1121-132010-00
	02 1121-132010-00	Nut M22×1.5 薄螺母	2		EP20191126
8	1114-131100-0B-02	Long rod 长杆	2		Fork Length 1150mm Superseded by 1116-131100-00-03
8	1116-131100-00-01	Long rod 长杆	2		Fork Length 800mm
8	1116-131100-00-02	Long rod 长杆	2		Fork Length 1000mm
8	1116-131100-00-03	Long rod 长杆	2		Fork Length 1150mm
8	1116-131100-00-04	Long rod 长杆	2		Fork Length 1220mm
8	1116-131100-00-06	Long rod 长杆	2		Fork Length1350mm
8	1116-131100-00-07	Long rod 长杆	2		Fork Length 1500mm
9	0000-000011-00	Bushing2015 自润滑轴套	6		
10	1121-130003-00	Link Shaft 连杆轴	2		
11	1116-130009-00	Washer 转子	2		

12		1115-130006-0A	Splint	夹板	4		
13		0000-001457-00	Round Pin $\varnothing 4 \times 35$	弹性圆柱销	8		
14		1115-133000-00	Load Wheel	双轮总成	4		See 0105
15		1115-130007-0A	Shaft	承载轮销轴	4		
16		0000-001628-00	Bushing1812F	自润滑轴套	4		
17		0000-000908-00	Bushing2015F	自润滑翻边轴套	4		
18		1116-130007-A0	Wheel Bracket	轮架	2		

0104 Load Wheel, For EPT16-ET

承载轮

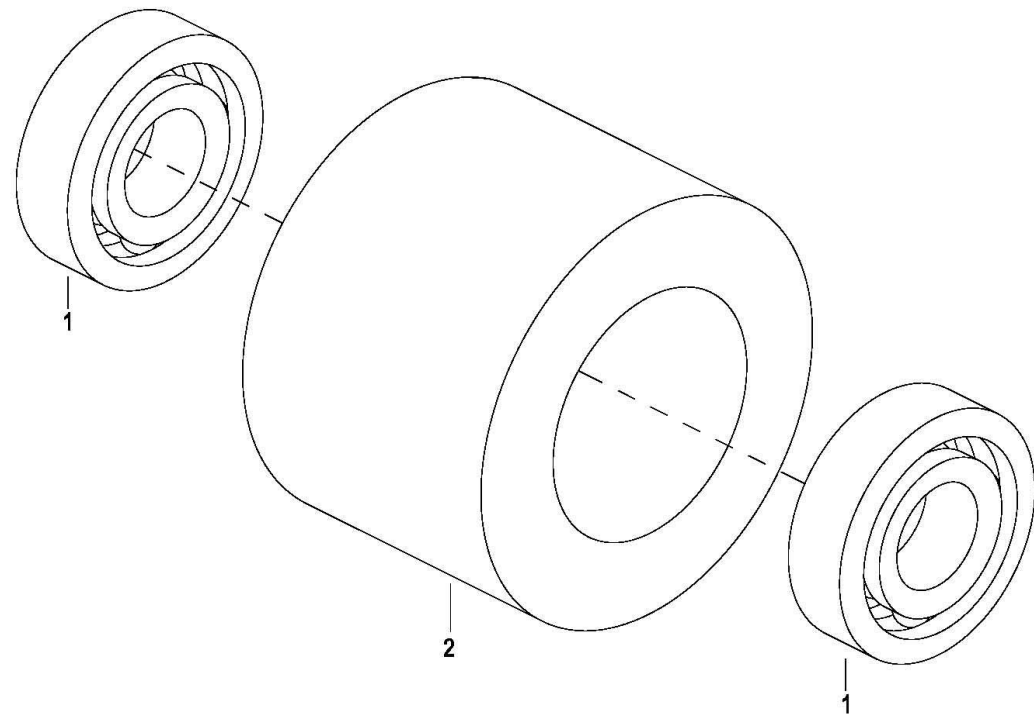


0104 Load Wheel,For EPT16-ET

承载轮

Index 序号	Part No. 零件编号	Part Name 零件名称		No. 数量	Applied Date 试用日期	Remark 备注
0	1116-134000-00	PU Wheel	PU 轮总成	1		Pos. 1-2
1	01 0000-000020-00	Bearing 6204-2Z	轴承	2	-427171687	
	02 309000000004	Bearing6204-2RS	轴承	2	427171688-	EP20190104
2	1116-134001-00	PU Wheel	PU 轮	1		

0105 Load Wheel, For EPT20-ET
承载轮



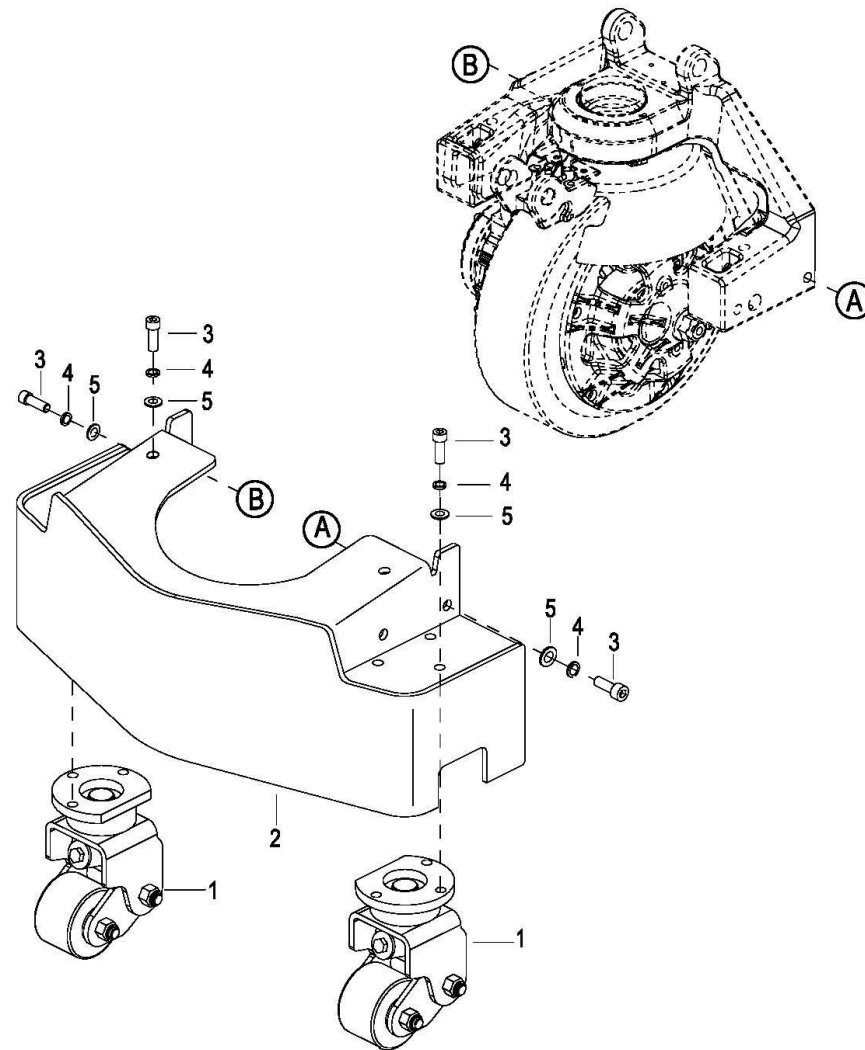
0105 Load Wheel, For EPT20-ET

承载轮

Index 序号	Part No. 零件编号	Part Name 零件名称		No. 数量	Applied Date 试用日期	Remark 备注
0	1115-133000-00	Load Wheel	双轮总成	1		Pos.1-2
1	01 0000-000020-00	Bearing 6204-2Z	轴承	2	-427171687	
	02 309000000004	Bearing6204-2RS	轴承	2	427171688-	EP20190104
2	1115-133002-00	PU Wheel Double	PU 双轮	1		

0106 Driving Cover Assembly

驱动外罩总成



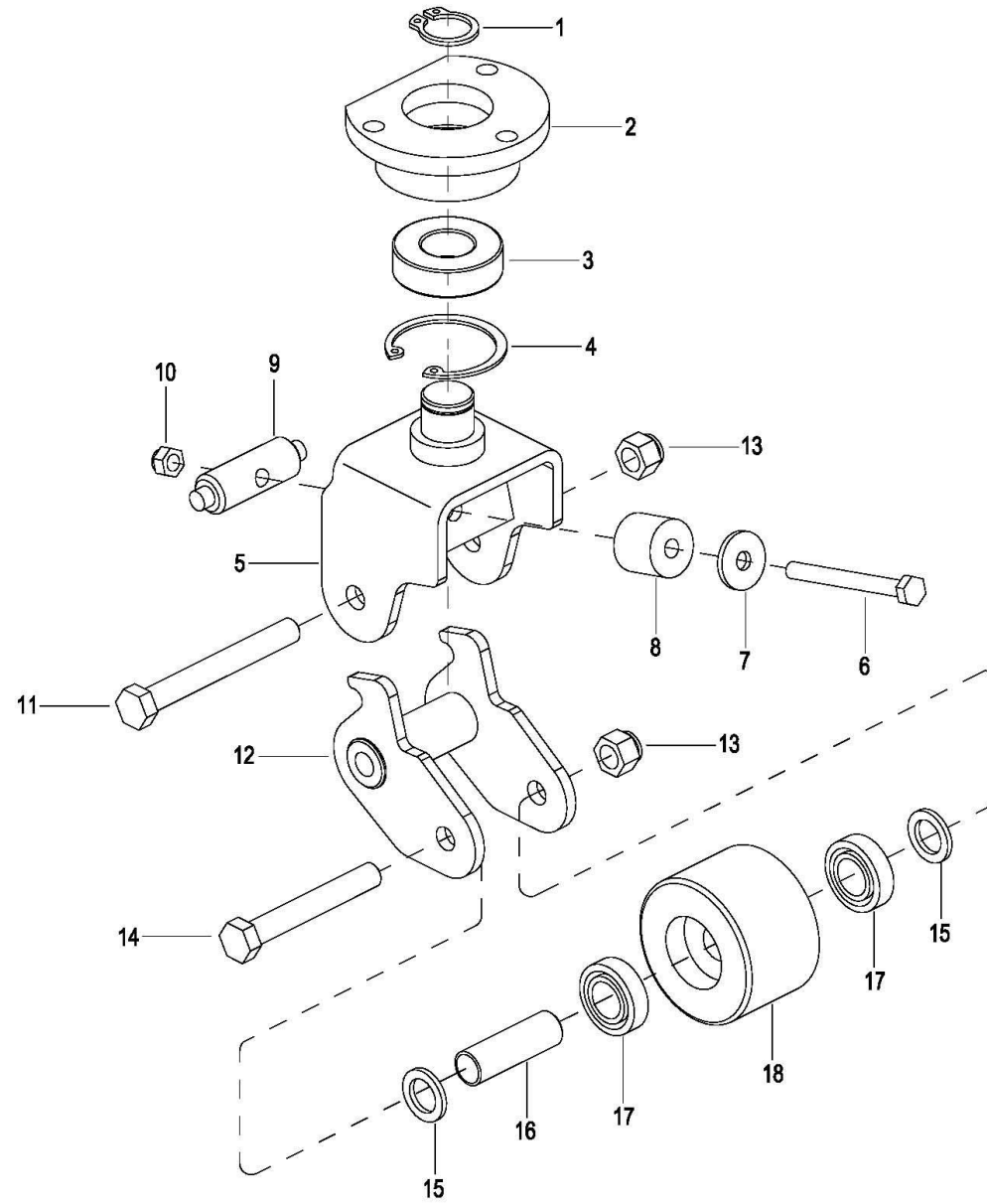
0106 Driving Cover Assembly

驱动外罩总成

Index 序号	Part No. 零件编号	Part Name 零件名称		No. 数量	Applied Date 试用日期	Remark 备注
1	1115-032000-A0	Caster Assembly	万向轮总成	2		See 0107
2	1116-141000-00	Cover	后围板焊件	1		
3	0000-000494-00	Screw M10×25	螺钉	12		
4	0000-000071-00	Flatwasherø10	平垫	12		
5	0000-000063-00	Lockwasherø10	弹垫	12		

0107 Caster Assembly

浮动万向轮总成



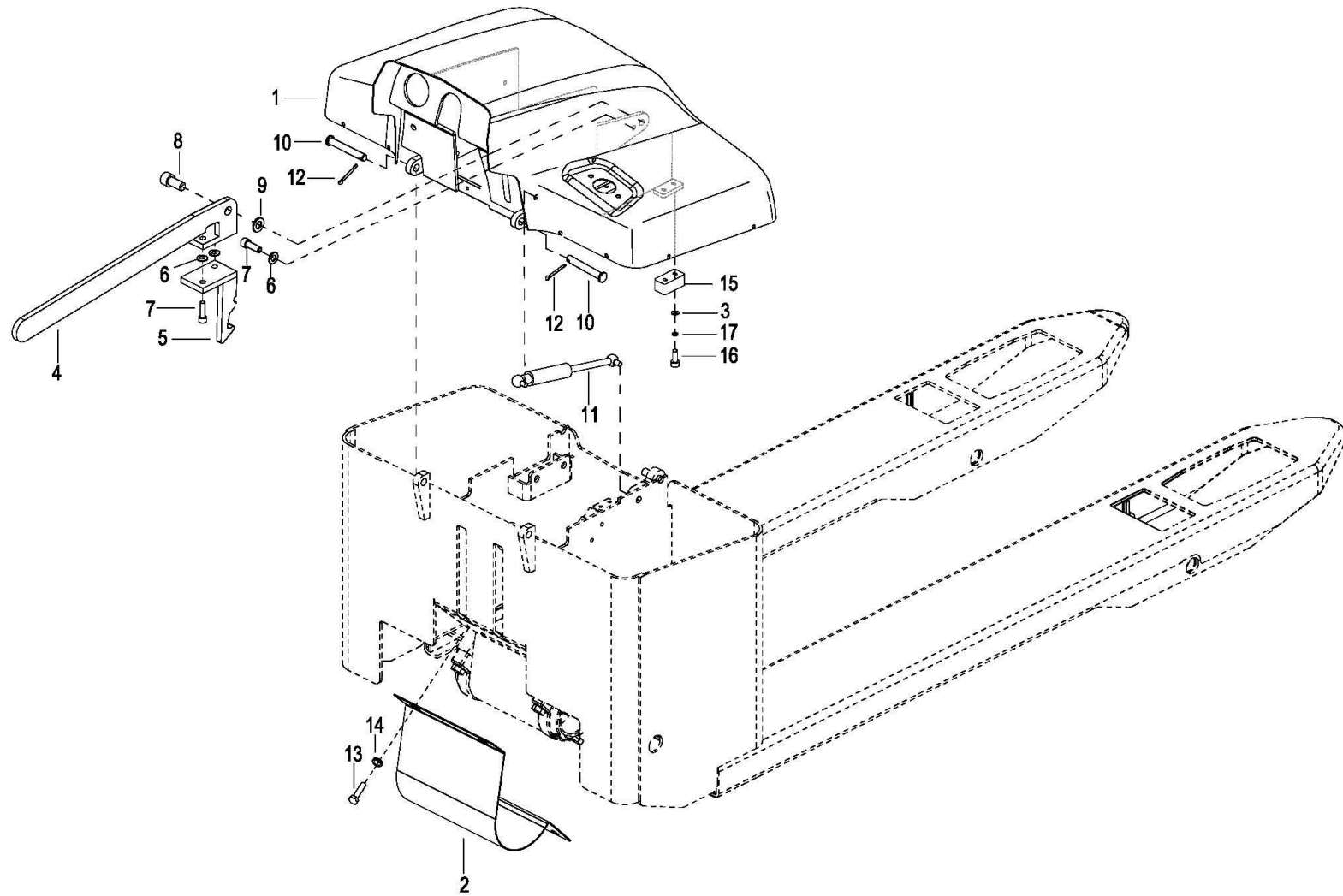
0107 Caster Assembly

浮动万向轮总成

Index 序号	Part No. 零件编号	Part Name 零件名称	No. 数量	Applied Date 试用日期	Remark 备注
0	1115-032000-A0	Caster Assembly 万向轮总成	1		Pos. 1-18
1	0000-000294-00	Retainer Ring ø25 轴用挡圈	1		
2	1115-032100-A0	Caster Support 轴承座	1		
3	0000-000100-00	Bearing 6205Z 轴承	1		
4	0000-000758-00	Elastic Collar Φ52 孔用挡圈	1		
5	1115-032300-A0	Caster Support 轮叉座	1		
6	0000-000281-00	Bolt M8×80 螺栓	1		
7	0000-000373-00	Flatwasherø12 平垫	1		
8	1115-032002-A0	Buffer Block 缓冲块	1		
9	1115-032001-A0	rod 拉杆	1		
10	0000-000740-00	Nut M8 螺母	1		
11	0000-001413-00	Bolt M12×100 螺栓	1		
12	1115-032200-A0	Wheel Bracket 轮支架	1		
13	0000-001334-00	Nut M12 螺母	2		
14	0000-000495-00	Bolt M12×85 螺栓	1		
15	0000-000435-00	Flatwasherø20 平垫	2		
16	1120-143001-00	Shaft 销轴	1		
17	01 0000-000020-00	Bearing 6204-2Z 轴承	2	-427171687	
	02 309000000004	Bearing6204-2RS 轴承	2	427171688-	EP20190104
18	1115-172101-h0	PU Wheel PU 万向轮	1		

0108 Cover Assembly

外罩总成



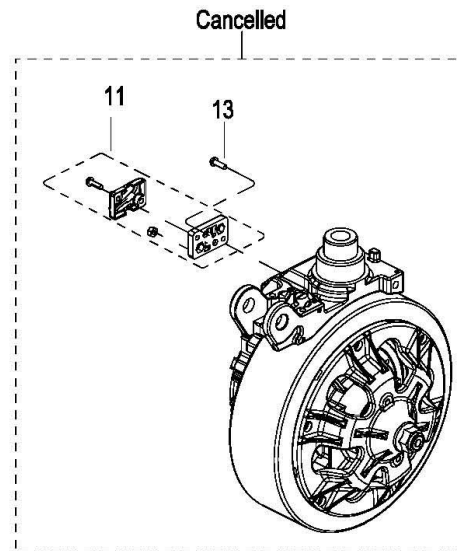
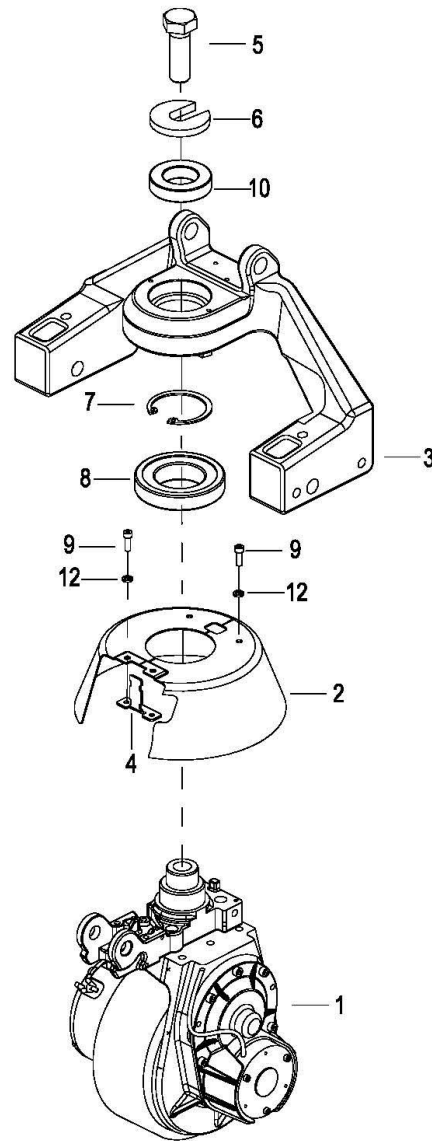
0108 Cover Assembly

外罩总成

Index 序号	Part No. 零件编号	Part Name 零件名称	No. 数量	Applied Date 试用日期	Remark 备注
1	1116-510000-00	Cover 面罩	1		
2	1116-140001-00	Down Link Cover 下连杆罩板	1		
3	0000-000991-00	Flatwasherø3 平垫	2	-4281803587	EP20191120-03
4	1116-512001-00	Lock handle 锁扣把手	1		
5	1116-512002-00	Lock 锁扣	1		
6	0000-000123-00	Flatwasherø6 平垫	3		
7	0000-000055-00	Screw M6×16 螺钉	3		
8	0000-001625-00	Bolt M8×25 螺栓	1		
9	0000-000210-00	Flatwasherø8 大平垫	Req.		
10	0000-001710-00	Pin Roll ø10×24 销轴	2		
11	1116-500009-00	Gas Spring 气弹簧	1		
12	0000-000188-00	Pin 3.2×20 开口销	2		
13	0000-000264-00	Bolt M6×12 螺栓	4		
14	0000-000122-00	Lockwasherø4 弹垫	4		
15	1115-600004-K0	Buffer Block 缓冲块	1	-4281803587	EP20191120-03
16	0000-001024-00	Screw M3×10 螺钉	2	-4281803587	EP20191120-03
17	0000-000995-00	Lockwasherø3 弹垫	2	-4281803587	EP20191120-03

2000
Driving System
驱动系统

0201 Driving System
驱动系统

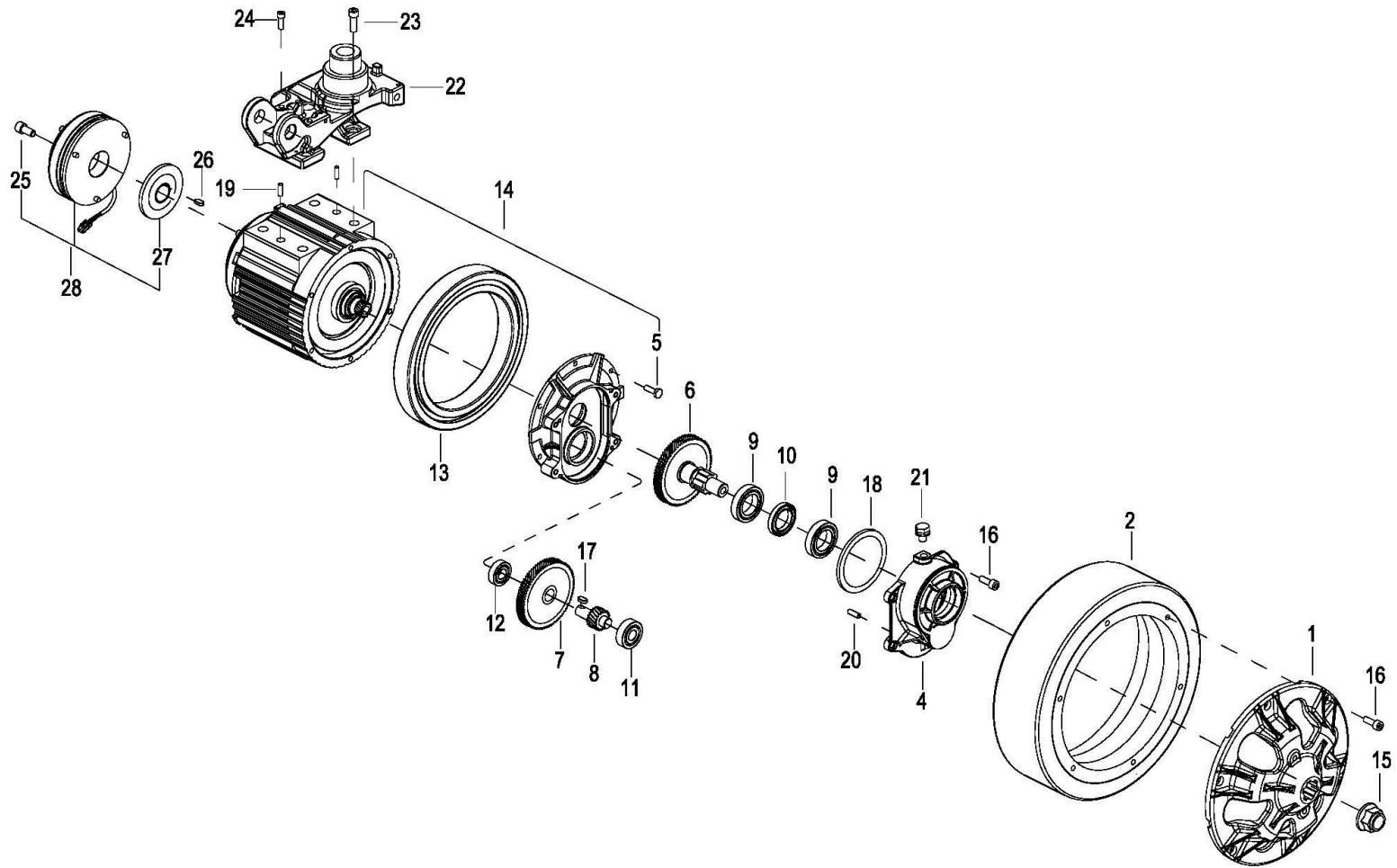


0201 Driving System

驱动系统

Index 序号	Part No. 零件编号	Part Name 零件名称		No. 数量	Applied Date 试用日期	Remark 备注
1	01	1116-200000-00	Driving Assembly	驱动单元总成	1	See 0202 , Superseded by ZL10-200000-F1
	02	ZL10-200000-F1	Driving Assembly	驱动单元总成	1	See 020201, EP20191025
2		1116-140002-00	Driving Rotating Cover	驱动旋转罩	1	
3		1116-130001-00	Load Bridge	承载桥	1	
4		1116-500001-00	Yarn Feeder	导线板	1	
5		1115-200011-00	Driving Lock Bolt	驱动锁紧螺栓	1	
6		1116-200001-00	Driving Lock Plate	驱动锁紧板	1	
7		0000-000762-00	Elastic Collar Φ62	孔用弹性挡圈	1	
8		0000-001712-00	Bearing30210	轴承	1	
9		0000-001029-00	Screw M4×12	螺钉	4	
10		0000-001445-00	Bearing6007	轴承	1	
11		1116-240000-00	Junction Box	接线盒组件	1	-4281803587
12		0000-000122-00	Lockwasherø4	弹垫	4	
13		0000-000485-00	Screw Screw M4×16	螺钉	2	-4281803587

0202 Driving Assembly
驱动单元总成



0202 Driving Assembly

驱动单元总成

Index 序号	Part No. 零件编号	Part Name 零件名称	No. 数量	Applied Date 试用日期	Remark 备注
0	1116-200000-00	Driving Assembly 驱动单元总成	1	-4281803587	Pos.1-25
1	1116-200009-00	Connecting Piece 驱动轮连接件	1	-4281803587	
2	1116-220000-00	Driving Wheel, PU 驱动轮	1	-4281803587	For EPT20-ET
2	1116-220000-A0	Driving Wheel, Rubber 橡胶驱动轮	1	-4281803587	For EPT16-ET
3	1116-210005-00	Front end Cap 前端盖	4	-4281803587	
4	1116-200008-00	Gear Cover 箱盖	1	-4281803587	
5	0000-001721-00	Blot M5×16 螺栓	6	-4281803587	
6	1116-200005-00	Helical Gear 二级大斜齿	1	-4281803587	
7	1116-200003-00	Helical Gear 一级大斜齿	1	-4281803587	
8	1116-200004-00	Helical Gear 二级小斜齿	1	-4281803587	
9	0000-000667-00	Bearing61905 轴承	2	-4281803587	
10	0000-001715-00	Seal Washer TC 38×25×6 油封	1	-4281803587	
11	0000-001255-00	Bearing6201 轴承	1	-4281803587	
12	0000-000461-00	Bearing61904 轴承	1	-4281803587	
13	0000-001711-00	Bearing61928 轴承	1	-4281803587	
14	1116-210000-00	Driving Motor Assembly 驱动电机总成	1	-4281803587	
15	0000-001717-00	Bolt M16×1.5 螺母	1	-4281803587	
16	0000-000055-00	Screw M6×16 螺钉	10	-4281803587	
17	0000-001716-00	Flat Key5×5×9 A型平键	1	-4281803587	
18	1116-200007-00	Sealing Ring Φ80×1.8 密封圈	1	-4281803587	
19	0000-001714-00	Round Pin ø8×18 圆柱销	2	-4281803587	
20	0000-001718-00	Round Pin ø4×8 圆柱销	2	-4281803587	
21	1120-240011-30	Gas Plug 透气帽	1	-4281803587	
22	1116-200002-00	Drive seat 驱动座	1	-4281803587	

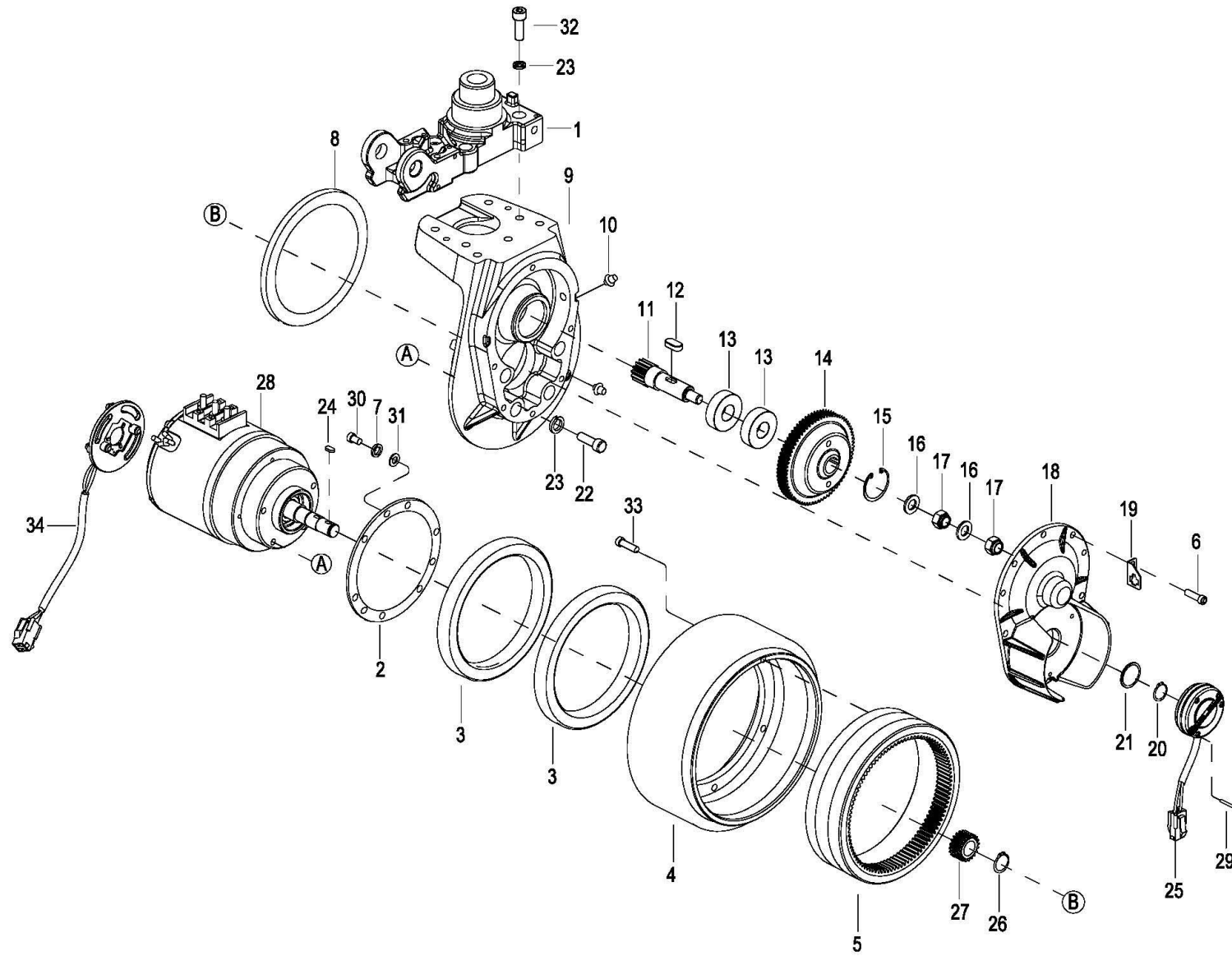
0202 Driving Assembly

驱动单元总成

Index 序号	Part No. 零件编号	Part Name 零件名称	No. 数量	Applied Date 试用日期	Remark 备注
23	0000-000070-00	Screw M10×25 螺钉	4	-4281803587	
24	0000-000077-00	ScrewM6×12 螺钉	2	-4281803587	
25	0000-000121-00	Screw M4×35 螺钉	3	-4281803587	
26	0000-000662-00	Flat Key5×5×12 A 型平键	1	-4281803587	
27	1116-230001-00	Brake Lining 刹车片	1	-4281803587	
28	1116-230000-00	Brakes 制动器	1	-4281803587	

020201 Driving Assembly

驱动单元总成



020201 Driving Assembly

驱动单元总成

Index 序号	Part No. 零件编号	Part Name 零件名称		No. 数量	Applied Date 试用日期	Remark 备注
1	1116-210011-00	Spindle Head	轴头	1	4281803588-	
2	ZL10-200007-00	Bearing Baffle	轴承挡板	1	4281803588-	
3	309001000011	Bearing 61824	轴承	2	4281803588-	
4	ZL10-210000-A0	Driving Wheel	驱动轮	1	4281803588-	
5	ZL10-200004-00	Inner Gear Ring	内齿圈	1	4281803588-	
6	0000-000055-00	Screw M6×16	螺钉	6	4281803588-	
7	0000-000056-00	Lockwasher ø6	弹垫	3	4281803588-	
8	0000-000670-00	Seal Ringø155×172×10	密封圈	1	4281803588-	
9	ZL10-200005-F0	Gear Case	箱体	1	4281803588-	
10	0000-000013-00	Grease Fitting M8×1×10	直通式压注油杯	2	4281803588-	
11	ZL10-200003-00	Small Straight Teeth	小直齿	1	4281803588-	
12	0000-001020-00	Key 5×5×16	平键	1	4281803588-	
13	309001000042	Bearing 6203RS	轴承	2	4281803588-	
14	ZL10-200001-00	Large Helical Teeth	大斜齿	1	4281803588-	
15	305002000023	Circlips For Holes ø40	孔用挡圈	1	4281803588-	
16	0000-000071-00	Flatwasher ø10	平垫	1	4281803588-	
17	0000-000425-00	NutsM10	六角薄螺母	1	4281803588-	
18	ZL10-200006-A0	Gear Cover	箱盖	1	4281803588-	
19	1115-200020-00	Plate	接插件固定板	1	4281803588-	
20	0000-000659-00	Circlips for shaft ø15	轴用弹性挡圈	1	4281803588-	
21	0000-000671-00	ø16×28×7	密封圈	1	4281803588-	
22	0000-000026-00	Screw M8×30	螺钉	4	4281803588-	
23	0000-000159-00	Lockwasher ø8	弹垫	10	4281803588-	
24	0000-001021-00	Key 5×5×10	平键	1	4281803588-	

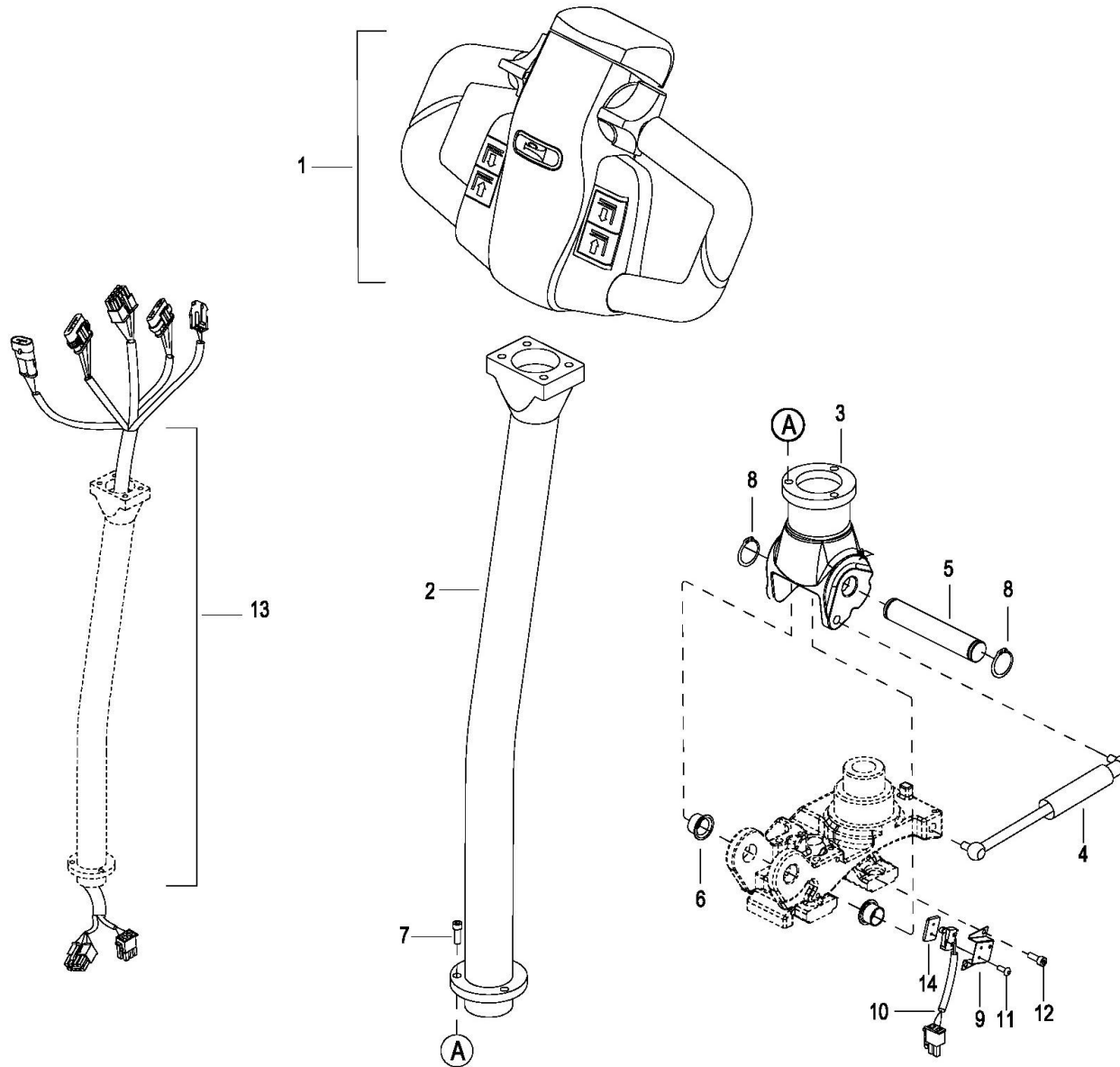
25	ZL10-520012-00	Brake Assembly	制动器总成	1	4281803588-	
26	ZL10-200002-00	Small Helical Teeth	小斜齿	1	4281803588-	
27	0000-000659-00	Circlips for shaft ø15	轴用弹性挡圈	1	4281803588-	
28	ZL10-220000-30	Motor	电机	1	4281803588-	Including #34
29	0000-000665-00	Screw M4×45	螺钉	3	4281803588-	
30	0000-000015-00	Screw M6×10	螺钉	3	4281803588-	
31	0000-000380-00	Flatwasher ø6	平垫	3	4281803588-	
32	302002000014	Screw M8x25	螺钉	4	4281803588-	
33	1115-200022-D0	Screw	改制螺钉	6	4281803588-	
34	ZL10-22001X-30	Encoder	编码器	1	4281803588-	

3000

Operating Control System

操作系统

0301 Operating Control System
操作系统



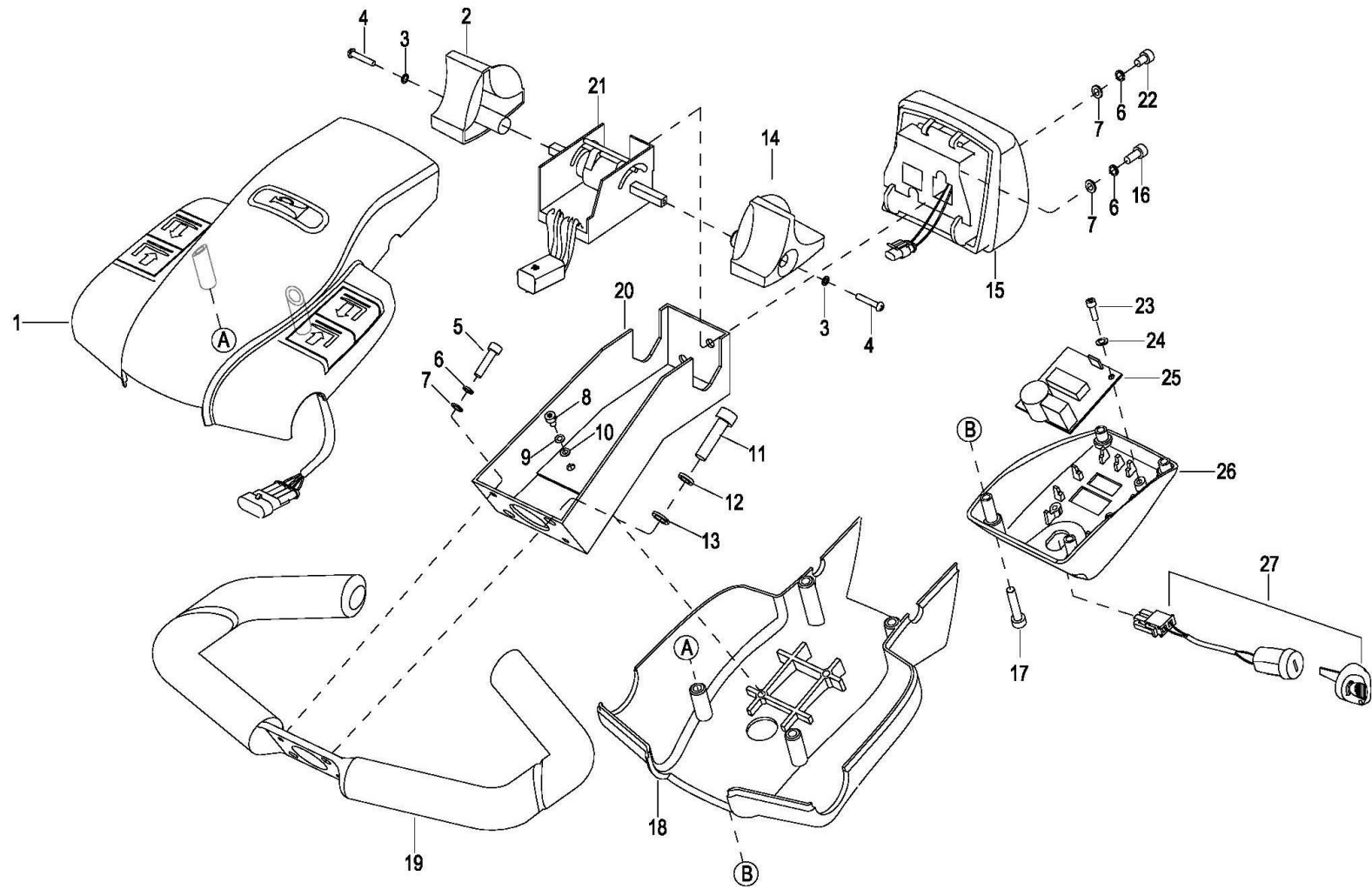
0301 Operating Control System

操作系统

Index 序号		Part No. 零件编号	Part Name 零件名称		No. 数量	Applied Date 适用日期	Remark 备注
1	01	1116-340000-00	Control Pod Assembly	手柄头总成	1	-427110130	See 0302, With Wire, Superseded by 1115-340000-10-50
	02	1115-340000-10-50	Control Pod Assembly	手柄头总成	1	427110131-	See 030201, With Wire
2		1116-320000-00	Control Handle	手柄管	1		
3	01	1116-300003-00	Joint Seat	关节座	1		Superseded by 1116-300003-0C
	02	1116-300003-0C	Joint Seat	关节座	1		EP20191025
4		1116-310000-00	Gas Spring	手柄气弹簧	1		
5	01	1116-300001-00	Shaft	关节轴	1	-4281001935	
	02	1116-300001-0A	Shaft	关节轴	1	4281001936-	EP20190305
6		0000-001327-00	Bushing 1612 F	自润滑轴套	2		
7		0000-000055-00	Screw M6×16	螺钉	3		
8	01	0000-000112-00	Snap Ring Φ14	轴用挡圈	2	-4281001935	
	02	0000-000589-00	Snap Ring Φ16	轴用挡圈	2	4281001936-	EP20190305
9		1116-300002-00	Spacer	互锁开关安装板	1		
10		1115-520009-0A	Inching Switch	互锁开关	1		
11		0000-001348-00	Screw M2×10	螺钉	2		
12		0000-000088-00	Screw M4×8	螺钉	2		
13		1116-520003-00	Wire Harness	弯管线束	1		
14		1116-300004-00	Inching Plate	互锁底板	1		

0302 Control Pod Assembly

手柄头总成



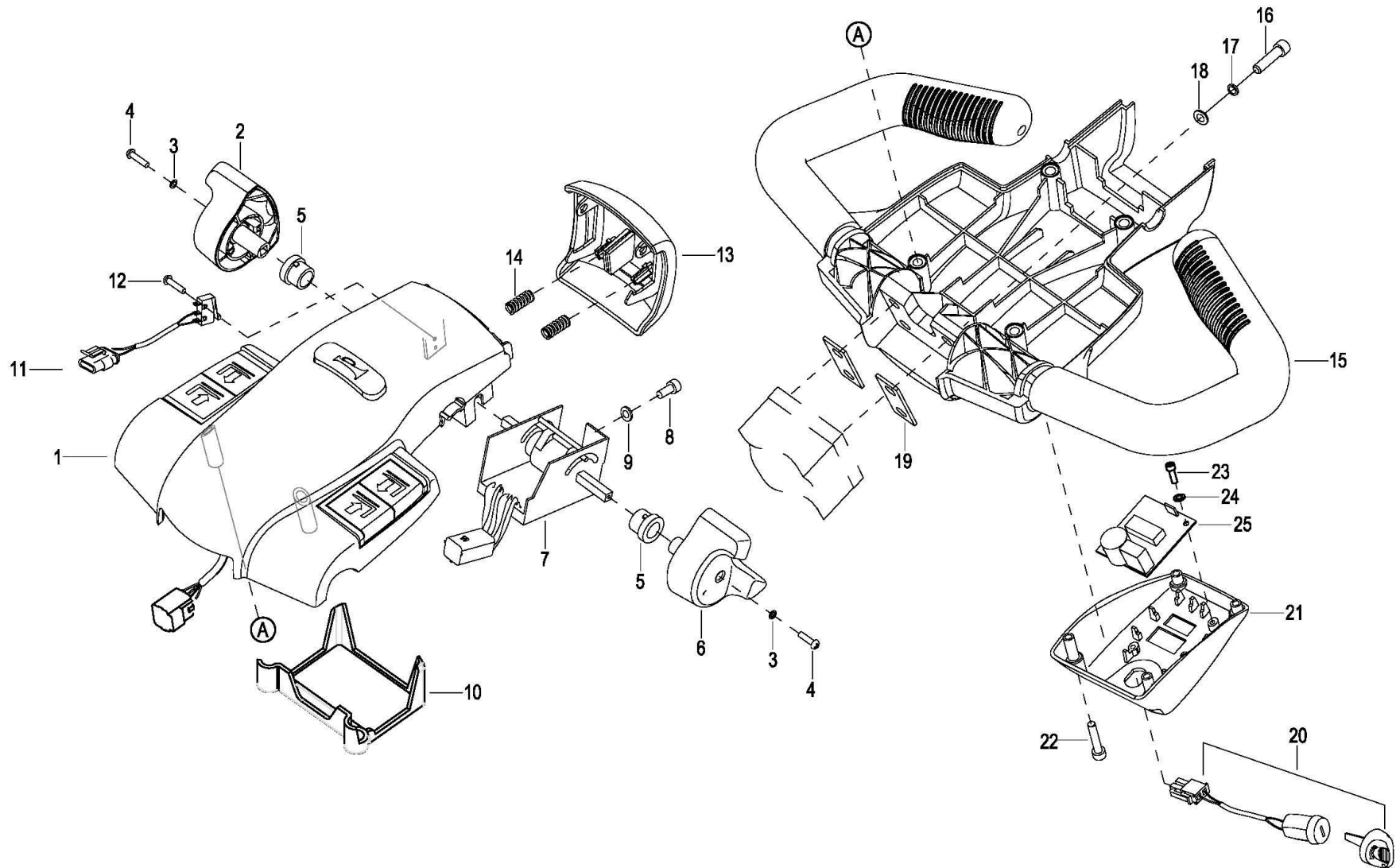
0302 Control Pod Assembly

手柄头总成

Index 序号	Part No. 零件编号	Part Name 零件名称	No. 数量	Applied Date 试用日期	Remark 备注
0	1116-340000-00	Control Pod Assembly 手柄头总成	1	-427110130	Pos.1-27, With Wire
1	1120-342000-00-B	Upper Cover Assembly 上盖总成	1	-427110130	With Wire, See 0303
2	1120-340005-00	Travelling Knob R 旋钮右	1	-427110130	
3	0000-000038-00	Lockwasher ø3 弹垫	2	-427110130	
4	0000-000037-00	Screw M3×12 螺钉	2	-427110130	
5	0000-000004-00	Screw M5×12 螺钉	2	-427110130	
6	0000-000206-00	Lockwasher ø5 弹垫	4	-427110130	
7	0000-000390-00	Flatwasherø5 平垫	4	-427110130	
8	0000-000088-00	Screw M4×8 螺钉	2	-427110130	
9	0000-000122-00	Lockwasherø4 弹垫	2	-427110130	
10	0000-000702-00	Flatwasher ø4 平垫	2	-427110130	
11	0000-000322-00	Screw M8×25 螺钉	2	-427110130	
12	0000-000159-00	Lockwasher ø8 弹垫	2	-427110130	
13	0000-000176-00	Flatwasher ø8 平垫	2	-427110130	
14	1120-340003-00	Travelling Knob L 旋钮左	1	-427110130	
15	1120-343000-00-B	Button Reverser Assembly 紧急反向开关总成	1	-427110130	With Wire, See 0304
16	0000-000004-00	Screw M5×12 螺钉	1	-427110130	
17	0000-001322-00	Screw M5×50 螺钉	4	-427110130	
18	1114-310002-00	Cover 下盖	1	-427110130	
19	1120-341000-00	Gripe 弯管	1	-427110130	
20	1120-340001-00	Pod 连接件	1	-427110130	
21	1220-520008-0C	Accelerator 加速器	1	-427110130	
22	0000-000010-00	Screw M5×6 螺钉	1	-427110130	
23	0000-000666-00	Screw M3×8 螺钉	2	-427110130	
24	0000-000991-00	Flatwasher ø3 平垫	2	-427110130	
25	1116-500007-00	Power Module 电量模块	1	-427110130	
26	1114-310001-00	Bottom Cover 手柄底罩	1	-427110130	
27	1115-520019-0A	2-WayKeySwitch Assembly 钥匙开关总成	1	-427110130	

030201 Control Pod Assembly

手柄头总成

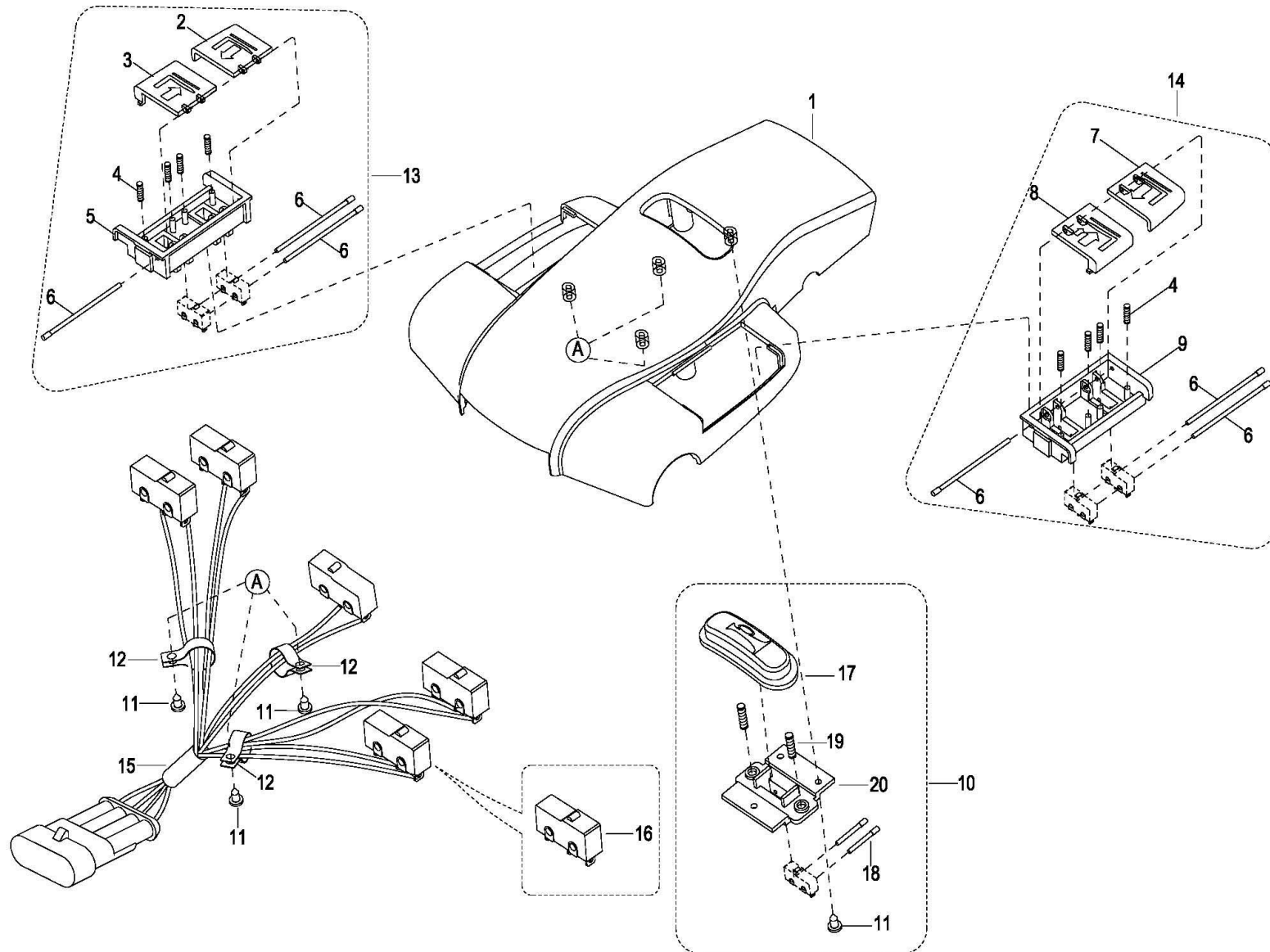


030201 Control Pod Assembly

手柄头总成

Index 序号	Part No. 零件编号	Part Name 零件名称	No. 数量	Applied Date 试用日期	Remark 备注
1	1115-341000-00-10	Cap Assembly See 030301 上盖总成(带线束)	1	427110131-	With Wire
2	1115-340005-00	Travelling Knob R 旋钮右	1	427110131-	
3	0000-000038-00	Lockwasher ø3 弹垫	2	427110131-	
4	0000-000037-00	Screw M3×12 螺钉	2	427110131-	
5	1115-340006-00	Seat 手柄旋钮旋转座	2	427110131-	Cancelled, EP20191112
6	1115-340004-00	Travelling Knob L 旋钮左	1	427110131-	
7	01 1220-520008-0C	Accelerator 加速器	1	427110131-	Superseded by 2YL012250882
	02 2YL012250882	Accelerator 加速器	1	427110131-	EP20200418-02
8	0000-000323-00	Screw M5×16 螺钉	1	427110131-	
9	0000-000390-00	Flatwasher ø5 平垫	1	427110131-	
10	1115-340007-00	Wire Harness Cover 手柄线束盒	1	427110131-	
11	1120-520009-00	Reversing Switch Wire 反向开关线束	1	427110131-	
12	0000-000989-00	Screw M2×12 螺钉	2	427110131-	
13	1115-340003-00	Cover 紧急反向开关盖	1	427110131-	
14	1121-310004-00	Spring 弹簧	2	427110131-	
15	1115-340002-10	Cover 手柄头把手	1	427110131-	
16	0000-000322-00	Screw M8×25 螺钉	4	427110131-	
17	0000-000159-00	Lockwasher ø8 弹垫	4	427110131-	
18	0000-000176-00	Flatwasher ø8 平垫	4	427110131-	
19	1115-340001-00	Washer 连体垫片	2	427110131-	
20	1115-520019-0A	2-Way Key Switch Assembly 钥匙开关总成	1	427110131-	
21	1114-310001-00	Bottom Cover 手柄底罩	1	427110131-	
22	0000-001322-00	Screw M5×50 螺钉	4	427110131-	
23	0000-000666-00	Screw M3×8 螺钉	2	427110131-	
24	0000-000991-00	Flatwasher ø3 平垫	2	427110131-	
25	1116-500007-00	Power Module 电量模块	1	427110131-	

0303 Upper Cover Assembly
上盖总成



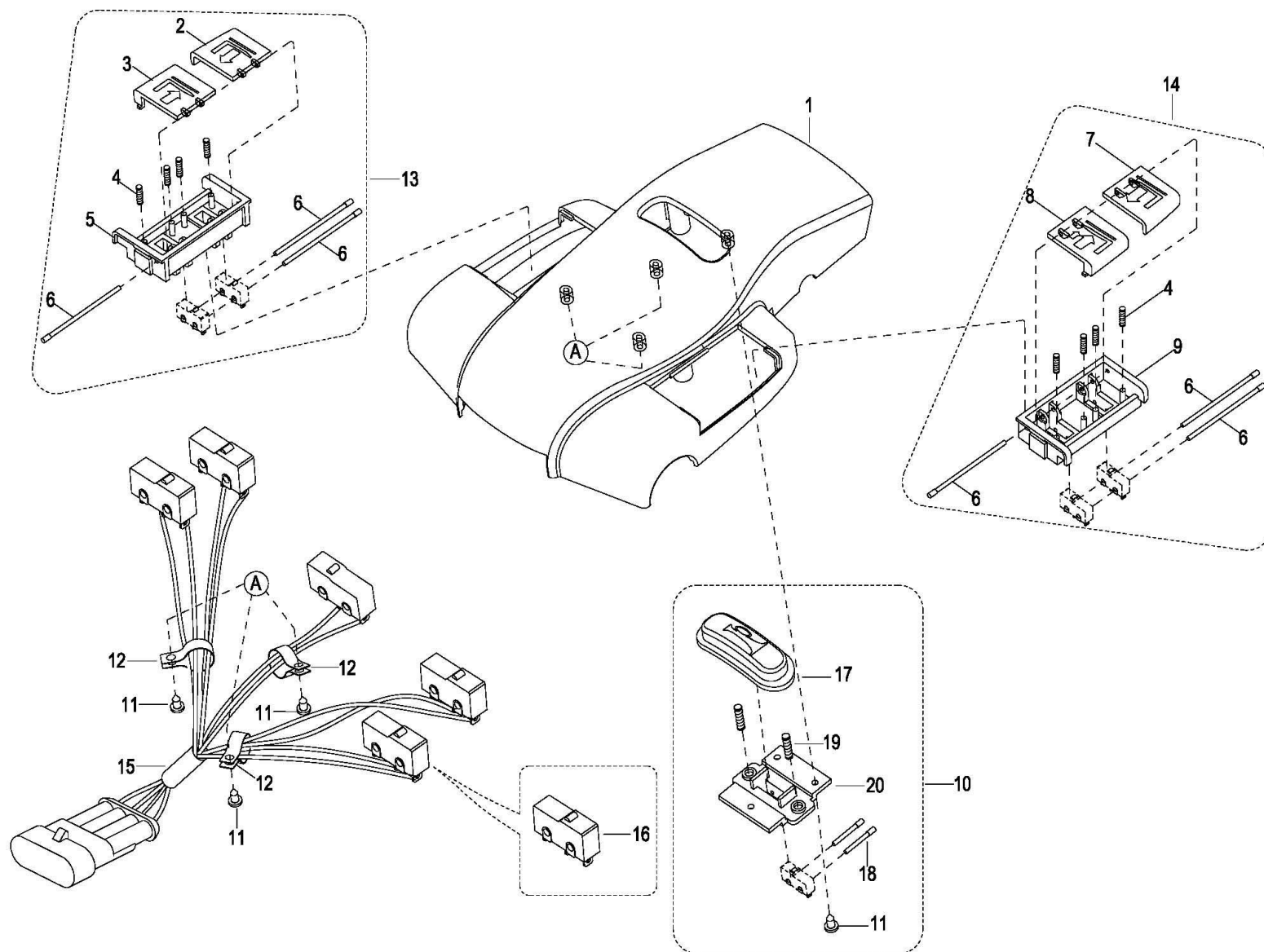
0303 Upper Cover Assembly

上盖总成

Index 序号	Part No. 零件编号	Part Name 零件名称	No. 数量	Applied Date 试用日期	Remark 备注
0	1120-342000-00-B	Upper Cover Assembly 上盖总成	1	-427110130	Pos.1-20
1	1120-342001-00	Upper Cover 上盖	1	-427110130	
2	1120-342203-00	Button For Lifting(R) 起升按钮右	1	-427110130	
3	1120-342202-00	Button For Lowering(R) 下降按钮右	1	-427110130	
4	1120-342102-00	Spring 弹簧	8	-427110130	
5	1120-342201-00	Button Bracket(R) 开关座右	1	-427110130	
6	1120-342105-00	Pin 销轴	6	-427110130	
7	1120-342104-00	Button For Lifting(L) 起升按钮左	1	-427110130	
8	1120-342103-00	Button For Lowering(L) 下降按钮左	1	-427110130	
9	1120-342101-00	Button Bracket (L) 开关座左	1	-427110130	
10	1120-342300-00	Horn Button Assembly 喇叭开关盒总成	1	-427110130	Pos.11,17-20
11	0000-000039-00	Screw ST3.5×9.5 螺钉	6	-427110130	
12	0000-000490-00	Line Clamp 线夹	3	-427110130	
13	1120-342200-00	Lift And Lower Box(R) Assembly 右升降开关盒总成	1	-427110130	Pos.2-6
14	1120-342100-00	Lift And Lower Box(L) Assembly 左升降开关盒总成	1	-427110130	Pos.4,6-9
15	1220-520006-0C	Buttons Asseby 提升、下降、喇叭 按钮线束	1	-427110130	
16	1220-560002-00	Inching Switch II 微动开关 II	5	-427110130	
17	1120-342002-00	Horn Button 喇叭按钮	1	-427110130	
18	1120-342005-00	Pin 销轴	2	-427110130	
19	1120-342003-00	Spring 弹簧	2	-427110130	
20	1120-342004-00	Button Bracket 喇叭开关支架	1	-427110130	

030301 Upper Cover Assembly

上盖总成

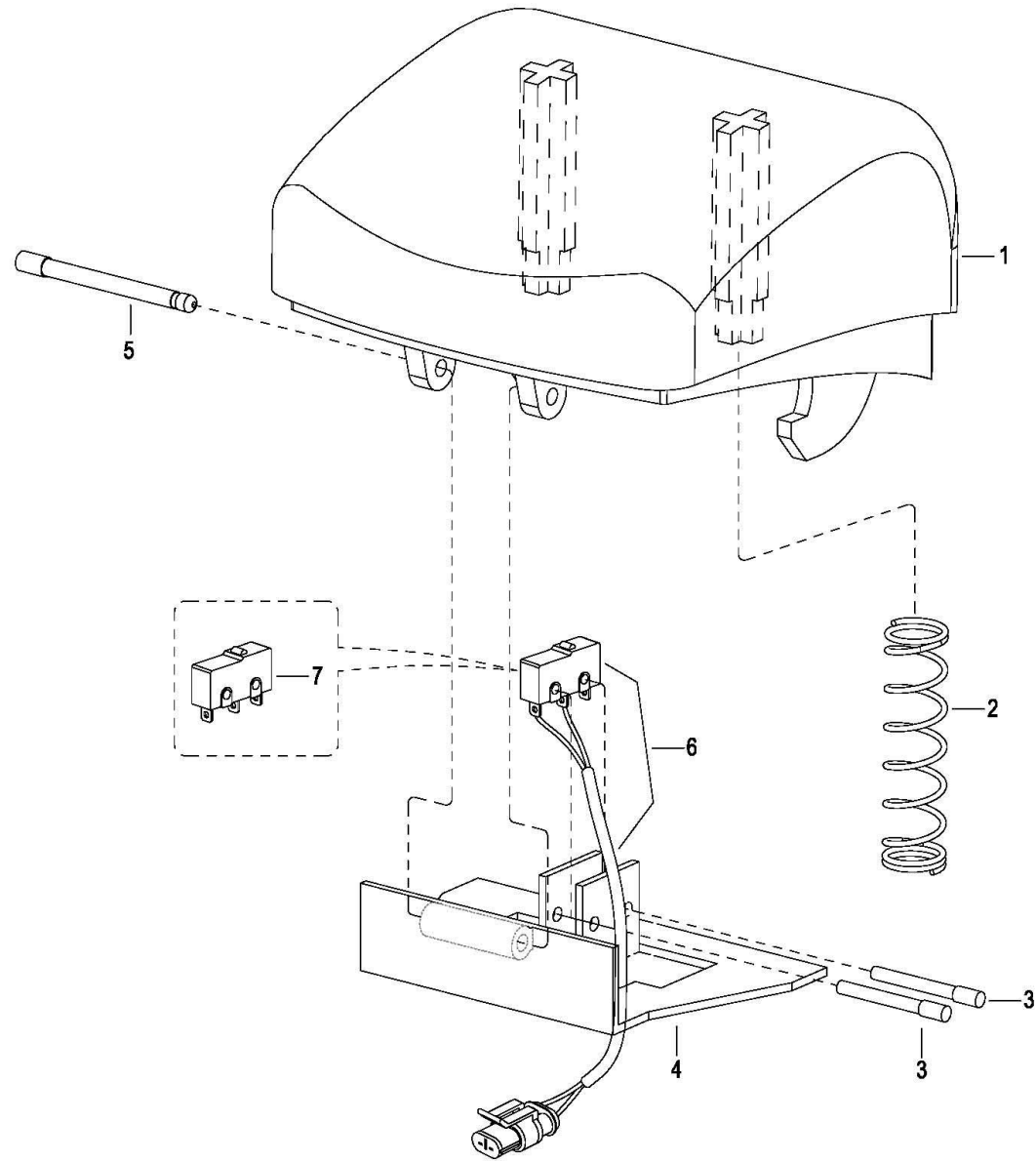


030301 Upper Cover Assembly

上盖总成

Index 序号	Part No. 零件编号	Part Name 零件名称		No. 数量	Applied Date 试用日期	Remark 备注
1	1115-341001-00	Upper Cover	手柄头上盖	1	427110131-	
2	1120-342203-00	Button For Lifting(R)	起升按钮右	1	427110131-	
3	1120-342202-00	Button For Lowering(R)	下降按钮右	1	427110131-	
4	1120-342102-00	Spring	弹簧	8	427110131-	
5	1120-342201-00	Button Bracket(R)	开关座右	1	427110131-	
6	1120-342105-00	Pin	销轴	6	427110131-	
7	1120-342104-00	Button For Lifting(L)	起升按钮左	1	427110131-	
8	1120-342103-00	Button For Lowering(L)	下降按钮左	1	427110131-	
9	1120-342101-00	Button Bracket (L)	开关座左	1	427110131-	
10	1120-342300-00	Horn Button Assembly	喇叭开关盒总成	1	427110131-	
11	0000-000039-00	Screw ST3.5×9.5	螺钉	6	427110131-	
12	0000-000490-00	Harness Clamp	线夹	3	427110131-	
13	1120-342200-00	Lift And Lower Box(R) Assembly	右升降开关盒总成	1	427110131-	
14	1120-342100-00	Lift And Lower Box(L) Assembly	左升降开关盒总成	1	427110131-	
15	1220-520006-0C	Buttons Assembly	提升、下降、喇叭按钮 总成	1	427110131-	
16	1220-560002-00	Inching Switch II	微动开关 II	5	427110131-	
17	1120-342002-00	Horn Button	喇叭按钮	1	427110131-	
18	1120-342005-00	Pin	销轴	2	427110131-	
19	1120-342003-00	Spring	弹簧	2	427110131-	
20	1120-342004-00	Button Bracket	喇叭开关支架	1	427110131-	

0304 Button Reverser Assembly
紧急反向开关总成



0304 Button Reverser Assembly

紧急反向开关总成

Index 序号	Part No. 零件编号	Part Name 零件名称	No. 数量	Applied Date 试用日期	Remark 备注
0	1120-343000-00-B	Button Reverser Assembly 紧急反向开关总成	1	-427110130	Pos.1-7
1	1120-343002-00	Cover 紧急反向开关盖	1	-427110130	
2	1120-343003-00	Spring 弹簧	2	-427110130	
3	1120-342005-00	Pin 销轴	2	-427110130	
4	1120-343001-0A	Bracket 紧急反向开关板	1	-427110130	
5	1120-343004-00	Pin 销	1	-427110130	
6	1220-520005-0C	Reversing Switch Wire 反向开关线束	1	-427110130	
7	1220-560002-00	Inching Switch II 微动开关 II	1	-427110130	

4000

Hydraulic System

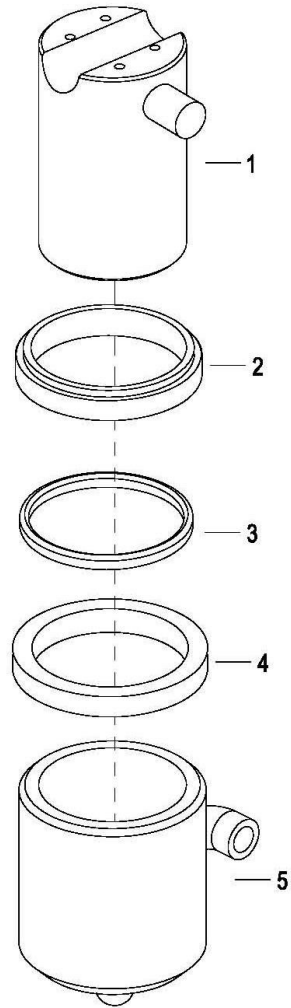
液压系统

0401 Hydraulic System

液压总成

Index 序号	Part No. 零件编号	Part Name 零件名称	No. 数量	Applied Date 试用日期	Remark 备注
1	1116-430000-00	Pump and Motor Assembly 液压站总成	1		See 0404
2	1116-400002-00	Bushing 薄壁轴瓦	1		
3	1116-410000-00-10	Cylinder Assembly 起升油缸总成	1		For EPT20-ET, See 0402
3	1116-410000-00-20	Cylinder Assembly 起升油缸总成	1		For EPT16-ET ,See 0403
4	1116-420000-00	Hose 油管组件	1		
5	1116-400001-00	Connecting Plate 油缸连接板	1		
6	0000-000433-00	ScrewM8×12 螺钉	2		
7	0000-000004-00	ScrewM5×12 螺钉	4		
8	0000-000044-00	Washerø14 组合垫圈	2		
9	2401-143500-00	BoltM14×35 铰接头螺栓	1		
10	0000-000159-00	Lockwasherø8 弹垫	2		
11	0000-000206-00	Lockwasherø5 弹垫	2		
12	0000-000128-00	Flatwasherø5 平垫	2		

0402 Lifting Cylinder, For EPT-20ET
起升油缸



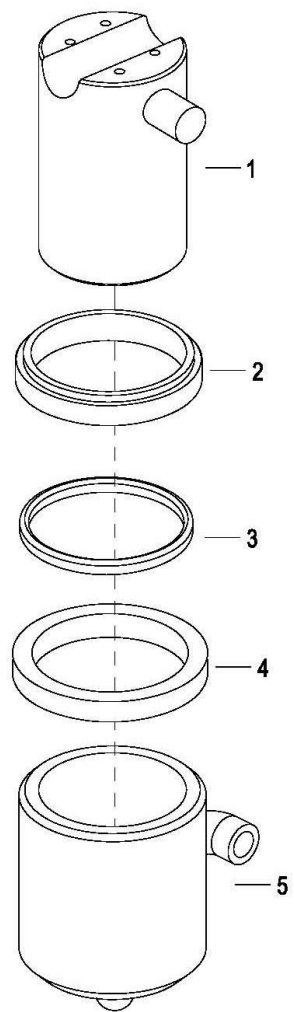
0402Lifting Cylinder, For EPT-20ET

起升油缸

Index 序号	Part No. 零件编号	Part Name 零件名称		No. 数量	Applied Date 试用日期	Remark 备注
0	1116-410000-00-10	Cylinder Assembly	起升油缸总成	1		Pos.1-5, For EPT20-ET
1	1116-411000-00-10	Piston Rod	活塞杆	1		
2	0000-001719-00	Ring Wiper 75×85×6/8	防尘圈	1		
3	0000-000967-00	O-ring 80×3.1	O 型圈	1		
4	0000-001720-00	Rod Packing 75×85×6	轴用密封圈	1		
5	1116-412000-00	Cylinder	缸体	1		
KIT	1116-ZZG-0A	Seal Kit For Lifting Cylinder(Includes2、3、4)	起升油缸修理包 (包 含 2、3、4)	1		

0403 Lifting Cylinder, For EPT-16ET

起升油缸



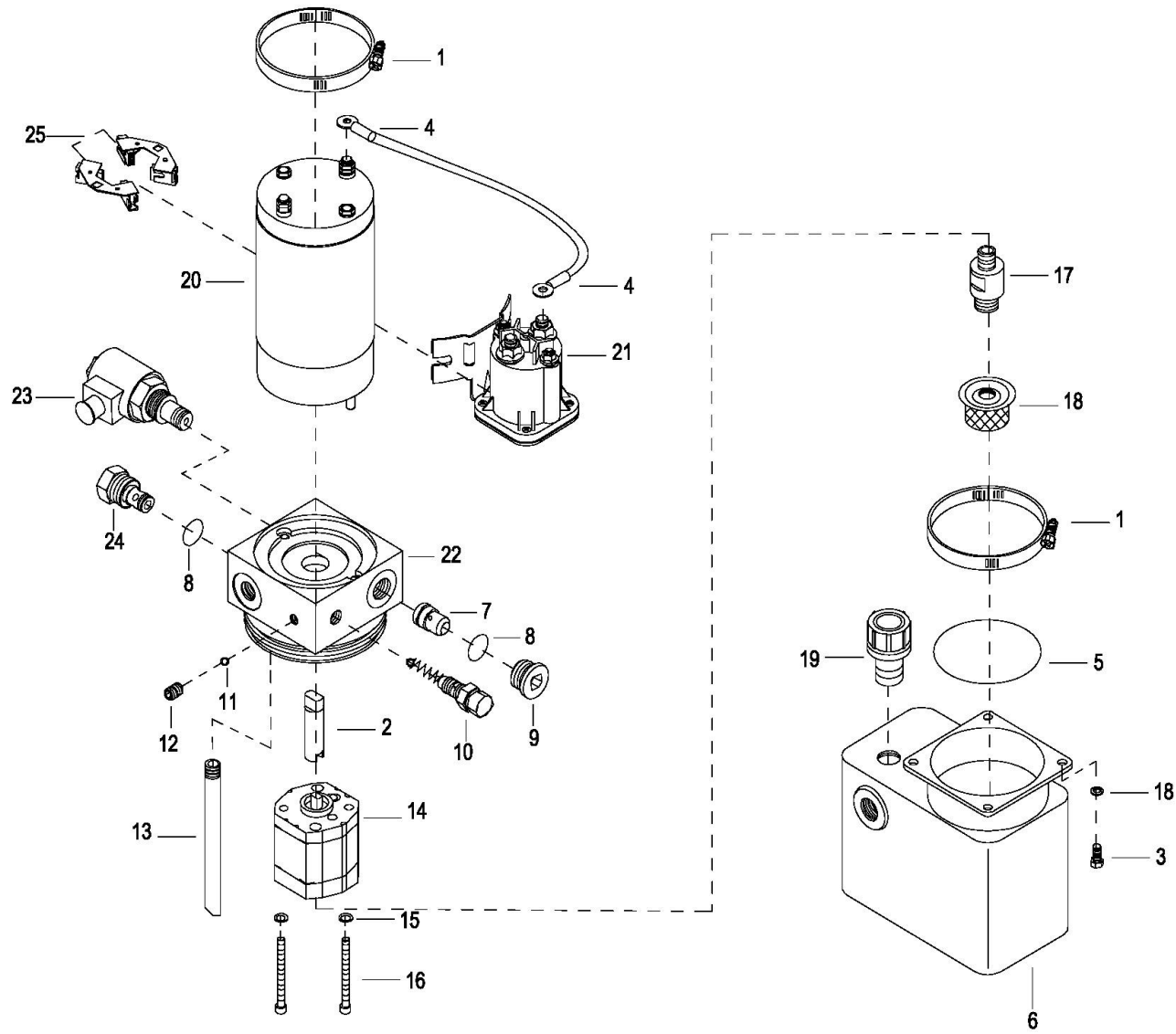
0403 Lifting Cylinder, For EPT-16ET

起升油缸

Index 序号	Part No. 零件编号	Part Name 零件名称		No. 数量	Applied Date 试用日期	Remark 备注
0	1116-410000-00-20	Cylinder Assembly	起升油缸总成	1		Pos.1-5, For EPT16-ET
1	1116-411000-00-20	Piston Rod	活塞杆	1		
2	0000-001719-00	Ring Wiper 75×85×6/8	防尘圈	1		
3	0000-000967-00	O-ring 80×3.1	O型圈	1		
4	0000-001720-00	Rod Packing 75×85×6	轴用密封圈	1		
5	1116-412000-00	Cylinder	缸体	1		
KIT	1116-ZZG-0A	Seal Kit For Lifting Cylinder(Includes2、3、4)	起升油缸修理包(包 含2、3、4)	1		

0404 Pump & Motor Assembly

液压站总成



0404 Pump & Motor Assembly

液压站总成

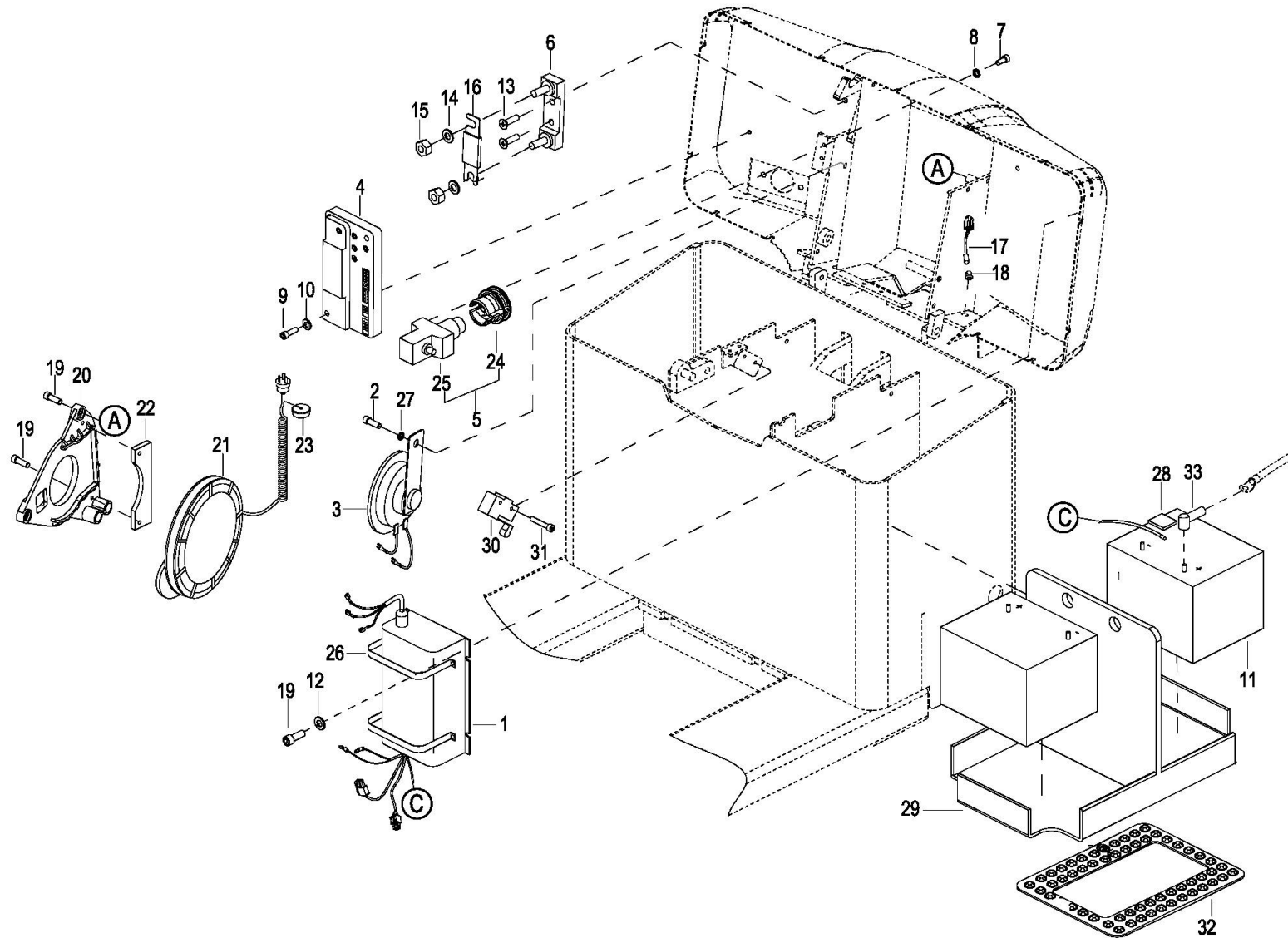
Index 序号	Part No. 零件编号	Part Name 零件名称	No. 数量	Applied Date 试用日期	Remark 备注
0	1116-430000-00	Pump and Motor 液压站总成	1		Pos.1-24
1	1115-560001-00	Hoop d80 喉箍	2		
2	1116-430013-00	Connecting Shaft 连接轴	1		
3	1116-430001-00	Screw M5x10 螺钉	4		Cancelled
3	2320-470017-00	Screw M5x10 螺钉	4		
4	01 1116-430002-00	Wire Harness (I) 线束 (I)	1		Superseded by 1118-420002-00
	02 1118-420002-00	Wire Harness (I) 线束 (I)	1		
5	1116-430003-00	O-Ring 53 x 3.55 O 形圈	1		
6	1116-430004-00	Oil Tank 油箱	1		
7	1115-560005-00	Throttle Valve 节流阀	1		
8	1115-560025-00	O-Ring ø16.36x2.21 O 形圈	2		
9	1115-560026-00	Screw 内六角螺塞	1		
10	1115-560006-00	Safety Valve 安全阀	1		
11	1115-560007-00	Ball 6G20b 钢球	1		
12	01 1116-430005-00	Screw M8x8 螺钉	1		Superseded by 1115-560008-00
	02 1115-560008-00	Screw M8x8 螺钉	1		
13	1115-560009-00	Return Pipe 回油管	1		
14	1115-560011-00	Gear Pumps 齿轮泵	1		
15	01 1116-430006-00	Washer ø5 平垫圈	6		Superseded by 1115-560012-00
	02 1115-560012-00	Washer ø5 平垫圈	6		
16	1115-560013-00	Screw M5x70 螺钉	2		
17	01 1116-430007-00	Suction Pipe 吸油管	1		Superseded by 1219-430001-00
	02 1219-430001-00	Suction Pipe 吸油管	1		
18	1115-560015-00	Oil Filter 滤油器 (G3/8)	1		
19	1115-560024-00	Air Filter 空滤器 (G3/8)	1		
20	1116-430008-00	DC Motor 直流电机	1		Including item 25

Index 序号	Part No. 零件编号	Part Name 零件名称		No. 数量	Applied Date 试用日期	Remark 备注
21	1116-430009-00	Relay	电磁式接触器	1		
22	1116-430010-00	Valve Plate	连接阀板	1		
23	1116-430011-00	Solenoid Valve	电磁插装阀	1		
24	1116-430012-00	Check Valve	单向阀	1		
25	1115-561001-00	Carbon Brush	碳刷	2		

5000
Electrical System
电气系统

0501 Setting Board Assembly

电器板总成



0501 Electrical Assembly

电器板总成

Index 序号	Part No. 零件编号	Part Name 零件名称	No. 数量	Applied Date 试用日期	Remark 备注
1	1116-520006-00	Charger 充电器	1		
2	0000-000433-00	Screw M8×12 螺钉	1		
3	1116-500008-00	Horn 喇叭	1		
4	01 1116-500006-00-00	Controller 控制器	1	-4281803587	
	02 1116-500006-00-10	Controller 控制器	1	4281803588-	EP20191025
5	1114-540000-00	Emergency Stop Switch 急停开关总成	1		Pos.24-25
6	1120-540001-00-B	Fuse Stand 保险丝座	1		
7	0000-000004-00	Screw M5×12 螺钉	2		
8	0000-000206-00	Lockwasherø5 弹垫	2		
9	0000-000665-00	Screw M4×45 螺钉	2		
10	0000-000089-00	Flatwasherø4 平垫	2		
11	01 1121-500001-00	Battery 电瓶	4	-427153349	30Ah
	02 1121-500001-0A	Battery 电瓶	4	427153350-	30Ah
12	0000-000128-00	Flatwasherø5 平垫	4		
13	0000-000126-00	Screw M6×16 螺钉	2		
14	0000-000176-00	Flatwasherø8 平垫	4		
15	0000-000196-00	Nut M8 螺母	2		
16	1115-510003-00	Fuse 100A 保险丝	1		
17	1115-520013-00	LED Lamp LED 灯	1		
18	1115-510009-00	Lamp Holder LED 灯座	1		
19	0000-000004-00	Screw M5×12 螺钉	9		
20	4310-500002-00	Plate 卷线器固定板	1		
21	4310-540000-50	Reel CHINA 卷线器 国标	1		For CHINA

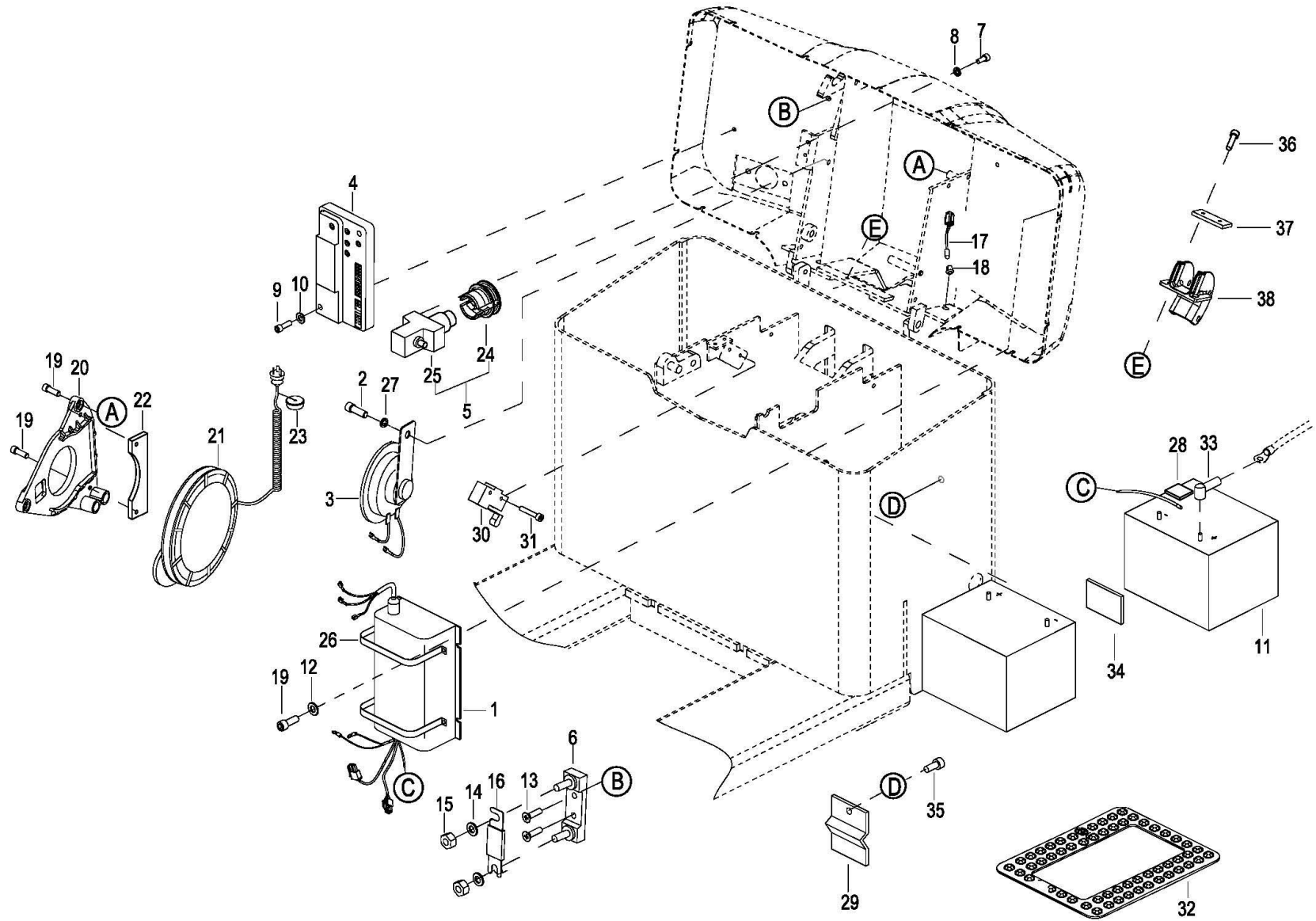
0501 Electrical Assembly

电器板总成

Index 序号	Part No. 零件编号	Part Name 零件名称	No. 数量	Applied Date 试用日期	Remark 备注
21	4310-540000-10	Reel USA 卷线器 美标	1		For USA
21	4310-540000-00	Reel EUROPE 卷线器 欧标	1		For EUROPE
21	4310-540000-20	Reel AUS 卷线器 澳标	1		For AUS
21	4310-540000-30	Rreel END 卷线器 英标	1		For END
21	4310-540000-40	Reel JAPAN 卷线器 日标	1		For JAPAN
21	4310-540000-60	Reel CH 卷线器 瑞标	1		For CH
22	4310-500004-00	Plate 固定锁板	1		
23	1115-120002-00	Charger Cap 充电线盖	1		
24	1114-540001-00	Switch Button 开关按钮	1		
25	1114-540002-00	Emergency Stop Switch 开关座	1		
26	1115-500009-00	Charger Hoop 充电器抱箍	2		
27	0000-000159-00	Lockwasher ø8 弹垫	1		
28	1115-520020-00	3M Patch 3M 贴片	1		
29	1116-150000-00	Battery bracket 电瓶托架	2	-4281402677	
30	1120-500006-00	Lifting Limit Switch 限位开关	1		
31	0000-000208-00	Screw M4×25 螺钉	2		
32	1115-100005-00	Rubber Cushion 橡胶垫	2		
33	2121-500002-00	Sleeve, Red 烟斗护套, 红色	4		
33	2121-500003-00	Sleeve, Black 烟斗护套, 黑色	4		

050101 Setting Board Assembly

电器板总成



050101 Electrical Assembly

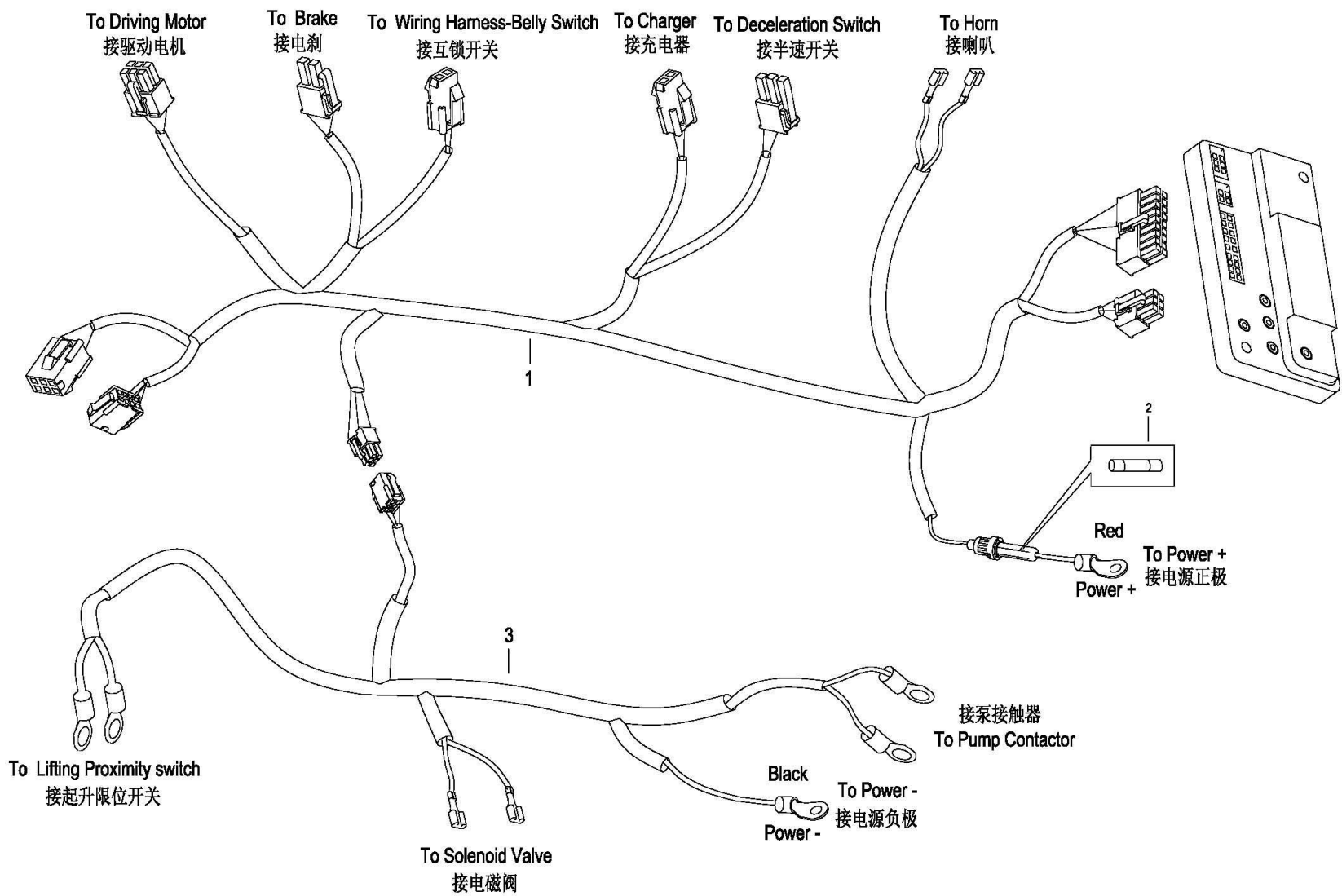
电器板总成

Index 序号	Part No. 零件编号	Part Name 零件名称	No. 数量	Applied Date 试用日期	Remark 备注
1	1116-520006-00	Charger 充电器	1		
2	0000-000433-00	Screw M8×12 螺钉	1		
3	1116-500008-00	Horn 喇叭	1		
4	1116-500006-00-00	Controller 控制器	1		
5	1114-540000-00	Emergency Stop Switch 急停开关总成	1		Pos.24-25
6	1120-540001-00-B	Fuse Stand 保险丝座	1		
7	0000-000004-00	Screw M5×12 螺钉	2		
8	0000-000206-00	Lockwasherø5 弹垫	2		
9	0000-000665-00	Screw M4×45 螺钉	2		
10	0000-000089-00	Flatwasherø4 平垫	2		
11	01 1121-500001-0A	Battery 电瓶	4	427153350-	30Ah, Superseded by 1116-500001-00-02
	02 1116-500001-00-02	Battery 电瓶	4	427153350-	30Ah,EP20191120-01
12	0000-000128-00	Flatwasherø5 平垫	4		
13	0000-000126-00	Screw M6×16 螺钉	2		
14	0000-000176-00	Flatwasherø8 平垫	4		
15	0000-000196-00	Nut M8 螺母	2		
16	1115-510003-00	Fuse 100A 保险丝	1		
17	01 1115-520013-00	LED Wire Harness LED 灯总成	1		Superseded by 1115-520013-DZ
	02 1115-520013-DZ	LED Wire Harness LED 灯总成	1		EP20200321
18	1115-510009-00	Lamp Holder LED 灯座	1		
19	0000-000004-00	Screw M5×12 螺钉	9		
20	4310-500002-00	Plate 卷线器固定板	1		
21	4310-540000-50	Reel CHINA 卷线器 国标	1		For CHINA
21	4310-540000-10	Reel USA 卷线器 美标	1		For USA
21	4310-540000-00	Reel EUROPE 卷线器 欧标	1		For EUROPE

21		4310-540000-20	Reel AUS	卷线器 澳标	1		For AUS
21		4310-540000-30	Rreel END	卷线器 英标	1		For END
21		4310-540000-40	Reel JAPAN	卷线器 日标	1		For JAPAN
21		4310-540000-60	Reel CH	卷线器 瑞标	1		For CH
22		4310-500004-00	Plate	固定锁板	1		
23		1115-120002-00	Charger Cap	充电线盖	1		
24		1114-540001-00	Switch Button	开关按钮	1		
25		1114-540002-00	Emergency Stop Switch	开关座	1		
26		1115-500009-00	Charger Hoop	充电器抱箍	2		
27		0000-000159-00	Lockwasher ø8	弹垫	1		
28		1115-520020-00	3M Patch	3M 贴片	1		
29		1116-151000-00	Plate	电瓶压紧板	2	4281402678-	EP20190603
30		1120-500006-00	Lifting Limit Switch	限位开关	1		
31		0000-000208-00	Screw M4×25	螺钉	2		
32		1115-100005-00	Rubber Cushion	橡胶垫	2		
33		2121-500002-00	Sleeve, Red	烟斗护套, 红色	4		
33		2121-500003-00	Sleeve, Black	烟斗护套, 黑色	4		
34		1115-100003-f0	Rubber Cushion	自粘橡胶垫	2	4281402678-	EP20190603
35		0000-000322-00	Screw M8x25	螺钉	2	4281402678-	EP20190603
36		0000-000208-00	Screw M4x25	螺钉	2	4281003251-	EP20191120-04
37		1115-500004-0A	Plate	压线板	1	4281003251-	EP20191120-04
38		1116-513001-00	Wire Holder	主线束固定架	1	4281003251-	EP20191120-04

0502 Wire Harness Assembly

线束总成

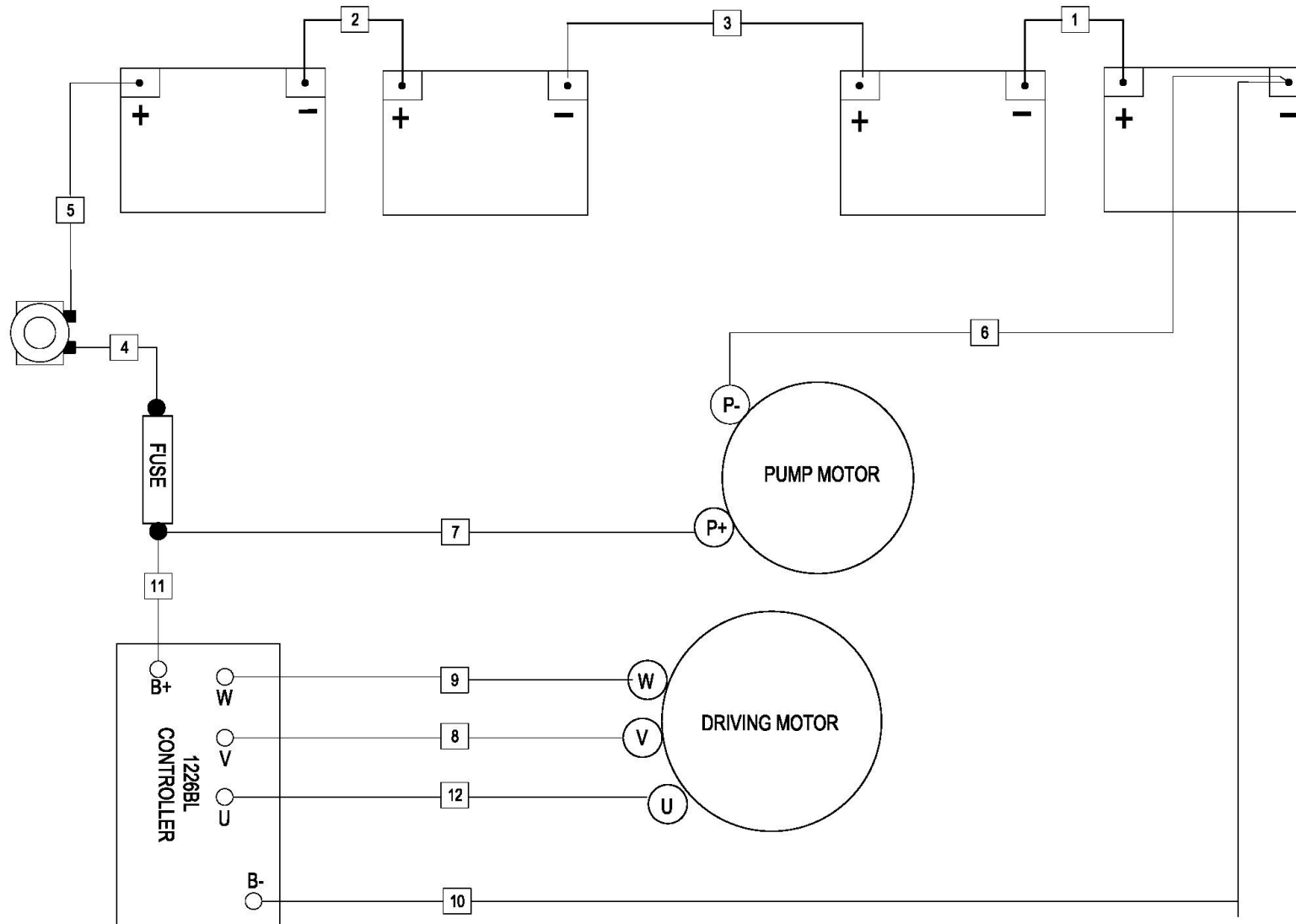


0502 Wire Harness Assembly

线束总成

Index 序号	Part No. 零件编号	Part Name 零件名称		No. 数量	Applied Date 试用日期	Remark 备注
1	1116-520001-00	Master Wire Harness	主线束	1		
2	1120-500010-00	Fuse 10A	保险丝	1		
3	1116-520002-00	Wire Harness Of Pump	液压站线束	1		

0503 Cable Assembly
 电缆总成



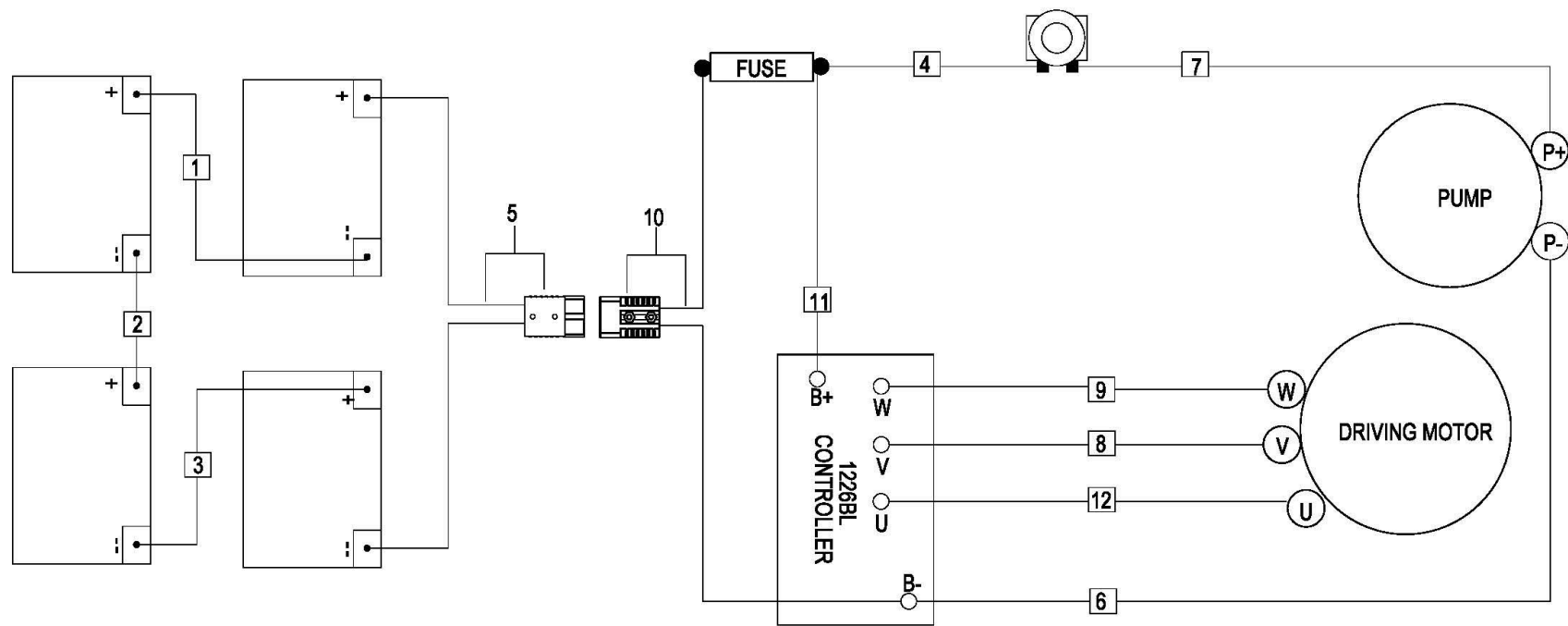
0503 Cable Assembly

电缆总成

Index 序号	Part No. 零件编号	Part Name 零件名称		No. 数量	Applied Date 试用日期	Remark 备注
1	1116-530011-00	Battery Connector Cable	电瓶连接电缆 C5	1		
2	1116-530010-00	Battery Connector Cable	电瓶连接电缆 C4	1		
3	1116-530009-00	Battery Connector Cable	电瓶连接电缆 C3	1		
4	1116-530008-00	C2 Cable	熔断器至紧停开关 C2	1		
5	1116-530007-00	C1 Cable	电瓶正极至急停开关C1	1	-4281501534	
6	1116-530006-00	P Cable-	P-线	1		
7	1116-530005-00	P Cable+	P+线	1		
8	1116-530004-00	M2Cable	M2线	1		
9	1116-530003-00	M1Cable	M1线	1		
10	1116-530002-00	B Cable-	B-线	1	-4281501534	
11	1116-530001-00	B Cable+	B+线	1		
12	1116-530012-00	M3Cable	M3线	1		

050301 Cable Assembly

电缆总成



050301 Cable Assembly

电缆总成

Index 序号	Part No. 零件编号	Part Name 零件名称	No. 数量	Applied Date 试用日期	Remark 备注
1	1116-530011-00	Battery Connector Cable 电瓶连接电缆 C5	1		
2	1116-530010-00	Battery Connector Cable 电瓶连接电缆 C4	1		
3	1116-530009-00	Battery Connector Cable 电瓶连接电缆 C3	1		
4	1116-530008-00	C2 Cable 熔断器至紧停开关 C2	1		
5	1116-530013-00	Battery cable 电瓶插拔器电缆	1	4281501535-	EP20191120-05
6	1116-530006-00	P Cable- P-线	1		
7	1116-530005-00	P Cable+ P+线	1		
8	1116-530004-00	M2Cable M2线	1		
9	1116-530003-00	M1Cable M1线	1		
10	1116-530014-00	Power cable 控制器插拔器电缆	1	4281501535-	EP20191120-05
11	1116-530001-00	B Cable+ B+线	1		
12	1116-530012-00	M3Cable M3线	1		