



YAMAHA

MODEL YEAR **2023**

OWNER'S / OPERATOR'S MANUAL



PERSONAL TRANSPORT VEHICLE

⚠ Read this manual carefully before operating this vehicle.

CONCIERGE 4



DR2 4PA POWERTECH AC

LIT-19626-A2-83

J2D-F8199-15

©2022 Yamaha Motor Company



WARNING: This product can expose you to chemicals including phthalates and lead which are known to the State of California to cause cancer and birth defects or other reproductive harm. For more information go to www.P65Warnings.ca.gov

INTRODUCTION

Congratulations on your purchase of a Yamaha four-passenger vehicle. This manual contains information you will need for proper operation, maintenance, and care of your vehicle. A thorough understanding of these simple instructions will help you to obtain maximum enjoyment from your new Yamaha.





If you have any questions about the operation or maintenance of your vehicle, please consult a Yamaha dealer.

Yamaha Golf-Car Company

**DR2 4PA POWERTECH AC
OWNER'S/OPERATOR'S MANUAL
© 2023 by Yamaha Golf-Car Company
1st edition, October 2022
All rights reserved. Any reprinting
or unauthorized use without the
written permission of
Yamaha Golf-Car Company
is expressly prohibited.
Printed in U.S.A.
LIT-19626-A2-83**

IMPORTANT MANUAL INFORMATION

Particularly important information is distinguished in this manual by the following notations:

	This is the safety alert symbol. It is used to alert you to potential personal injury hazards. Obey all safety messages that follow this symbol to avoid possible injury or death.
	A WARNING indicates a hazardous situation which, if not avoided, could result in death or serious injury.
	A NOTICE indicates special precautions that must be taken to avoid damage to the four-passenger vehicle or other property.
	A TIP provides key information to make procedures easier or clearer.

TIP

Yamaha continually seeks advancements in product design and quality; therefore, while this manual contains the most current product information available at the time of printing, there may be minor discrepancies between your vehicle and this manual. If you have any questions concerning this manual, please consult your Yamaha dealer.

WARNING

Read and understand this manual completely before operating your vehicle. This manual should be considered a permanent part of your vehicle and should remain with the vehicle when resold.

CONTENTS

CONTENTS

WARRANTY 1

IMPORTANT LABELS 2

 SAFETY INFORMATION 3

CONTROLS 4

PRE-OPERATION CHECKS 5

OPERATION 6

MAINTENANCE AND ADJUSTMENT 7

STORAGE 8

SPECIFICATIONS 9

WIRING 10

©2022 Yamaha Golf-Car Company

WARRANTY

2-YEAR LIMITED WARRANTY FOR TRANSPORTATION AND UTILITY VEHICLES

Yamaha Golf-Car Company hereby warrants that any new Yamaha utility vehicle or any multi passenger cars or specialty vehicles purchased from Yamaha, or an Authorized Dealer or Distributor in the United States will be free from defects in material and workmanship for TWO years from date of purchase, subject to the stated limitations. DURING THE PERIOD OF WARRANTY, any authorized Yamaha golf car service technician, dealer, or distributor will, free of charge, repair or replace, at Yamaha's option, any part adjudged defective by Yamaha due to faulty workmanship or material from the factory. Parts used in warranty repairs will be warranted for the balance of the vehicle's warranty period. All parts replaced under warranty become property of Yamaha Golf-Car Company.

Car Components	Warranty Period	Electric Car Specific Parts	Warranty Period
Brake System (Excluding Shoes / Drums)	2 Years	Battery - Trojan T875 FLA	4 Years or 23,500 amp whichever comes first / without HydroLink Watering System 4 Years or 25,000 amp whichever comes first / with HydroLink Watering System <i>*See Trojan Warranty Statement for details</i>
Body Parts	2 Years		
Bumpers / Rear Floor Cover (Bag Well)	2 Years		
Electrical Wires, Switches, and Relays	2 Years	Battery - Trojan T875 AGM	5 Years or 50,000 amp hours whichever comes first <i>*See Trojan Warranty Statement for details</i>
Frame Assy	2 Years	Battery Charger and DC Cord	2 Years
Floor Mats	2 Years	Electric Motor and MCU	2 Years
Pedal Assy	2 Years	Charger Receptacle	2 Years
Scorecard Holder	2 Years	Throttle Sensor Assy	2 Years
Seats	2 Years		
Steering / Suspension Components	2 Years	Gas Car Specific Parts	Warranty Period
Transaxle / Transmission	2 Years	Clutch (Excluding Drive Belt)	2 Years
Common Accessories	Warranty Period	Intake and/or Exhaust System	2 Years
Windshield	3 Years	Gas Engine	2 Years
Sun Top	2 Years	Starter Generator	2 Years
Tail Light	2 Years	Starting Battery	1 Year
		Throttle / Control Cables	2 Years
		All Remaining Parts	1 Year

EXCLUSIONS from this Warranty shall include any failures caused by:

- Abnormal strain, neglect, or abuse, including lack of proper maintenance, and use contrary to the Owner's/Operator's Manual instructions.
- Accident or collision damage.
- Installation of parts or accessories that are not original equipment.
- Fading, rust, or deterioration due to exposure or ordinary wear and tear.
- Modifications or alterations that affect the car's condition, operation, performance, or durability.
- Damage due to improper transportation.
- Acts of God, e.g. lightning, hail damage, flooding, fire, etc.

This Limited Warranty does not cover any parts replaced due to normal wear or routine maintenance, including oil and air filter elements, brake shoes, tire wear, spark plugs, starter and clutch drive belts. Any charges incurred in transporting a golf car or charger to and from an authorized Yamaha golf car dealer for service or in performing field service are also excluded from this warranty. Gasoline-powered golf car starting batteries on vehicles equipped with a golf course GPS device, or any other device with a parasitic current draw, unless the vehicle is equipped from the factory with an optional deep cycle starting battery, are also excluded from this warranty.

The Customer's Responsibility under this warranty shall be to:

- Operate and Maintain the golf car, personal transportation vehicle (PTV), or commercial (Utility) vehicle as specified in the appropriate Owner's/Operator's manual, and
- Give notice to an authorized Yamaha Golf car dealer/distributor of all apparent defects within ten (10) days of discovery, and make the car available at that time for inspection and repairs at the dealer's/distributor's place of business, and
- Transporting the car to and from an authorized dealer or distributor for warranty service.

WARRANTY TRANSFER: This warranty is to the original purchaser and is not transferable.

EMISSION CONTROL SYSTEM WARRANTY:

Yamaha Golf-Car Company also warrants to the ultimate purchaser of each gas-powered golf car covered by this warranty that the product is designed, built, and equipped so as to conform at the time of sale with all U.S. emission standards applicable at the time of manufacture and that it is free from defects in materials and workmanship which would cause it not to meet these standards within the same time period described in THE PERIOD OF WARRANTY above, or a minimum of two years, whichever is longer. Failures other than those resulting from defects in material or workmanship which arise solely as a result of owner abuse and/or lack of proper maintenance are not covered by this warranty.

Yamaha Golf-Car Company makes no other warranty of any kind, expressed or implied. All implied warranties of merchantability and fitness of merchantability and fitness for a particular purpose which exceed the obligations and time limits stated in this warranty are hereby disclaimed by Yamaha Golf-Car Company and excluded from this Warranty.

Some states do not allow limitations on how long implied warranty lasts, so the above limitation may not apply to you. Also excluded from this Warranty is any incidental or consequential damages including loss of use. Some states do not allow the exclusion or limitation of incidental or consequential damages, so the above exclusion may not apply to you. This Warranty give you specific legal rights, and you may also have other rights, which vary from state to state.

4-YEAR LIMITED WARRANTY FOR TROJAN® BRAND BATTERIES WHEN CHARGED WITH A YAMAHA PROVIDED 48-VOLT CHARGER

Yamaha Golf-Car Company (herein referred to as "YGC") hereby warrants to the Original Retail Purchaser or Lessee of a Yamaha Drive2 Golf car, PTV, Multi passenger, or Utility car purchased from Yamaha, or an Authorized Dealer or Distributor in the United States, that the Trojan® brand batteries charged with a Yamaha provided battery charger will be free from defects in materials and workmanship, and will provide "36-hole performance" as follows:

- 4-years or 20,000 amp-hours with T-105 FLA
- 4-years or 21,500 amp-hours with T-105 FLA batteries & the addition of a factory-installed Trojan HydroLink Battery Watering System.
- 4-years or 23,500 amp-hours with T-875 FLA
- 4-years or 25,000 amp-hours with T-875 FLA batteries & the addition of a factory-installed Trojan HydroLink Battery Watering System.
- 5-years or 50,000 amp-hours with T-875 AGM

WARRANTY LIMITATIONS

Yamaha Golf-Car Company's and Trojan Battery Company's limit of liability shall be to replace a defective battery. Replacement shall mean furnishing a new battery or used battery with sufficient life to complete the remainder of the warranty term, at no cost to the purchaser during the limited warranty period, except for labor or transportation expenses. The following conditions apply:

- Amp-hours will be determined either through the PC Genius controller or through other means necessary in the event of a controller failure or replacement.
- This warranty only applies to factory installed Trojan battery sets charged with a Yamaha provided battery charger.
- The customer must perform (or have a contracted Yamaha Dealer perform) all periodic maintenance and discharge testing as specified in the Yamaha Service Manual Maintenance Schedule. No labor or transportation expenses are included in this limited warranty. Maintenance records must be kept.
- YGC supplied or approved replacement batteries may be of a different brand or capacity, but are warranted to provide 36-hole performance for the remainder of the original warranty term.
- "36-hole performance" is defined as 60-minutes discharge time as tested and recorded using a Lester model #17770 discharge machine at an ambient temperature of between 60 and 100 degrees F (16 and 38 degrees C). Ambient temperatures between 60 and 80 degrees F (16 and 27 degrees C) must be corrected using the formula: Adjusted Discharge Time = (Discharge Minutes) / (1-(((80-TEMP)/100) x 0.64)).
- The customer must notify the Dealer within 10 days that a vehicle has failed to make 36 holes per day. YGC reserves the right to test and recharge any battery in question.

ANY IMPLIED WARRANTY OF MERCHANTABILITY OR FITNESS FOR A PARTICULAR PURPOSE SHALL BE VOID AND EXCLUDED SUBSEQUENT TO ONE YEAR FROM THE DATE OF PURCHASE. THE REPLACEMENT OF THE BATTERY IS THE EXCLUSIVE REMEDY UNDER THIS WRITTEN WARRANTY OR ANY IMPLIED WARRANTY. YAMAHA MAKES NO OTHER REPRESENTATION OR WARRANTY OF ANY KIND, AND NO REPRESENTATIVE, EMPLOYEE, DISTRIBUTOR OR DEALER OF YAMAHA HAS THE AUTHORITY TO MAKE OR IMPLY ANY REPRESENTATION, PROMISE OR AGREEMENT WHICH IN ANY WAY VARIES THE TERMS OF THIS WARRANTY.

LIMITED WARRANTY EXCLUSIONS:

Without limiting the generality of the foregoing in any way, and as part of its limited warranty exclusion, YGC does not warrant that its battery is suitable for use in any application other than in a golf car or utility vehicle. As in the use of any battery, a prudent owner will read and study the charger owner's manual, the vehicle owner's manual, the operator's instructions, and the battery warning labels; and will exercise due care in working on or around batteries.

THE PROVISIONS OF THIS LIMITED WARRANTY SHALL NOT APPLY IF BATTERIES ARE SUBJECT TO ANY OF THE FOLLOWING CONDITIONS:

- Abuse or neglect such as improper fluid levels, loose wiring, rusted or corroded hardware.
- Lack of proper maintenance as outlined in the electric vehicle Owner's / Operator's Manual. For example, lack of regular battery watering or adding water to battery before charging.
- Damage caused by improper installation of the battery.
- Neglect, breakage, freezing, fire, explosion, wreckage, the addition of any chemical, or the operation of the battery in an uncharged condition (below half-charge – 1.200 specific gravity).
- Battery charged by systems other than the original equipment type battery charger.
- On fleet golf cars, the use of any non-YAMAHA supplied electrical devices that consume more than one amp-hour per round or two amp-hours per day of battery energy. Examples of these devices include, but are not limited to: heating or cooling systems; GPS (global position system) devices; information gathering devices; lights; radios or stereos; or yardage measuring devices.
- Less than one charger per car or inadequate facility electrical power to power all chargers. Examples include more than one charger on a single circuit, circuit rating of less than 15 amps, or not enough circuits for the number of cars.
- In fleet applications, less than one battery charger per vehicle. For example, using only 10 battery chargers to charge a 15 car fleet.
- The use of any system that does not allow the battery chargers to shut off automatically. For example, timer systems that are designed to switch battery charger AC power on and off during peak demand hours.
- Damage not resulting from a defect in materials or workmanship or which occurs due to abuse or neglect (including failure to provide reasonable and necessary maintenance), accident, alteration or acts of God is excluded from this limited warranty.

THIS BATTERY IS INTENDED TO BE USED BY PERSONS WITH TRAINING AND EXPERIENCE WITH BATTERIES AND ONLY IN YAMAHA ELECTRIC VEHICLES. ANY OTHER USE RENDERS THE LIMITED WARRANTIES EXPRESSED HEREIN AND ALL IMPLIED WARRANTIES NULL AND VOID AND SAME ARE HEREBY EXCLUDED.

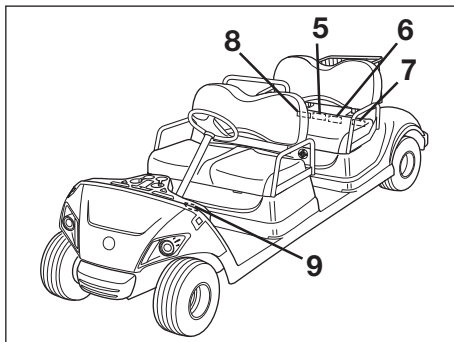
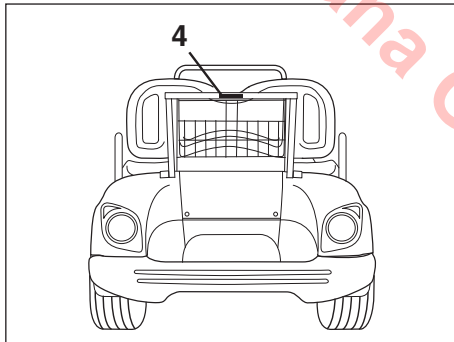
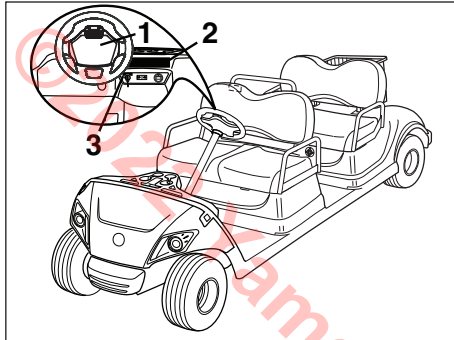
ALSO EXCLUDED FROM THIS LIMITED WARRANTY ARE ANY AND ALL INCIDENTAL OR CONSEQUENTIAL DAMAGES INCLUDING, BUT NOT LIMITED TO, LOSS OF USE OR REVENUE, LOSS OF TIME, INCONVENIENCE OR ANY OTHER ECONOMIC LOSS.

Some states do not allow limitation on the duration of an implied warranty, exclusions or limitations of incidental or consequential damages. Therefore, the above limitations or exclusions may not apply to you. This warranty gives you specific legal rights, and you may also have other rights, which vary state to state.

IMPORTANT LABELS

SAFETY AND INSTRUCTION LABELS

Read the following labels carefully before operating your utility vehicle. If any of these labels are damaged or missing, contact a Yamaha dealer for replacements.



IMPORTANT LABELS

1



2


2

⚠ WARNING

To reduce the risk of accidents and injury or DEATH:

- Read the label located on the steering wheel before operation.
- Operate only when authorized and only in designated areas.
- Operate from driver's seat only.
- This vehicle is restricted to 2 occupants per bench seat.
- Do not start vehicle until all occupants are seated.
- Remain seated and hold on when in motion.
- Keep entire body inside vehicle.
- Drive slowly in turns.
- Drive straight up and down slopes.
- Set parking brake before leaving vehicle.
- Turn main switch to "OFF" and remove key when not in use.
- Do not operate or ride while distracted or under the influence of alcohol or drugs.

YAMAHA ***-K7768-***



3



4

⚠ WARNING

"Do not stand or sit in this area. You could fall and be injured."

YAMAHA ***-K7766-***

IMPORTANT LABELS

5

<p>BATTERY INSTALLATION AND WIRE LEAD CONNECTION</p>	<p>INSTALLATION DES BATTERIES ET RACCORDEMENT DES FILS</p>	<p>⚠WARNING</p> <ul style="list-style-type: none"> Explosion hazard when recharged when batteries are completely discharged. Always wear headlight. Always wear gloves and goggles when working near batteries. 	<p>⚠ADVERTISSEMENT</p> <ul style="list-style-type: none"> Les gaz explosifs se dégagent lors de la charge ou de la charge des batteries. Portez toujours votre casque. Portez toujours des gants et des lunettes de protection lors du travail près des batteries. 	<p>⚠WARNING</p> <ul style="list-style-type: none"> Spillages acide et batteries sulfées peuvent provoquer des brûlures graves si elles touchent la peau et les vêtements. Ne portez jamais de lunettes. Ne portez jamais de gants. Ne portez jamais de chaussures. Ne portez jamais de vêtements en coton. Ne portez jamais de vêtements en laine. Ne portez jamais de vêtements en soie. Ne portez jamais de vêtements en cuir. Ne portez jamais de vêtements en tissu synthétique. Ne portez jamais de vêtements en tissu à mailles. Ne portez jamais de vêtements en tissu à carreaux. Ne portez jamais de vêtements en tissu à rayures. Ne portez jamais de vêtements en tissu à pois. Ne portez jamais de vêtements en tissu à fleurs. Ne portez jamais de vêtements en tissu à damier. Ne portez jamais de vêtements en tissu à carreaux. Ne portez jamais de vêtements en tissu à rayures. Ne portez jamais de vêtements en tissu à pois. Ne portez jamais de vêtements en tissu à fleurs. Ne portez jamais de vêtements en tissu à damier. 	<p>⚠ADVERTISSEMENT</p> <ul style="list-style-type: none"> Les courants courts et les étincelles peuvent causer des brûlures. Ne portez jamais de lunettes. Ne portez jamais de gants. Ne portez jamais de chaussures. Ne portez jamais de vêtements en coton. Ne portez jamais de vêtements en laine. Ne portez jamais de vêtements en soie. Ne portez jamais de vêtements en cuir. Ne portez jamais de vêtements en tissu synthétique. Ne portez jamais de vêtements en tissu à mailles. Ne portez jamais de vêtements en tissu à carreaux. Ne portez jamais de vêtements en tissu à rayures. Ne portez jamais de vêtements en tissu à pois. Ne portez jamais de vêtements en tissu à fleurs. Ne portez jamais de vêtements en tissu à damier.
---	---	---	--	---	---

6

NOTICE

Move switch to the "TOW" position before towing or storage. Failure to do so may lead to:

- Drive system damage when towing.
- Complete battery discharge and battery damage when storing long term.
- After moving switch from "RUN" to "TOW", wait 15 seconds minimum before switching again.

NOTIFICATION

Mettre l'interrupteur à position "TOW" avant de remorquer ou avant l'entreposage. Non-observation pourrait:

- Dommages de système d'entraînement en remorquant.
- Causer une décharge totale de la batterie et endommager la batterie pendant l'entreposage à long terme.
- Après avoir changé l'interrupteur de position "RUN" à position "TOW", attendre un minimum de 15 secondes avant de le remettre.

YAMAHA

***-K8298-**

7

DATE OF CONSTRUCTION: **** ** MY****
 YAMAHA MOTOR POWERED PRODUCTS CO., LTD
 200-1 SAKAGAWA, KAKEGAWA, JAPAN

MODEL: ***** **

MAX. BATTERY WEIGHT: *** kg MAX. POWER: *** hp (** KW)

NOMINAL SYSTEM VOLTAGE: **V WEIGHT (NO BATT): ***** kg

VEHICLE LOAD CAPACITY: *** kg PER SEAT, ** kg BAGWELL

***-F4236-**

8



9

WARNING

Improper tire pressure or overloading can cause loss of control. To reduce the risk of accidents and injury or DEATH:

- Operating tire pressure: set with tires cold.

Tire size	Recommended	
	Front	Rear
205/65-10, 4ply	151 kPa, 22 psi /	151 kPa, 22 psi
18x8.50-8, 4ply	137 kPa, 20 psi /	137 kPa, 20 psi

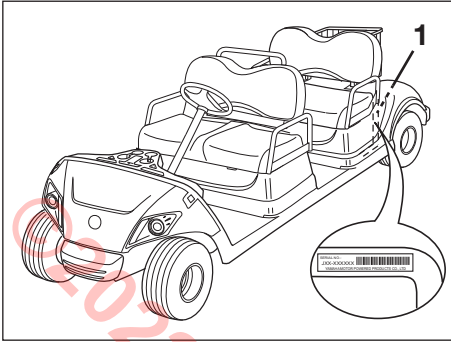
YAMAHA

***-F1696-**

2

IMPORTANT LABELS

2



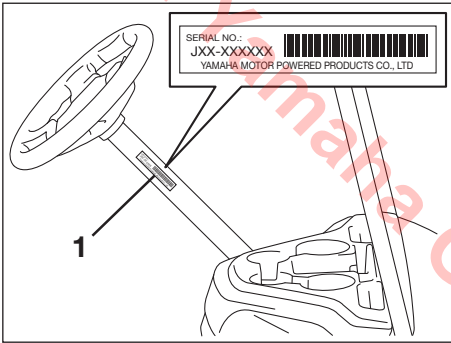
1. Vehicle serial number

SERIAL NUMBER

The serial number is identified in the location shown.

TIP

The first three digits of the serial number are for model identification; the remaining digits are the unit production number. Keep a record of these numbers for reference when ordering parts from a Yamaha Golf-Car Company dealer.



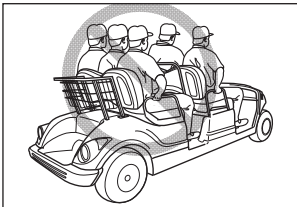
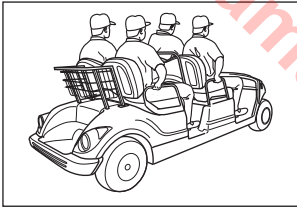
1. Vehicle serial number

Serial number:

Yamaha vehicles are designed to be simple to operate. However, be sure to observe the following:

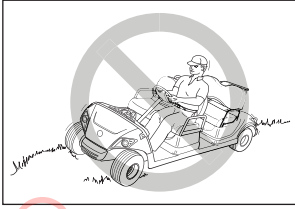
BEFORE USING THE FOUR-PASSENGER VEHICLE

- Read this Owner's/Operator's manual and all safety and instruction labels on the vehicle before operating.
- Perform the pre-operation checks found in Section 5 of this manual.
- Only authorized people should drive the vehicle, from the driver's side only, and only in designated areas.
- Do not allow more than two occupants per seat. This vehicle is restricted to a maximum of four occupants: a driver and passenger in the front seat and two passengers in the rear seat.



- Do not operate the vehicle while under the influence of alcohol or drugs; their effect on vision and judgment make operating a vehicle dangerous.
- Do not operate the vehicle on public streets, roads or highways unless allowed by law or local regulating authority.
- Do not allow more than four people to ride in the four-passenger vehicle. This vehicle is restricted to a maximum of four occupants: a driver and passenger in the front seat and two passengers in the rear seat.

SAFETY INFORMATION



WHILE OPERATING THE FOUR-PASSENGER VEHICLE

- Keep your entire body inside the vehicle, remain seated and hold on when the vehicle is in motion.
- Do not start the vehicle until all occupants are seated.
- Keep your hands on the steering wheel and your eyes on the path ahead.
- Use extra care in congested areas or when backing up. Always back up slowly, and watch carefully.
- Avoid starting or stopping abruptly.
- Vary the speed of the vehicle to match the terrain of the course.
- Avoid turning the steering wheel too sharply at higher speeds.
- Always drive slowly straight up or straight down slopes – never at an angle.
- All occupants should remain inside the vehicle, remain seated, and hold on when the vehicle is in motion.
- Do not start the vehicle until all occupants are seated and holding on, with their entire bodies inside the vehicle.
- Do not use rear seat for cargo or luggage storage. Rear seat is to be used for one- or two-person occupancy only.
- Do not make any modification or addition which affects capacity or safe operation, or make any changes not in accordance with the owner's/operator's manual.



SAFETY INFORMATION

Like all machines, four-passenger vehicles can cause injury if improperly used or maintained.

This section contains broad safety practices required for safe vehicle operation.

Experience has shown that four-passenger vehicles are safe when operated in accordance with the safety warnings affixed to every vehicle.

If you are responsible for the operation and maintenance of this vehicle, we encourage you to implement this vehicle safety program.

3

DRIVER QUALIFICATIONS

Only authorized people should operate the vehicle. It is recommended that only people who possess a valid motor vehicle driver's license be allowed to operate the vehicle.

Place operation and safety instructions recommended by the vehicle manufacturer in a conspicuous place near the vehicle rental area or pick-up area. It is also recommended that the following warning be posted in a conspicuous location:

WARNING

Do not operate four-passenger vehicles when under the influence of alcohol or drugs. Death or serious personal injury can result from failing to comply with the safety and warning instructions affixed to the vehicle.

HAZARD PREVENTION

The following hazards must be made safe:

Steep Grades – Where steep grades exist, restrict vehicles to designated pathways when possible. In addition, identify steep grades with a suitable warning like:

WARNING

Descend steep grades slowly with foot on brake. Death or serious personal injury can result from failing to comply with the safety and warning instructions affixed to the vehicle.

- **Sharp Turns, Blind Corners and Bridge Approaches** – Adhere to all warning signs and take proper precautions to avoid the hazard.
- **Wet Areas** – Wet grass may cause a vehicle to lose traction and may affect stability. Reduce speed in wet areas or during periods of inclement weather.
- **Loose Terrain** – Avoid areas of loose terrain which may cause a vehicle to lose traction and affect stability. Take notice of conditions and reduce speed when driving on uneven or loose terrain.
- **Pedestrian Areas** – Avoid areas with pedestrian traffic or congested areas whenever possible to prevent accidents. If it is impractical to avoid these areas, always remember that pedestrians have the right of way. When approaching pedestrian or congested area always reduce speed, drive slowly, use caution and watch for pedestrians.

MAINTENANCE REQUIRED FOR FOUR-PASSENGER VEHICLE SAFETY

Practice the following to help ensure the safety of vehicle operators and passengers:

- **Preventative Maintenance.** Perform all scheduled maintenance in accordance with manufacturer's recommendations to provide the user with a safe, properly operating vehicle.
- **Personnel.** Allow only qualified, trained and authorized personnel to inspect, adjust and maintain the vehicle.

- **Parts and Materials.** Use only replacement parts and materials recommended by the manufacturer.
- **Ventilation.** Properly ventilate all maintenance and storage areas in accordance with applicable fire codes and ordinances to avoid fire hazards. Ventilation is also required to remove hydrogen gas from the vehicle storage areas during the battery charging process.

For electric powered vehicles, the amount of hydrogen gas emitted during charging depends on a number of factors, such as the condition of the batteries, the output rate of the battery charger and the amount of time the batteries are on charge. Because of the highly volatile nature of hydrogen gas and its propensity to rise and accumulate at the ceiling in pockets, a minimum of five air changes per hour is recommended. Consult applicable fire and safety codes for the specific ventilation levels requirement, as well as requirements for the use of explosion proof electrical apparatus.

SAFETY PRECAUTIONS DURING MAINTENANCE

When performing maintenance, follow all safety instructions contained in the manufacturer's operation and service manuals, as well as the following safety procedures:

- Properly immobilize vehicle before beginning any maintenance to avoid any unexpected vehicle movement.
- Properly block chassis before working underneath vehicle to avoid any unexpected vehicle movement.
- When working on the battery, do not smoke, or allow any sparks or open flames near the vehicle, to avoid any fires or explosions.
- Before working on an electric vehicle, disable the car's electrical system in accordance with the manufacturer's instructions to avoid electrical shock or damage to the electrical system.
- Use only properly insulated tools when working on electrically powered vehicles or around batteries to

SAFETY INFORMATION

3

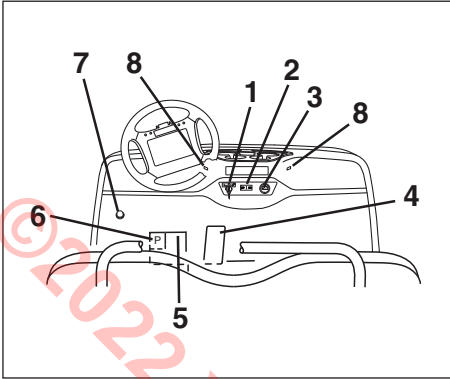
avoid electrical shock or damage to the electrical system.

- Maintain all safety devices, including brakes, steering mechanisms, warning devices and governors, in a safe operating condition. Do not modify these safety devices as supplied by the manufacturer.
- After each maintenance or repair, the vehicle must be driven by a qualified, trained and authorized person — in an area free of pedestrian traffic — to ensure proper operation and adjustment.
- Record all maintenance performed in a maintenance record log by date, name of person performing maintenance and type of maintenance. Periodically inspect maintenance log to ensure accurate and complete entries.
- Provide operator comment cards to assist in identifying non-periodic maintenance needs for specific four-passenger vehicles.
- Maintain in a legible condition all nameplates, warnings and instructions provided by the manufacturer.
- If new nameplates, warnings or instructions are needed, contact your Yamaha Golf-Car Company dealer.

STORAGE AND BATTERY CHARGING

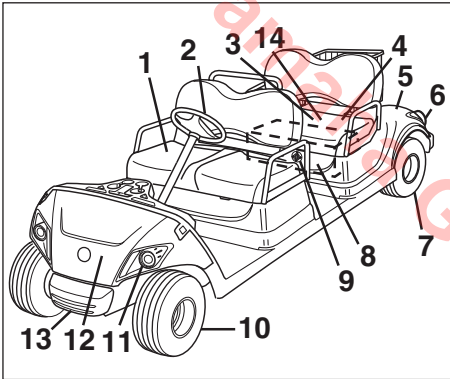
Take the following precautions to ensure maintenance worker safety:

- Only use battery changing and charging facilities and procedures that are in accordance with applicable ordinances and regulations to avoid explosions, electrical shock or damage to the electrical system.
- Periodically inspect charging facilities and procedures to be certain that applicable safety codes, regulations and procedures are being followed to avoid any fires or explosions.



FEATURES

1. Main switch
2. Drive select switch
3. Battery gauge
4. Accelerator pedal
5. Brake pedal
6. Parking brake pedal
7. Horn switch
8. USB ports

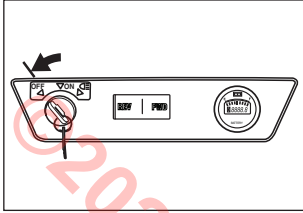


1. Front seat
2. Steering wheel
3. Tow switch
4. Rear seat
5. Rear body
6. Taillights
7. Rear tire
8. Batteries
9. DC charger receptacle
10. Front tire
11. Headlights
12. Front body
13. Front bumper
14. Fuses

CONTROLS

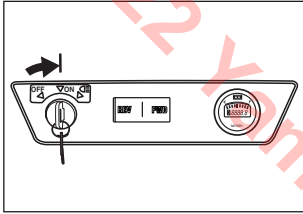
MAIN SWITCH

The main switch controls the following items:



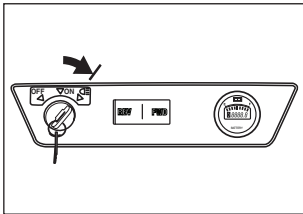
“OFF”

All electrical circuits are switched off (motor controller unit remains energized). The vehicle cannot be operated. The key can be removed only in this position.



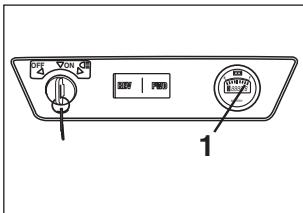
“ON”

Electrical circuits are switched on. The vehicle can be driven.



“ON” WITH LIGHTS

The functions for this position are the same as for the ON position; however, this position will activate the headlights and taillights.

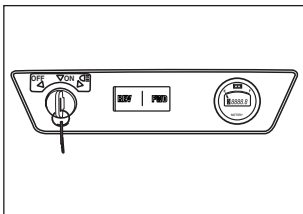


1. Battery gauge

BATTERY GAUGE

The battery gauge displays how much charge is left in the batteries.

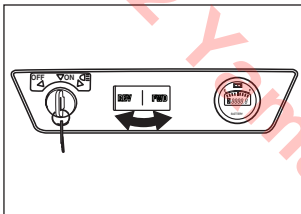
When the batteries are at full charge, all the LEDs will be lit.



As the battery energy decreases, the LEDs will move to the left toward the “E.” When the LED light below the “E” is the only one lit, the batteries must be charged.

Use the table to determine the remaining battery capacity. For example, if 7 of the 9 LED lights are lit, batteries still have approximately 47.4 volts left. When the batteries fall to 43.4 volts or less, 1 LED will blink on and off, meaning the batteries should be charged immediately.

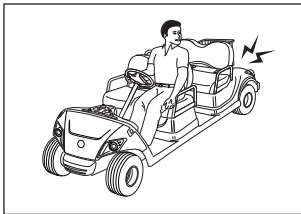
BAR LEVEL	9	8	7	6	5	4	3	2	1	1 BLINK
VOLT	48.95	47.8	47.4	46.9	46.4	46.0	44.8	44.0	43.5	43.4 >



DRIVE SELECT SWITCH

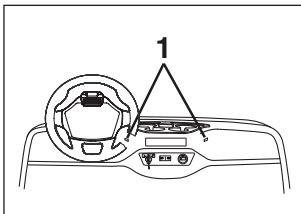
The drive select switch is used to shift the four-passenger vehicle into forward or reverse. After coming to a complete stop, move the switch to the desired position.

Switch Position	Car Movement
FWD	FORWARD
REV	REVERSE



TIP

The reverse alarm will sound when the drive select switch is depressed to the "REV" position.



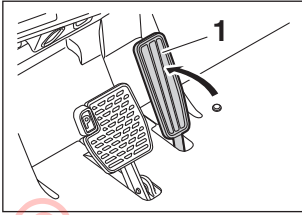
USB PORTS

A USB port is located inside the dash on the driver side and passenger side. These can be used to power or charge USB devices or accessories.

The USB is only powered when the key is in the ON position.

1. USB port

CONTROLS

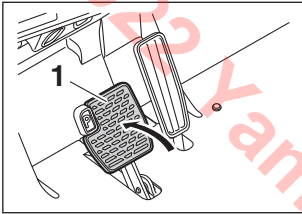


1. Accelerator pedal

ACCELERATOR PEDAL

The accelerator pedal controls the vehicle's speed.

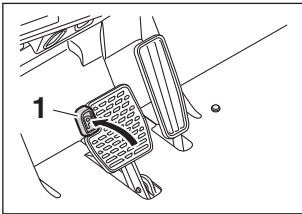
Action	Car Speed
Depress pedal	Increase
Release pedal	Decrease



1. Brake pedal

BRAKE PEDAL

Press down on the brake pedal to stop the vehicle.



1. Parking brake pedal

PARKING BRAKE PEDAL

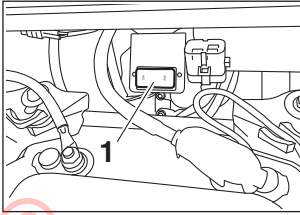
Press down on the parking brake pedal whenever parking the four-passenger vehicle.

TIP

Release the parking brake by depressing the accelerator pedal.

WARNING

The parking brake will automatically release when the accelerator pedal is depressed. If the main switch is in the "ON" position, depressing the accelerator may suddenly cause the vehicle to move.



1. Tow switch

TOW SWITCH

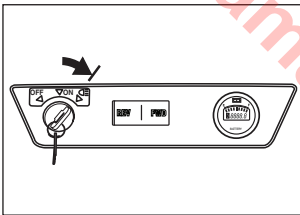
Before operating the four-passenger vehicle, make sure the tow switch is in the “RUN” position.

NOTICE

Ensure that the “Drive Select Switch” is in the “FWD” position and then move the “TOW Switch” to “TOW” before towing.

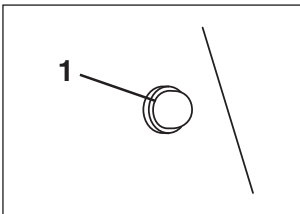
After moving switch from “RUN” to “TOW,” wait 15 seconds minimum before switching again.

Failure to do so may lead to drive system damage while towing.



HEADLIGHT/TAILLIGHT ON POSITION

Turn the main switch all the way to the right to the second ON position. This will activate the headlights and taillights.



1. Horn switch

HORN SWITCH

The horn is located adjacent to the brake pedal, and is activated by depressing with your foot.

TIP

It is advisable to sound the horn when approaching blind corners.

PRE-OPERATION CHECKS

Pre-operation checks should be made each time you use your four-passenger vehicle. Get in the habit of performing the following checks in the same way so that they become second nature.

WARNING

To keep vehicle from moving while performing pre-operation checks:

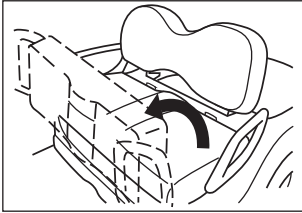
- Remove main switch key.
- Apply parking brake.

Death or serious personal injury can result from failing to comply with the safety instructions in this manual.

5

PRE-OPERATION CHECKS

Refer to the Periodic Maintenance and adjustment charts on pages 24 and 26.



SEAT

Lift up the seat for checking and servicing.

PRE-OPERATION CHECKS

BATTERIES

For Flooded Batteries

Check that the batteries are held securely in place to prevent them from being damaged from vibration or jarring. Also check that no battery caps are missing to prevent battery acid from spilling from the batteries. Check the battery terminals for corrosion and tightness.

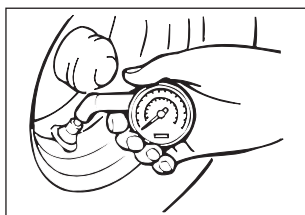
For AGM Batteries (Optional)

Check that the batteries are held securely in place to prevent them from being damaged from vibration or jarring.

Check the battery terminals for corrosion and tightness.

⚠ WARNING

Battery electrolyte is poisonous and dangerous, causing severe burns, etc. It contains sulfuric acid. Avoid contact with skin, eyes or clothing. Ventilate when charging or using in enclosed space. Always shield eyes when working near batteries. KEEP OUT OF REACH OF CHILDREN.



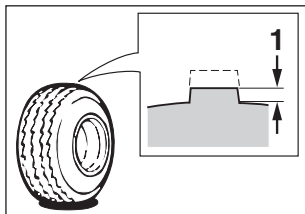
TIRE CONDITION

Tire Air Pressure

Check the tire air pressure before operating the four-passenger vehicle.

Tire pressure:

151 kPa (1.55 kgf/cm², 22 psi)

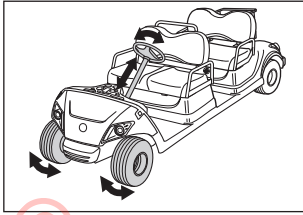


Tire Wear Limit

Check the tire surface for damage, cracks or embedded objects. When tire tread wears down to 1 mm (0.04 in.), replace the tire.

1. Wear limit

PRE-OPERATION CHECKS

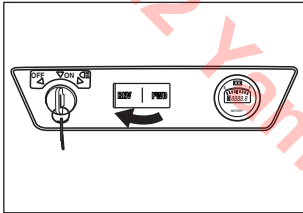


STEERING SYSTEM

Check the steering system for excessive free play by:

- moving the steering wheel up and down, and back and forth.
- turning the steering wheel slightly to the right and left.

If you feel excessive free play, or hear rattling sounds which may indicate loose steering components, consult a Yamaha dealer.



REVERSE ALARM

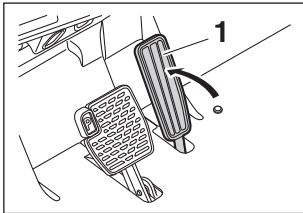
Check the reverse alarm by moving the drive select switch to “REV” for reverse. The alarm should sound.

5

PEDAL OPERATION

Check the following pedal controls for proper operation. If a pedal does not work properly, consult a Yamaha dealer.

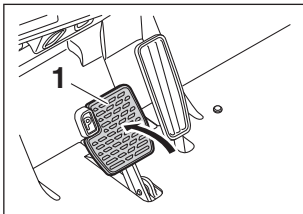
Accelerator Pedal



1. Accelerator pedal

⚠ WARNING

With the main switch in the “OFF” position, make sure the accelerator pedal operates smoothly.

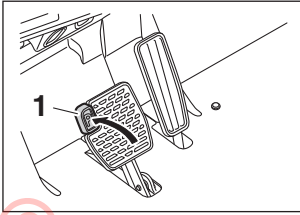


1. Brake pedal

Brake Pedal

Make sure the brake pedal feels firm when pressed and returns to its original position when released.

PRE-OPERATION CHECKS



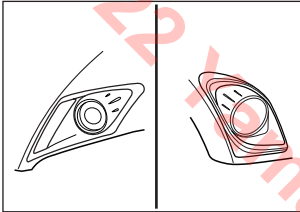
1. Parking brake pedal

Parking Brake Pedal

Make sure the parking brake pedal locks in place with a positive click, and releases when the accelerator pedal is pressed.

TIP

Release the parking brake by depressing the accelerator pedal.

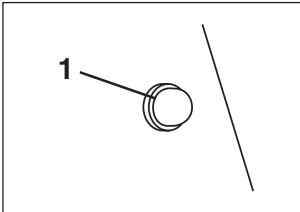


HEADLIGHTS/TAILLIGHTS

Ensure the headlights and taillights are operational.

⚠ WARNING

Never operate the vehicle at night or during inclement weather without properly working headlights/taillights.



1. Horn Switch

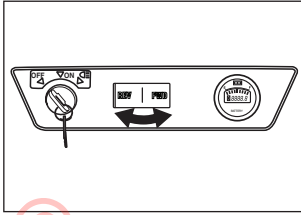
HORN SWITCH

Make sure the horn operates correctly.

BODY AND CHASSIS

Before each use, visually inspect the four-passenger vehicle body and chassis for damage and/or missing parts.

OPERATION

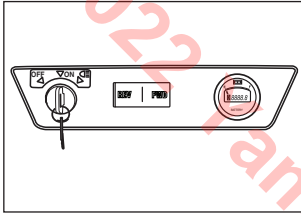


STARTING

1. With the parking brake applied, turn the drive select switch to “FWD” for forward, or “REV” for reverse.

NOTICE

Do not shift from “FWD” (forward) to “REV” (reverse) while the vehicle is moving. Transaxle damage can result.



2. Turn the main switch to “ON.”

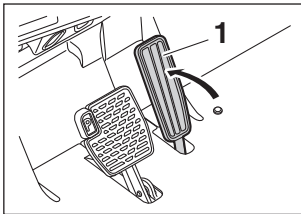
WARNING

Do not depress the accelerator pedal when turning on the main switch or the vehicle may suddenly start moving.

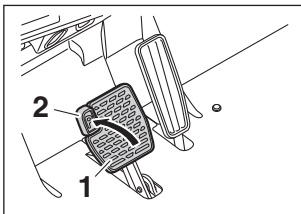
3. Check that your path is clear in the direction you plan to go, and slowly depress the accelerator pedal. The vehicle will start to move.

TIP

The parking brake automatically releases when the accelerator pedal is depressed.



1. Accelerator pedal



1. Brake pedal
2. Parking brake pedal

STOPPING

To stop the four-passenger vehicle gradually press down on the brake pedal.

NOTICE

Do not hold the vehicle on an incline with the accelerator – use the brake. Transaxle damage can result.

When the vehicle has come to a stop, apply the parking brake pedal and turn the main switch to “OFF.”

MAINTENANCE AND ADJUSTMENT

PERIODIC MAINTENANCE AND ADJUSTMENT CHARTS

Regular maintenance is required for the best performance and safe operation of your four-passenger vehicle.

Even if the vehicle isn't driven for the stated mileage or engine hours, the month maintenance intervals should still be followed. Items marked with an asterisk should be performed by a Yamaha dealer as they require special tools, data and technical skills.

WARNING

Be sure to turn off the main switch and apply the parking brake when you perform maintenance, unless otherwise specified. If the owner is not familiar with servicing the machine, death or serious personal injury can result. When in doubt the work should be done by a Yamaha dealer or other qualified mechanic.

NOTICE

Yamaha Golf-Car Company does not approve the use of high-pressure washers to clean the products they manufacture. Doing so may damage the finish on the body or result in doing other damage not covered by warranty.

CS - CHECK CA - CHECK AND ADJUST R - REPLACE S - SERVICE CL - CLEAN AND LUBRICATE L - LUBRICATE

	Remarks	Daily Pre-Operation	40 rounds	250 rounds	500 rounds	1000 rounds	2000 rounds	Page
			20 hours 100 miles 160 kms (Every Month)	125 hrs 600 mls 1000 kms (Every 6 months)	250 hrs 1200 mls 2000 kms (Every Year)	500 hrs 2500 mls 4000 kms (Every 2 years)	1000 hrs 5000 mls 8000 kms (Every 4 years)	
PRE-OP	Charge	S	S	S	S	S	S	13, 30
	Clean battery tops, check for tightness of hold-down screws and terminals	S	S	S	S	S	S	20, 27
	Check brake pedal freeplay and adjust if necessary	CS	CA	CA	CA	CA	CA	21, 48
	Check steering operation	CS	CS	CS	CS	CS	CS	21
	Check tire pressure, tread depth, tire surface for damage	CS	CA	CA	CA	CA	CA	20

* Items without a page number reference should be serviced by a Yamaha dealer or other qualified mechanic. This manual does not contain these procedures. They are contained in the Service Manual.

** Flooded Batteries only

*** Do no operate vehicle if discrepancy is found.

MAINTENANCE AND ADJUSTMENT

CS - CHECK CA - CHECK AND ADJUST R - REPLACE S - SERVICE CL - CLEAN AND LUBRICATE L - LUBRICATE

	Remarks	Daily Pre-Operation	40 rounds 20 hours 100 miles 160 kms (Every Month)	250 rounds 125 hrs 600 mls 1000 kms (Every 6 months)	500 rounds 250 hrs 1200 mls 2000 kms (Every Year)	1000 rounds 500 hrs 2500 mls 4000 kms (Every 2 years)	2000 rounds 1000 hrs 5000 mls 8000 kms (Every 4 years)	Page
PRE-OP	Check body and chassis for damage	CS	CS	CS	CS	CS	CS	22
	Check tightness of all bolts, nuts, screws and rivets	CS	CS	CS	CS	CS	CS	*
	Check reverse alarm operation	CS	CS	CS	CS	CS	CS	21
	Check for the proper operation of pedal control area ***	CS	CS	CS	CS	CS	CS	21
EVERY MONTH	Check electrolyte level **		CS	CS	CS	CS	CS	27
	Check for loose or broken connections		CS	CS	CS	CS	CS	*
	Clean/Lube pedal control area		CL	CL	CL	CL	CL	21
EVERY 6 MONTHS	Check all wire insulation for cracks and/or worn spots			CS	CS	CS	CS	*
	<ul style="list-style-type: none"> • Check brake cable operation • Inspect for abrasions and damage, and replace if necessary 			CS R	CS R	CS R	CS R	48
	Check shock absorbers for oil leaks and damaged springs			CS	CS	CS	CS	*
EVERY YEAR	Perform a discharge test				S	S	S	*
	Apply battery Terminal protectant				S	S	S	—

* Items without a page number reference should be serviced by a Yamaha dealer or other qualified mechanic. This manual does not contain these procedures. They are contained in the Service Manual.

** Flooded Batteries only

*** Do not operate vehicle if discrepancy is found.

MAINTENANCE AND ADJUSTMENT

CS - CHECK CA - CHECK AND ADJUST R - REPLACE S - SERVICE CL - CLEAN AND LUBRICATE L - LUBRICATE

	Remarks	Daily Pre-Operation	40 rounds 20 hours 100 miles 160 kms (Every Month)	250 rounds 125 hrs 600 mls 1000 kms (Every 6 months)	500 rounds 250 hrs 1200 mls 2000 kms (Every Year)	1000 rounds 500 hrs 2500 mls 4000 kms (Every 2 years)	2000 rounds 1000 hrs 5000 mls 8000 kms (Every 4 years)	Page
EVERY YEAR	Check rear axle bearing play for roughness or freeplay				CS	CS	CS	*
	Check steering knuckle bushing freeplay / Adjust wheel alignment				CA	CA	CA	*
	Check wheel nut tightness, front wheel bearing play				CS	CS	CS	*
	Check transaxle oil level and inspect for leakage				CS	CS	CS	46
	Adjust parking brake release				CA	CA	CA	49
	Inspect pedal components ***				CS	CS	CS	*
EVERY 4 YEARS	Replace transaxle oil						R	*
	Inspect brake shoes and adjust or replace if necessary						CA	*

* Items without a page number reference should be serviced by a Yamaha dealer or other qualified mechanic. This manual does not contain these procedures. They are contained in the Service Manual.

** Flooded Batteries only

*** Do no operate vehicle if discrepancy is found.

TIP

Some maintenance items need more frequent service if you drive in unusually wet, dusty, sandy, or muddy areas.

MAINTENANCE AND ADJUSTMENT

BATTERY CARE

For Flooded Batteries

WARNING

Battery electrolyte is poisonous and dangerous, causing severe burns, etc. It contains sulfuric acid. Avoid contact with skin, eyes, or clothing.

Antidote:

EXTERNAL: Flush with water.

INTERNAL: Drink large quantities of water or milk. Follow with milk of magnesia, beaten egg, or vegetable oil. Call physician immediately.

EYES: Flush with water for 15 minutes and get prompt medical attention.

Batteries produce explosive gases.

Keep sparks, flame, cigarettes, etc., away.

Ventilate when charging or using in enclosed space. Always shield eyes when working near batteries.

KEEP OUT OF REACH OF CHILDREN.

Six 8-volt deep cycle batteries provide power for your vehicle and must be properly maintained and recharged for maximum performance and service life.

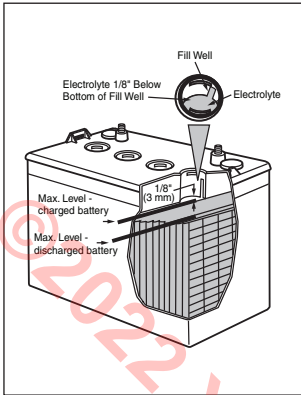
To maintain your batteries:

1. Clean the tops of the batteries with a solution of baking soda and water, as necessary, to remove corrosion.

NOTICE

Do not allow cleaning solution to enter battery cells. Serious battery damage can result.

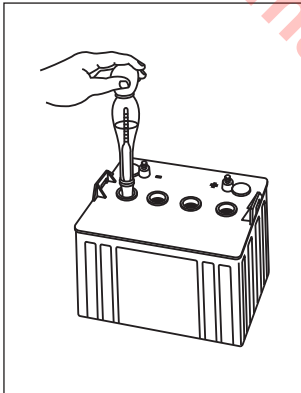
MAINTENANCE AND ADJUSTMENT



2. Check the fluid level before and after charging.
 - **Before charging:** Only add distilled water if fluid is below the top of the plates, and then add just enough to cover plates.
 - **After charging:** Open the vent caps and look inside the fill wells. Add distilled water until the electrolyte level is 3 mm (1/8") below the bottom of the fill well. A piece of rubber can be used safely as a dipstick to help determine this level. Clean, replace and tighten all vent caps.

NOTICE

Normal tap water contains minerals which are harmful to a battery; therefore, refill only with distilled water.



3. Using a hydrometer, check the specific gravity of the battery fluid in each cell against the readings on the chart below. Consult a Yamaha dealer if any low readings are found, or if readings vary more than one point between cells.

Temperature		Satisfactory Uncorrected Hydrometer Reading
°C	°F	
48.9	120	1.244
43.3	110	1.248
37.8	100	1.252
32.2	90	1.256
26.7	80	1.260
21.1	70	1.264
15.6	60	1.268
10.0	50	1.272
4.4	40	1.276
-1.1	30	1.280

MAINTENANCE AND ADJUSTMENT

For AGM Batteries (Optional)

WARNING

Battery electrolyte is poisonous and dangerous, causing severe burns, etc. It contains sulfuric acid. Avoid contact with skin, eyes, or clothing.

Antidote:

EXTERNAL: Flush with water.

INTERNAL: Drink large quantities of water or milk. Follow with milk of magnesia, beaten egg, or vegetable oil. Call physician immediately.

EYES: Flush with water for 15 minutes and get prompt medical attention.

Batteries produce explosive gases.

Keep sparks, flame, cigarettes, etc., away.

Ventilate when charging or using in enclosed space. Always shield eyes when working near batteries.

KEEP OUT OF REACH OF CHILDREN.

Six 8-volt deep cycle AGM batteries provide power for your electric vehicle and must be properly recharged for maximum performance and service life.

MAINTENANCE AND ADJUSTMENT

BATTERY CHARGING

⚠ WARNING

Read and understand the owner's manual provided with your four-passenger vehicle's battery charger before charging batteries. Death or serious personal injury can result from failing to comply with the safety instructions in this manual.

⚠ WARNING

Explosive hydrogen gas is produced while batteries are being charged. Only charge batteries in well-ventilated areas (a minimum of five air changes per hour is recommended). Death or serious personal injury can result from failing to comply with the safety instructions in this manual.

To charge the batteries in your vehicle, follow the instructions contained in your battery charger's owner's manual. The following is a summary of the charging steps.

NOTICE

Do not attempt to recharge your vehicle's batteries without thoroughly reading and understanding the owner's manual provided with your charger.

1. Turn main switch key to "OFF" position.

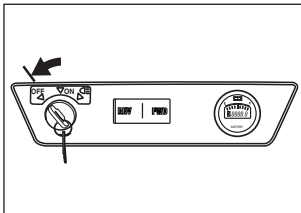
NOTICE

Always put the tow switch in the TOW position before charging battery or damage to the electrical system may result.

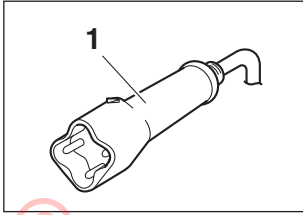
2. Lift up the seat and move the tow switch to the TOW position.

NOTICE

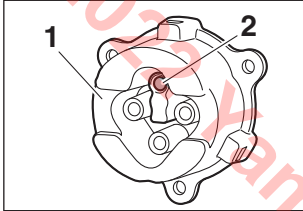
Use only battery chargers that are rated for use with 48-volt Yamaha vehicles. Serious battery damage can result. Thoroughly read and understand the user manual supplied with your 48-volt charger.



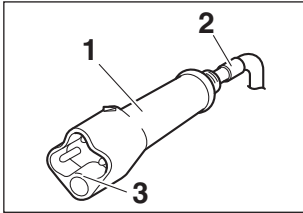
MAINTENANCE AND ADJUSTMENT



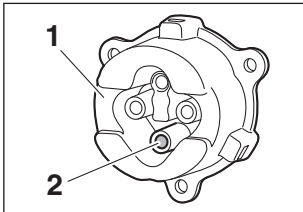
1. DC output plug for Flooded batteries



1. Receptacle for Flooded batteries
2. Dummy pin



1. DC output plug for AGM batteries (Optional)
2. Identification wrap (Red)
3. Rib



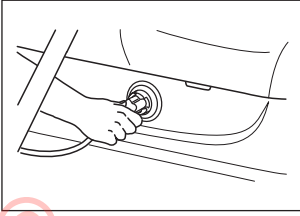
1. Receptacle for AGM batteries (Optional)
2. Dummy pin

3. Check the DC output code and plug for damage.

TIP

The location of the dummy pin is different between the flood battery and the AGM battery (Optional).

MAINTENANCE AND ADJUSTMENT



4. With the charger properly connected and grounded (see charger's owner's manual), insert the DC output into the DC charger receptacle.

! WARNING

Do not disconnect the DC output cord from the DC charger receptacle when the charger is on or an arc could occur that may cause an explosion.

NOTICE

Do not insert the DC plug into receptacle of the wrong battery type. DC plug or receptacle damage can result. See the identification procedure on page 30.

5. The charger will turn off automatically when the batteries reach full charge.
6. After the charger has turned off, disconnect the DC output plug from the DC charger receptacle by grasping the plug body and pulling the plug straight out of the receptacle.

MAINTENANCE AND ADJUSTMENT

BATTERY INSTALLATION

⚠ WARNING

When working with batteries, do not put wrenches or other metal objects across the battery terminals. An arc can occur causing an explosion or fire at the battery.

For Flooded Batteries

1. Install the battery holddown plates and torque to 7-9 N·m (0.7-0.9 kgf·m, 5.2-6.6 lb·ft) as shown.
2. Connect the wire leads and torque to 9-10 N·m (0.9-1.0 kgf·m, 6.6-7.4 lb·ft) as shown.

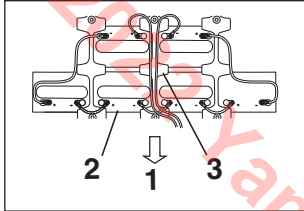
⚠ WARNING

When installing batteries:

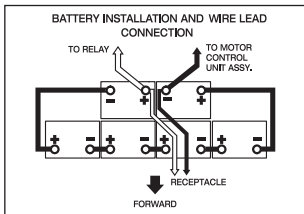
- Carefully place battery cables and hold-downs making sure that cables do not lay across vent caps.
- Always remove the negative (-) cable to the motor controller first and install it last. A spark can occur causing an explosion or fire at the battery.

NOTICE

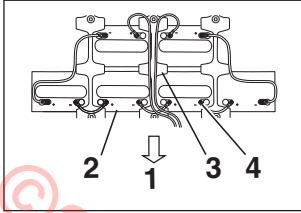
Do not over-tighten the battery holddown nuts. Excessive force will damage the battery casing.



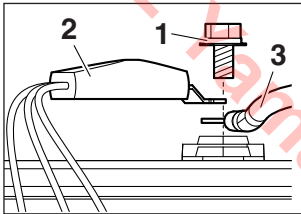
1. Forward
2. Battery
3. Battery hold-down plate



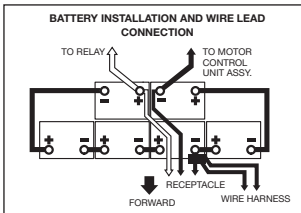
MAINTENANCE AND ADJUSTMENT



1. Forward
2. Battery
3. Battery hold-down plate
4. Temperature sensor



1. Bolt
2. Temperature sensor
3. Battery cable



For AGM Batteries (Optional)

1. Install the battery hold-down plates and torque to 7-9 N·m (0.7-0.9 kgf·m, 5.2-6.6 lb·ft) as shown.
2. Install the temperature sensor between the wire terminal and flat washer in correct place and then tighten the terminal connecting bolts to 9-10 N·m (0.9-1.0 kgf·m, 6.6-7.4 lb·ft) as shown.

⚠ WARNING

When installing batteries:

- Carefully place battery cables and hold-downs making sure that cables do not lay across vent caps.
- Always remove the negative (-) cable to the motor controller first, and install it last. A spark can occur causing an explosion or fire at the battery.

NOTICE

Do not over-tighten the battery hold-down nuts. Excessive force will damage the battery casing.

MAINTENANCE AND ADJUSTMENT

FUSE REPLACEMENT

WARNING

Be sure to use the specified fuse. Using a wrong fuse can cause electrical system damage and create a fire hazard. Death or serious personal injury can result from failing to comply with the safety instructions in this manual.

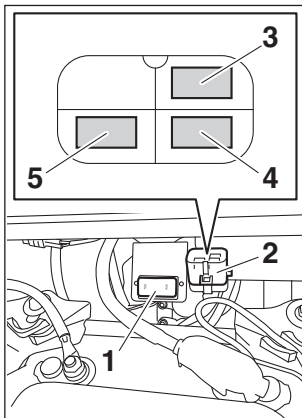
NOTICE

When replacing a fuse be sure the main switch is turned off to prevent accidental short-circuiting and electrical system damage. Put tow switch in the tow position.

The fuse holder is located under the seat. (next to the tow switch)

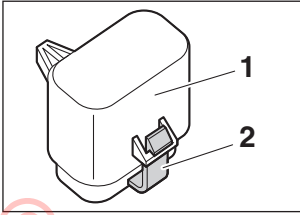
To access the fuse holder

1. Lift up the seat (see page 19).
2. Locate the fuse holder next to the tow switch.



1. Tow switch
2. Fuse holder
3. USB Mini fuse (5.0A 32V)
4. Main Mini fuse (10.0A 58V)
5. MCU Mini fuse (3.0A 58V)

MAINTENANCE AND ADJUSTMENT



1. Fuse holder cover
2. Locking tab

3. Depress the locking tab of the fuse holder, and then remove the fuse holder cover.
4. Pull the fuse out and inspect it. Replace the fuse if necessary.
5. Install the fuse holder cover.
6. Close the seat.

BATTERY CHARGER

Prepare for Emergencies

Be prepared for possible injury or fire.

Keep the following items handy:

- First aid kit
- Fire extinguisher
- Emergency phone numbers

Read the text located on the case of the charger before operating or using the charger.

Features

Switch-Mode Design: High efficiency operation with smooth, ripple-free DC output.

10-LED Display: Displays state of charge and charge error conditions.

Charge Protection: Protects from improper connection, overload and excessive temperatures.

Programmed safety features include charge time monitoring and over temperature protection.

Charge Algorithm: Designed for maximum battery life of Trojan 48V batteries.

Pre-Test: Performs several diagnostic tests before charging begins.

Multi-Charge Steps: Ensures a consistent and repeatable charge.

Step 1: Pre-test: Tests several conditions before charging begins. If a problem is detected, charging is terminated.

Step 2: Constant Current Step: Battery is charged with full rated output current, restoring up to 80% of charge.

MAINTENANCE AND ADJUSTMENT

Step 3: Constant Voltage Step: Regulated voltage “equalizes” individual battery cells, resulting in full charge delivered to the battery.

Step 4: Topping Off Step: Battery pack is brought slowly to full charge without excess gassing.

Step 5: Storage: Every 14th day and if voltage becomes less than 48V, charger restarts cycle to refresh batteries in storage.

Automatic Battery Equalization (Boosting): Automatically boosts battery pack when individual cell-voltages are not balanced and restores pack capacity.

INSTALLATION

The AC line connected to the charger must be capable of supplying 12 Amperes to the charger. **AVOID** connecting a charger and another device to a single 15A/20A circuit or the circuit may become overloaded.

Also, maximum Ampere varies depending on AC voltage. Please refer to “AC Input” in General Specifications.

WARNING

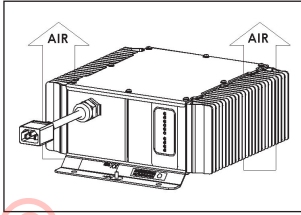
RISK OF FIRE - Use this charger only on circuits with a 15-amp or higher branch circuit protection (circuit breaker or fuse) in accordance with the national electrical code, ANSI/NFPA 70 and all applicable local codes and ordinances.

When using an extension cord, use only a grounded, 3-wire, 12-AWG cord no longer than 15 m (50 ft.). The use of an improper extension cord could result in a risk of a fire or electric shock.

WARNING

The output of chargers with greater than 48 volts may pose an energy and/or shock hazard under normal use.

MAINTENANCE AND ADJUSTMENT



MOUNTING

⚠ WARNING

This charger is not designed for on-board use. Improper mounting or installation could result in a risk of fire or damage to the vehicle.

Mount the charger on a shelf or on the wall with adequate ventilation.

Ideally it will be mounted horizontally with airflow from below. If it will be mounted vertically, it is recommended that the AC-input cord be at the lower end of the charger.

Keep the charger free of oil, dirt, mud or dust to keep the cooling fins operating as efficiently as possible.

Mount the charger by the mounting plate using appropriate fasteners.

TIP

The charger's AC plug must be located at least 46 cm (18 in.) above the ground and the display visible to the user.

⚠ WARNING

Chargers can ignite flammable materials and vapors. Do not use near fuels, grain dust, solvents or other flammables.

MAINTENANCE AND ADJUSTMENT

GROUNDING

The battery charger must be grounded to reduce the risk of electric shock. The charger is equipped with a 3-prong AC cord set. The AC cord set must be connected to an appropriate receptacle that is properly installed and grounded in accordance with the National Electrical Code and all local codes and ordinances.

WARNING

Improper connection of the equipment-grounding conductor can result in a risk of an electric shock.

The conductor with insulation that has an outer surface that is green, with or without yellow stripe(s), is the equipment-grounding conductor. If repair or replacement of the charger's AC cord set is necessary, do not connect the equipment-grounding connector to a live terminal.

CHARGING

WARNING

To reduce the risk of an electric shock, connect only to a properly grounded, single-phase (3-wire) outlet. Also, refer to grounding instructions.

WARNING

Risk of electric shock! Do not touch any uninsulated parts of the charger output plug, DC charger receptacle or battery terminals.

WARNING

Surfaces may be hot. To avoid risk of burns, do not touch.

NOTICE

Charge only 48-volt battery systems manufactured by Trojan Battery Company. Damage to the charger and batteries may result if this charger is used on the wrong battery type.

MAINTENANCE AND ADJUSTMENT

WARNING

Visually and manually inspect to verify that the DC output cord, plug and battery charging receptacle are in good working condition before each and every use. Do not use the charger under any of the following conditions:

- The DC charging receptacle does not grip the DC cord set plug tightly, is loose or does not make a good electrical connection.
- The DC cord set plug or charging receptacle feels hotter than normal.
- The DC cord set plug or charging receptacle contacts are bent, corroded, or are dark or bluish in appearance.
- The DC cord set plug, cords, receptacle or equipment-charging wiring are cut, worn, broken or have any exposed conductors.
- The DC cord plug, cords, charger or receptacles are damaged or distressed in any way.

Using the charger with any of the above symptoms could result in a fire, property damage or personal injury.

WARNING

Do not disconnect the DC cord set plug from the DC charger receptacle when the charger is on. If the charger must be stopped, first disconnect the AC power supply cord from its AC outlet, and then disconnect the charger DC cord set plug from the DC charger receptacle.

WARNING

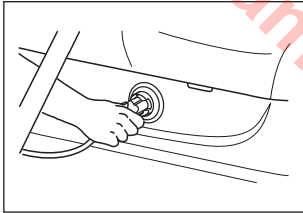
Whenever removing AC or DC cord set plugs from receptacles, pull from the plug body and not from their respective cords.

MAINTENANCE AND ADJUSTMENT

The instructions printed on the charger (shown below) are for daily reference. The charger is factory preset for use with Trojan 48-volt golf car batteries.

OPERATING INSTRUCTIONS

1. PLUG AC CORD INTO A GROUNDED RECEPTACLE
2. PLUG DC CORD INTO DC CHARGER RECEPTACLE
3. CHARGE CYCLE WILL BEGIN AFTER A FEW SECONDS AND AMMETER WILL TURN ON
4. CHARGER SHUTS OFF AUTOMATICALLY WHEN BATTERIES ARE CHARGED

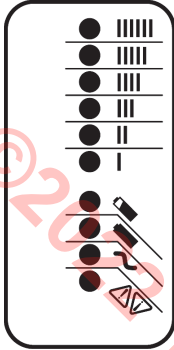







Connect charger's AC cord set to AC power. Then, connect the DC cord set plug to the vehicle charging receptacle by grasping the plug handle and pushing the plug straight into the DC charger receptacle. The charger will start automatically.

Upon connection to AC power source, the lower four LEDs come on as a Power-On Self-Test, then the AC power LED turns on. Upon connection to battery pack, output indicators turn on to indicate charging is active.

MAINTENANCE AND ADJUSTMENT

Under normal charge circumstances, the LEDs operate as follows:



Ammeter (Amber) 	On:	Displays approximate scale of current output during Step 2.
	Blinking:	High internal charger temperature. Current output reduced.
80% Charge (Amber) 	On:	80% charged, Step 2 complete. Begin Step 3.
	Blinking:	With no battery connected, indicates algorithm # selected by number of flashes at startup.
100% Charge (Green) 	On:	Charging complete. Charger in Storage Mode.
	Blinking:	Step 3 complete. Begin Step 4.
AC On (Amber) 	On:	AC power good.
Fault (Red) 	Blinking:	Charger error. Refer to Troubleshooting on next page.

To reset charger after 100% charge (Green LED), disconnect the DC plug from battery for more than 30 seconds. Then, reconnect DC plug.

MAINTENANCE AND ADJUSTMENT

TROUBLESHOOTING

1. LED Error Codes (For Battery Condition)

WARNING

Incorrect reassembly may result in a risk of electric shock or fire. The following procedures are intended only to determine if a malfunction may exist in the charger.

WARNING





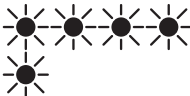
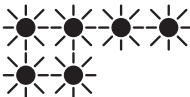
To reduce the risk of electric shock, always disconnect the charger's AC cord set plug from AC power and its DC cord set plug from batteries before attempting any maintenance or cleaning.

WARNING

Do not operate the charger if it is malfunctioning. Personal injury or property damage could result.

MAINTENANCE AND ADJUSTMENT

If a fault occurs, count the number of red flashes between pauses and refer to the table below:

Red Flashes	Cause	Solution
	Battery High Voltage	Check battery size and condition and reset charger (interrupt DC connection for 15 seconds).
	Battery Low Voltage	Check battery size and condition and reset charger (interrupt DC connection for 15 seconds).
	Charge Timeout caused by battery pack not reaching required voltage.	Check connections.
	Charger output was reduced due to high temperatures.	Operate charger at a lower ambient temperature.
	Check Battery: Battery could not be trickle charged up to minimum voltage.	Check for shorted or damaged cells.
	Check Temperature Sensor: Missing, defective, or damaged temperature sensor. (For AGM)	Check for loose temperature sensor connections. Check for damaged temperature sensor. Replace, if necessary. (For AGM)
	Over-Temperature: Charger shut down due to high internal temperature.	Ensure sufficient cooling air flow and reset charger (interrupt DC connection for 15 seconds).
	Charger Internal Fault	Reset charger (interrupt AC power for 15 seconds). Return to qualified service depot if fault persists.

7

WARNING

Have qualified service technician inspect if problems persist.

MAINTENANCE AND ADJUSTMENT

2. Hardware System Faults

Problem Description	Cause	Remedy
Charger does not start. No LEDs illuminate or blink when AC cord is connected.	No AC power to charger.	Ensure correct voltage at AC outlet. Check AC cord connections. Replace AC cord if damaged.
Charger does not start charging when DC cord set is plugged into charger receptacle and the Amber AC On LED is illuminated.	Incorrect wiring or disconnection from DC cord, charger receptacle and batteries. Battery voltage less than 20 Volts.	Ensure polarity for wiring is correct from DC cord, charger receptacle and batteries. Check battery pack voltage.
Charger runs longer than 20 hours.	Charger may be in “boosting” stage.	Confirm Green 100% LED is blinking. (This indicates boosting.)

WARNING

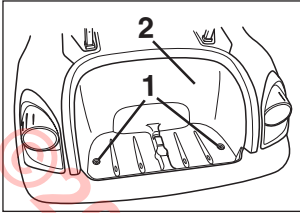
Have qualified service technician inspect if problems persist.

MAINTENANCE AND ADJUSTMENT

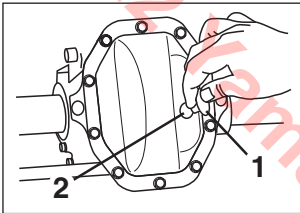
TRANSAXLE OIL

To check transaxle oil level:

1. Place the vehicle on a flat, level surface.
2. Remove two bolts and remove the rear floor cover.
3. Place an oil pan under the transaxle case.



1. Bolt
2. Rear floor cover



1. Oil level plug
2. Oil level plug hole

4. Clean the area around the oil level plug and then remove the plug.

NOTICE

Do not allow foreign material to enter transaxle. Serious transaxle damage can result.

5. The oil level should be up to the brim of the transaxle oil level hole.
6. If needed, add gear oil until it starts to flow from the oil level plug hole.

Recommended oil brand:



Available viscosity index:

SAE 80W-90 or SAE 90

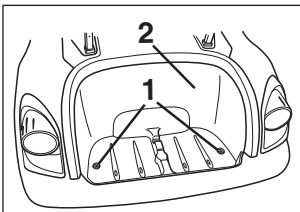
Transaxle oil change quantity:

355 cc (355 ml, 0.38 US qt)

7. Allow excess gear oil to flow out of the hole until it stops.
8. Install the oil level plug.
9. Install the rear floor cover and secure with two bolts.

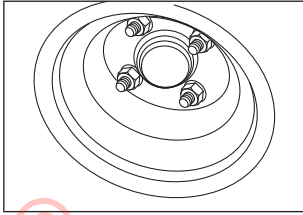
TIP

For transaxle oil replacement, consult a Yamaha dealer or other qualified mechanic.



1. Bolt
2. Rear floor cover

MAINTENANCE AND ADJUSTMENT



WHEEL REPLACEMENT

WARNING

Before performing wheel or brake maintenance, verify that the main switch is in the “OFF” position. Accidental starting of the vehicle could cause the vehicle to move, causing death or serious personal injury.

To remove and install a wheel on your four-passenger vehicle:

1. With the wheels blocked to prevent the vehicle from moving, loosen the wheel nuts.
2. Elevate the vehicle with a suitable jack and remove the wheel nuts and the wheel.
3. Reverse the removal steps when installing the wheel.

Wheel nut tightening torque:
100 N·m (10 kgf·m, 74 lb·ft)

MAINTENANCE AND ADJUSTMENT

BRAKE ADJUSTMENT

The brakes on your vehicle are selfadjusting.

Before you operate the vehicle, press down on the brake pedal several times to make sure the brakes are functioning properly.

WARNING

Consult your Yamaha dealer before using your vehicle if you suspect brake problems. Brake failure could result in a serious accident.

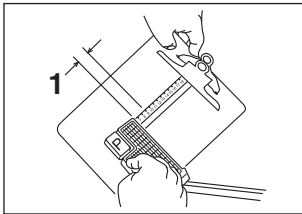
Death or serious personal injury can result from failing to comply with the safety instructions in this manual.

BRAKE PEDAL FREE PLAY ADJUSTMENT

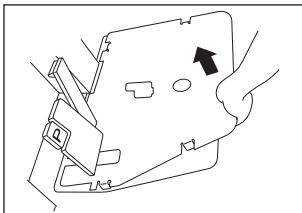
Check the brake pedal free play by pressing against the pedal with two fingers (using light force) and measuring the distance the pedal travels before resistance is felt.

Brake pedal free play:

50-55 mm (1.97-2.17 in.)



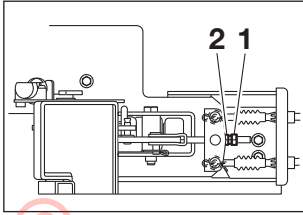
1. Brake pedal free play



To adjust the brake pedal free play:

1. Remove the floor mat and service lid from the floor of the vehicle.

MAINTENANCE AND ADJUSTMENT



1. Locknut
2. Adjusting nut

2. If the free play distance needs adjusting, loosen the lock nut and turn the adjusting nut in or out until the free play specification is met. Then tighten the lock nut in place.

⚠ WARNING

Do not over-tighten the brake cables. Over-tightening will increase brake wear and affect overall performance of the vehicle.

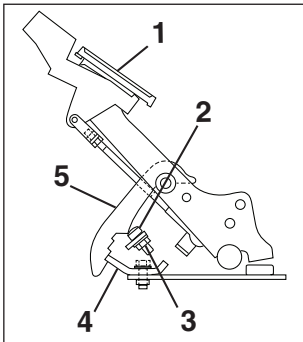
Premature brake wear can result.

Death or serious personal injury can result from failing to comply with the warning labels in this manual.

PARKING BRAKE RELEASE ADJUSTMENT

NOTICE

Before performing parking brake release adjustment, adjust brake pedal free play.



1. Parking brake pedal
2. Bolt
3. Locknut
4. Brake nail
5. Sector

1. Apply pressure to the parking brake pedal until the brake nail catches the first latch position on the sector.
2. Loosen the locknut and turn the bolt counterclockwise until it contacts the sector.
3. Turn the bolt clockwise 1/3 of a turn (120 degrees), then tighten locknut.

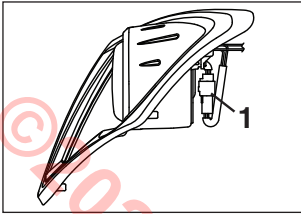
MAINTENANCE AND ADJUSTMENT

REPLACING A HEADLIGHT UNIT

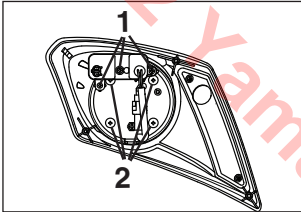
This model is equipped with LED-type headlights.

If a headlight does not come on, replace it as follows:

1. Disconnect the wire connector from the headlight assembly.

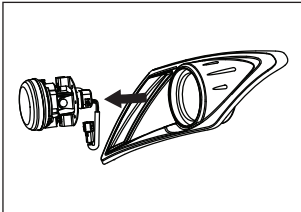


1. Wire connector



1. Screws (three)
2. Screws (four)

2. Remove the three screws and remove the light control unit.
3. Remove the four screws to remove the headlight assembly from the holder.
4. Remove the headlight assembly from the holder.
5. Install new headlight assembly into holder and secure with the four screws.
6. Install the light control unit and fasten with three screws.
7. Connect the wire connector to the headlight assembly.



MAINTENANCE AND ADJUSTMENT

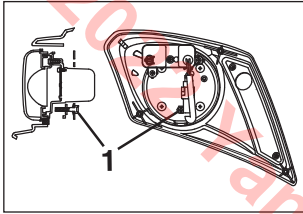
ADJUSTING A HEADLIGHT

NOTICE

It is recommended to have the headlight adjustment performed by a Yamaha dealer.

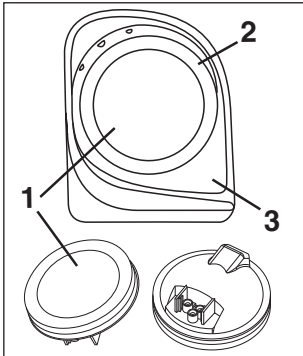
TIP

The screw can be accessed from under the fender.



1. Adjusting screw

1. Using a Phillips head screwdriver, turn the adjusting screw.
2. Turning the screw clockwise will lower the beam and turning the screw counter-clockwise will raise the beam.



1. Bulb assembly
2. Rubber grommet
3. Bezel assembly

REPLACING A TAILLIGHT UNIT

1. If a taillight does not come on, replace the Taillight unit removing the rubber grommet from the bezel assembly.
2. Remove the wire connector, replace the taillight unit, and reinstall by fitting the rubber grommet over the taillight unit and bezel.

Perform the following preparations when storing your vehicle for extended periods of time.

NOTICE

Yamaha Golf-Car Company does not approve the use of high-pressure washers to clean the products they manufacture. Doing so may damage the finish on the body or result in doing other damage not covered by warranty.

TIP

Turn main switch key to “OFF” position, lift seat and put the tow switch in the “TOW” position. Remove key from main key switch, and store key in a safe place.

CHASSIS PREPARATION

1. Verify the tire pressure is set to 151 kPa (1.55 kgf/cm², 22 psi).
2. Clean exterior of the four-passenger vehicle and apply a rust inhibitor.
3. Cover the vehicle with a breathable cover and store it in a dry, well-ventilated area.

BATTERY PREPARATION

1. Recharge the batteries and check the fluid levels at least once a month.

NOTICE

Do not allow cleaning solution to enter battery cells. Serious battery damage can result.

2. Clean the tops of the batteries with a solution of baking soda and water, as necessary, to remove corrosion.

SPECIFICATIONS

GENERAL SPECIFICATIONS

Items	DR2 4PA POWERTECH AC
Dimensions:	
Overall length	3230 mm (127.2 in.)
Overall width	1200 mm (47.2 in.)
Overall height (steering height)	1230 mm (48.4 in.)
Overall height (sun top height)	1815 mm (71.5 in.)
Height of floor	325 mm (12.8 in.)
Wheelbase	2490 mm (98.0 in.)
Tread:	
Front	885 mm (34.8 in.)
Rear	975 mm (38.4 in.)
Ground clearance	140 mm (5.5 in.)
Weight:	
Curb weight (With Sun top, W/S, Flooded Battery)	564 kg (1243 lb)
Curb weight (With Sun top, W/S, AGM Battery)	602 kg (1327 lb)
Performance:	
Maximum speed	31.4 km/h (19.5 mph)
Maximum reverse speed	10.0 km/h (6.2 mph)
Minimum turning radius	4.4 m (14.4 ft)
Seating capacity	Two occupants per seat, four occupants maximum

TRANSMISSION

Items	DR2 4PA POWERTECH AC
Differential/reduction gear	Secondary reduction system helical gear Secondary reduction ratio: Forward/Reverse 12.44:1 Differential type bevel gear Lubricant/capacity SAE 80W-90 or SAE 90 gear oil/355 cc (355 mL; 0.38 US qt)

SPECIFICATIONS

BATTERIES

Items	DR2 4PA POWERTECH AC
Flooded battery:	Trojan - T-875 (6x8-volt) RC: minimum 117 min
AGM battery: (Optional)	Trojan - T-875 AGM (6x8-volt) RC: minimum 118 min

CHASSIS

Items	DR2 4PA POWERTECH AC
Suspension:	
Front	Independent (Coil-over strut type)
Rear	Pivoted trailing arm (mono-link)
Steering system:	
Type	Rack and pinion
Steering angle (L.H.)	1.85 turn
Steering angle (R.H.)	1.85 turn
Brakes:	
Brake system	Mechanical drum brake on each rear wheel with self-adjusters
Type of brake	Dual internal expanding shoe Leading/trailing shoes (self-adjusting)
Brake pedal freeplay linkage adjustment	50-55 mm (1.97-2.17 in.)
Parking brake	
Type	Foot type; parking brake with automatic release
Wheel	
Tire size: (Width [mm]) / (Aspect ratio)-(Rim size [in]) Ply rating)	
Front	205 / 65 - 10 4 PR
Rear	205 / 65 - 10 4 PR
Rim size: (Dia. [in]) × (Width [in]) (Offset [mm])	10 × 6.0 +6
Tire pressure:	151 kPa (1.55 kgf/cm ² , 22 psi)

SPECIFICATIONS

Items	DR2 4PA POWERTECH AC
Lights:	
Headlight	LED
Taillight	12 V BULB

GENERAL SPECIFICATIONS (BATTERY CHARGER)

DC Output – see Operating Instructions

Voltage - nom (V)	48
Voltage - max (V)	67.2
Current - max (A)	18
Battery Type	Specific to selected algorithm
Reverse Polarity	Electronic protection – auto-reset
Short Circuit	Electronic current limit

AC Input

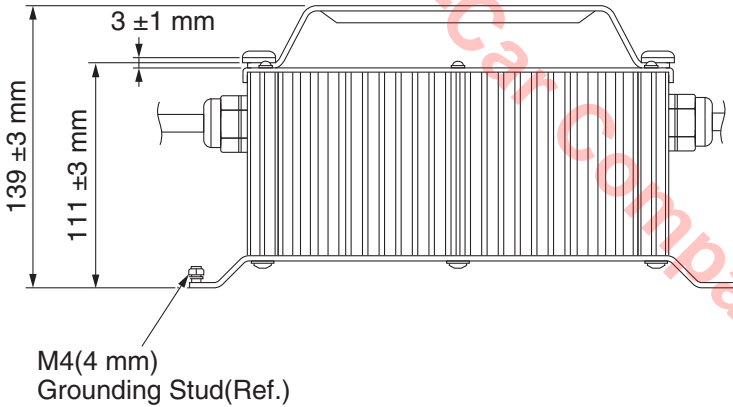
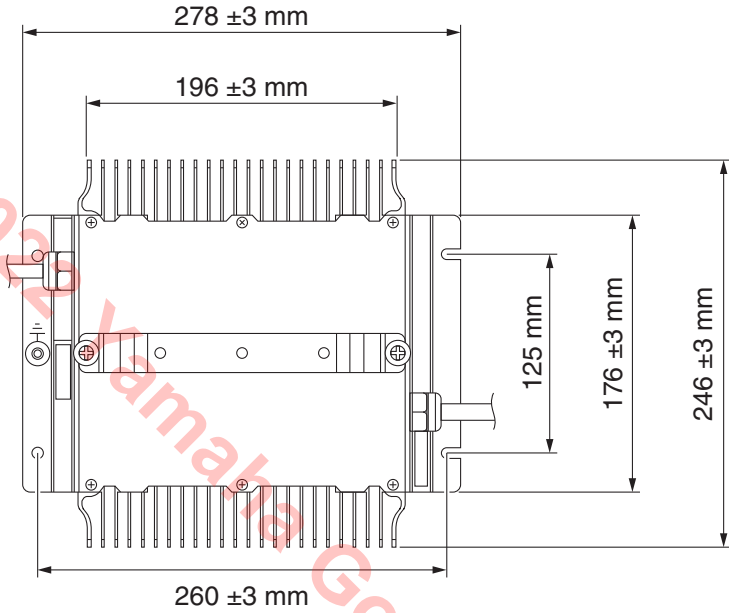
Voltage - max (Vrms)	85-265
Frequency (Hz)	45-65
Current - max (Arms)	12A @ 100VAC / 11.5A @ 110VAC / 6.1A @ 200VAC / 5.6A @ 220VAC / 5.4A @ 230VAC / 5.1A @ 240VAC
Current - nom (Arms)	10A @ 120VAC / 6A @ 200VAC / 5.5A @ 220VAC
AC Power Factor	>0.98 at nominal input current

Mechanical

Dimensions	28.0 × 24.5 × 14.0 cm (11 × 9.7 × 5.5 in.)
Weight	<5 kg (12 lbs)
Environmental	Enclosure: IP20
Operating Temperature	-30°C to +50°C (-22°F to 122°F), derated above 30°C, below 0°C
Storage Temperature	-40°C to +70°C (-40°F to 158°F)
AC Input Connector	IEC320/C14 (require ≥ 1.8 m localized cord)
DC output connector	OEM specific w/12AWG wire

SPECIFICATIONS

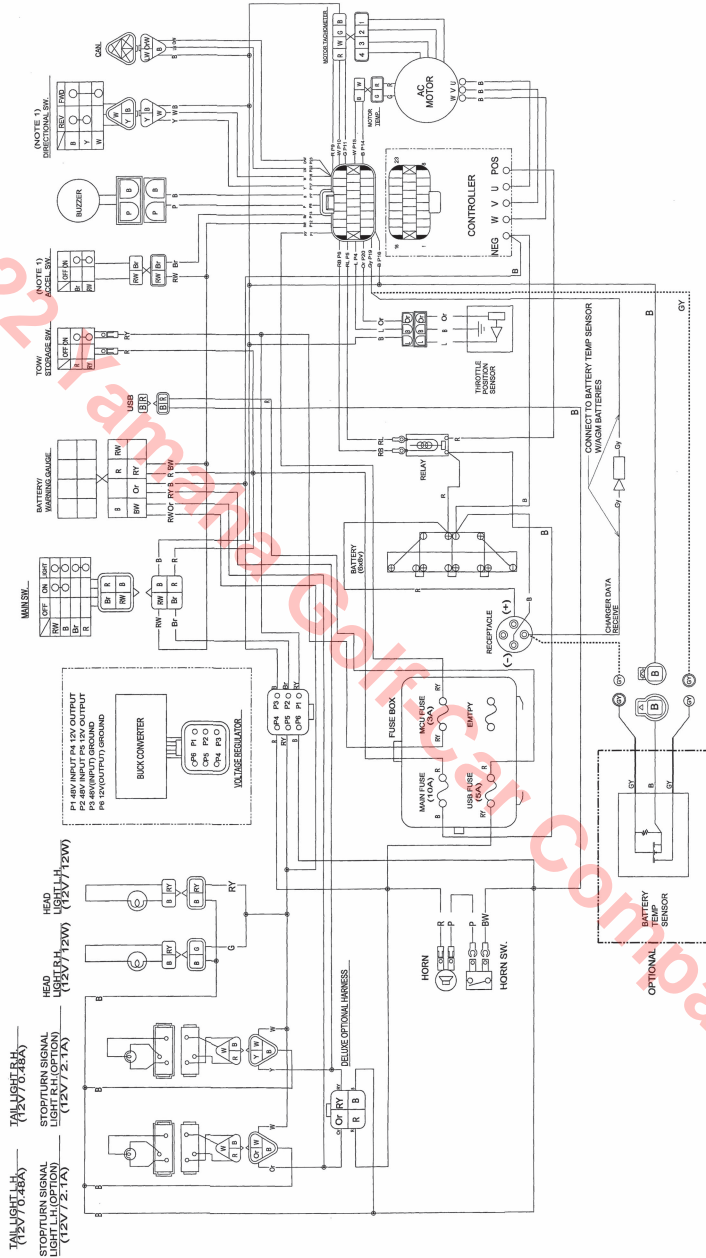
MECHANICAL DRAWINGS (BATTERY CHARGER)



WIRING

WIRING DIAGRAM

- NOTES:
 1. PREVIOUS METAL CONTACTS ARE REQUIRED.
 2. PREVIOUS WIRING IS TO BE REMOVED.
 REFERENCE "WIRING DIAGRAM"
 NO. JOE-0F003-10.



10

©2022 Yamaha Golf-Car Company

CONTENTS

1 WARRANTY

2 IMPORTANT LABELS

3 ⚠ SAFETY INFORMATION

4 CONTROLS

5 PRE-OPERATION CHECKS

6 OPERATION

7 MAINTENANCE AND ADJUSTMENT

8 STORAGE

9 SPECIFICATIONS

10 WIRING

