

EXPEDITION EXPRESS+

Owner's Manual



SAMSON®

Important Safety Information



**AVIS
RISQUE DE CHOC ÉLECTRIQUE -
NE PAS OUVRIR**



This lightning flash with arrowhead symbol within an equilateral triangle is intended to alert the user to the presence of non-insulated “dangerous voltage” within the product’s enclosure that may be of sufficient magnitude to constitute a risk of electric shock.



The exclamation point within an equilateral triangle is intended to alert the user to the presence of important operating and maintenance instructions in the literature accompanying the appliance.

WARNING: TO REDUCE THE RISK OF ELECTRIC SHOCK, DO NOT REMOVE COVER (OR BACK) AS THERE ARE NO USER-SERVICEABLE PARTS INSIDE. REFER SERVICING TO QUALIFIED SERVICE PERSONNEL.



If you want to dispose this product, do not mix it with general household waste. There is a separate collection system for used electronic products in accordance with legislation that requires proper treatment, recovery and recycling.

Private household in the 28 member states of the EU, in Switzerland and Norway may return their used electronic products free of charge to designated collection facilities or to a retailer (if you purchase a similar new one).

For Countries not mentioned above, please contact your local authorities for a correct method of disposal.

By doing so you will ensure that your disposed product undergoes the necessary treatment, recovery and recycling and thus prevent potential negative effects on the environment and human health.

Copyright 2019, V1.2
Samson Technologies Corp.
278-B Duffy Ave
Hicksville, New York 11801
www.samsontech.com

The *Bluetooth*® word mark and logos are registered trademarks owned by Bluetooth SIG, Inc. and any use of such marks by Samson Technologies is under license. Other trademarks and trade names are those of their respective owners.”

Important Safety Information

1. Read these instructions.
2. Keep these instructions.
3. Heed all warnings.
4. Follow all instructions.
5. Do not use this apparatus near water.
6. Clean only with dry cloth.
7. Do not block any ventilation openings. Install in accordance with the manufacturer's instructions.
8. Do not install near any heat sources such as radiators, heat registers, stoves, or other apparatus (including amplifiers) that produce heat.
9. Do not defeat the safety purpose of the polarized or grounding type plug. A polarized plug has two blades with one wider than the other. A grounding type plug has two blades and a third grounding prong. The wide blade or the third prong are provided for your safety. If the provided plug does not fit into your outlet, consult an electrician for replacement of the obsolete outlet.
10. Protect the power cord from being walked on or pinched particularly at the plugs, convenience receptacles, and at the point where they exit from the apparatus.
11. Only use attachments/accessories specified by the manufacturer.
12. Use only with the cart, stand, tripod, bracket, or table specified by the manufacturer, or sold with the apparatus. When a cart is used, use caution when moving the cart/apparatus combination to avoid injury from tip-over.
13. Unplug the apparatus during lightening storms or when unused for long periods of time.
14. Refer all servicing to qualified personnel. Service is required when the apparatus has been damaged in any way, such as power supply cord or plug is damaged, liquid has been spilled or objects have fallen into the apparatus has been exposed to rain or moisture, does not operate normally, or has been dropped.
15. This appliance shall not be exposed to dripping or splashing water and that no object filled with liquid such as vases shall be placed on the apparatus.
16. Caution-to prevent electrical shock, match wide blade plug wide slot fully insert.
17. Please keep a good ventilation environment around the entire unit.
18. To prevent injury, this apparatus must be securely attached to the stand in accordance with the installation instructions.
19. **WARNING:** The battery (battery or batteries or battery pack) shall not be exposed to excessive heat such as sunshine, fire or the like.
20. **CAUTION:** Danger of explosion if battery is incorrectly replaced. Replace only with the same or equivalent type.
21. **WARNING:** The mains plug/appliance coupler is used as disconnect device, the disconnect device shall remain readily operable.
22. Battery disposal should be drawn to environmental aspects and should be according to local law requirements.
23. No naked flame sources, such as lighted candles, should be placed on the apparatus.



Important Safety Information

FCC Notice

1. This device complies with Part 15 of the FCC Rules. Operation is subject to the following two conditions:
 - (1) This device may not cause harmful interference.
 - (2) This device must accept any interference received, including interference that may cause undesired operation.
2. Changes or modifications not Expressly approved by the party responsible for compliance could void the user's authority to operate the equipment.

FCC Statement

This equipment has been tested and found to comply with the limits for a Class B digital device, pursuant to Part 15 of the FCC Rules. These limits are designed to provide reasonable protection against harmful interference in a residential installation.

This equipment generates uses and can radiate radio frequency energy and, if not installed and used in accordance with the instructions, may cause harmful interference to radio communications. However, there is no guarantee that interference will not occur in a particular installation. If this equipment does cause harmful interference to radio or television reception, which can be determined by turning the equipment off and on, the user is encouraged to try to correct the interference by one or more of the following measures:

- Reorient or relocate the receiving antenna.
- Increase the separation between the equipment and receiver.
- Connect the equipment into an outlet on a circuit different from that to which the receiver is connected.
- Consult the dealer or an experienced radio/TV technician for help.

RF Warning Statement

The device has been evaluated to meet general RF exposure requirement. The device can be used in fixed/mobile (min20cm) exposure condition without restriction.

This device complies with RSS-310 of Industry Canada. Operation is subject to the condition that this device does not cause harmful interference.

Hereby, Samson Technologies Corp., declares that this Expedition Express+ is in compliance with the essential requirements and other relevant provisions of Directive 2014/53/EU. The declaration of conformity may be consulted at:

http://www.samsontech.com/site_media/support/manuals/Expedition_Express_Plus_DOC.pdf

Introduction

Thank you for purchasing the Expedition Express+ battery-powered portable sound system, featuring wireless *Bluetooth*[®] connectivity, to stream audio from your smart phone, tablet, or computer. The Expedition Express+ is a complete all-in-one solution providing the flexibility of a three-channel mixer (with inputs for a microphone, instrument, and line level devices), a line output for linking multiple speakers, and bass and treble tone controls.

Expedition Express+ packs more than enough power to entertain small, medium and large groups alike with pristine, full range audio. Its built-in amplifier delivers 75 watts of power to the 2-way speaker design. A 6" woofer supports plenty of low end, while a 1" tweeter provides the shimmering highs that are essential to faithfully reproducing vocals and instruments. Lightweight and compact, the Expedition Express+ weighs less than 15 lb making it an excellent complement to any mobile speaker situation. The internal battery provides up to 20 hours of audio on a full charge or the Expedition Express+ can be plugged in to an outlet for continuous playback.

Whether you are looking for a sound system for use outdoors, in the classroom, for karaoke, for presentations, or performing live music, the Expedition Express+ provides high quality, portable audio in a small self-powered package.

We recommend you keep the following records for reference, as well as a copy of your sales receipt.

Serial number: _____

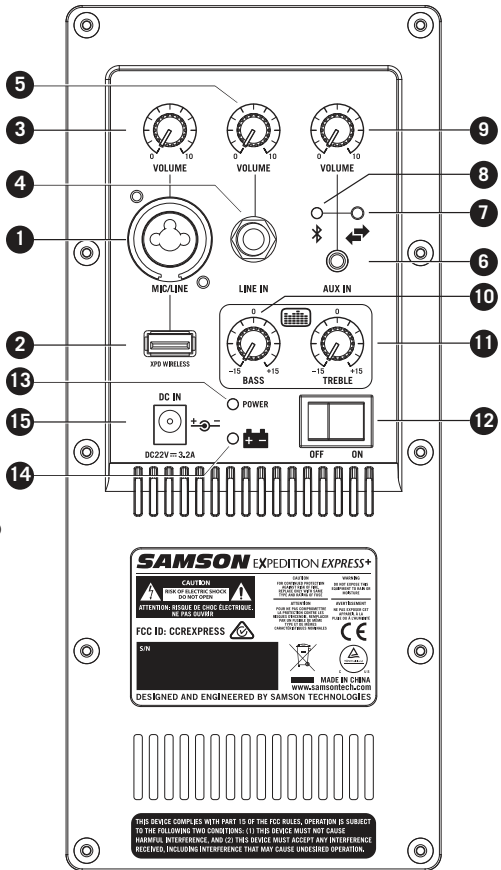
Date of purchase: _____

If you have any questions or comments regarding the Express+ Portable PA System or any other products from Samson, do not hesitate to contact us at **support@samsontech.com**.

With proper care and maintenance, your Express+ Portable PA System will operate trouble-free for many years. Should your Express+ Portable PA System ever require servicing, a Return Authorization (RA) number must be obtained before shipping your unit to Samson. Without this number, the unit will not be accepted. Please visit **www.samsontech.com/ra** for an RA number prior to shipping your unit. Please retain the original packing materials and, if possible, return the unit in its original carton. If your Express+ Portable PA System was purchased outside of the United States, contact your local distributor.

Express+ Controls and Connections

1. **MIC/LINE Input** - Use this XLR - 1/4" combo input to connect microphones or a line devices.
2. **XPD WIRELESS Input** - Connect a Samson XPD digital wireless USB receiver to this input. The wireless receiver gets its power from the Express+, so no additional power supply is needed.
3. **MIC/LINE VOLUME** - Used to control the level of the MIC/LINE and XPD Wireless inputs.
4. **LINE IN** - 1/4" input used to connect line level devices.
5. **LINE IN VOLUME** - Used to control the level of the 1/4" Line input.
6. **AUX INPUT** - Connect a line level device using a 1/8" (3.5mm) audio cable.
7. **Pairing Button** - Press this button to enable discoverable mode to pair with a *Bluetooth* audio device.
8. **Pairing Indicator** - Displays the *Bluetooth* status of the Expedition Express+ system.
9. **AUX / BLUETOOTH VOLUME** - Used to control the level of the 1/8" Aux and Bluetooth audio.
10. **BASS EQ** - Controls the low frequency tone of the entire system.
11. **TREBLE EQ** - Controls the high frequency tone of the entire system.
12. **POWER Switch** - Switches on the main power.
13. **POWER Indicator** - Lights green when the power switch is in the ON position.
14. **Battery Level Indicator** - Displays the status of the battery charge level. Indicator lights red while charging, and turns green when the battery is fully charged.
15. **DC INPUT** - Connect the supplied power adapter here.

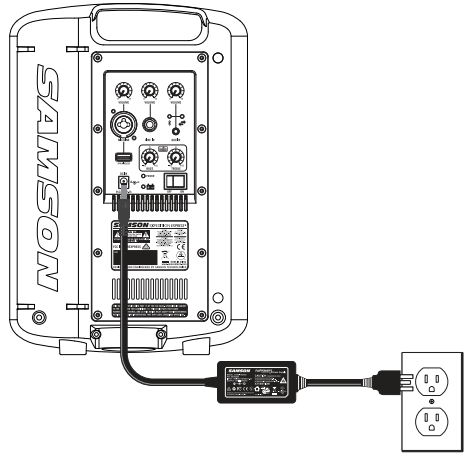


Charging the Battery

The Express+ has an internal, rechargeable battery capable of up to 20 hours of continuous audio on a full charge. **Even though the system may have some charge when first taken out of the box, it is recommended to fully charge your Express+ before first using the system.**

To charge the battery:

- Set the power switch to the “OFF” position.
- Connect the Expedition Express+ to an AC power outlet using the included power adapter.
- Keep the system plugged in until the Power Supply indicator turns green, indicating the battery is fully charged.



If you find that the operation time of the Express+ becomes noticeably decreased, even after fully charging, the battery should be replaced. Contact Samson customer service or your local distributor for a replacement battery.



The Express+ utilizes a sealed lead-acid gel cell battery. When not in use, the battery will slowly self-discharge. If you are planning not to use the Express+ for a long period of time, it is advised to fully charge the unit before storing.

It is also important to charge the unit every six months when not used. This will ensure a healthy battery and extend its life. If the battery is left with a very low charge for an extended period of time, it is possible to recharge the battery to working condition, but the charge time can take up to 72 hours.

Quick Start

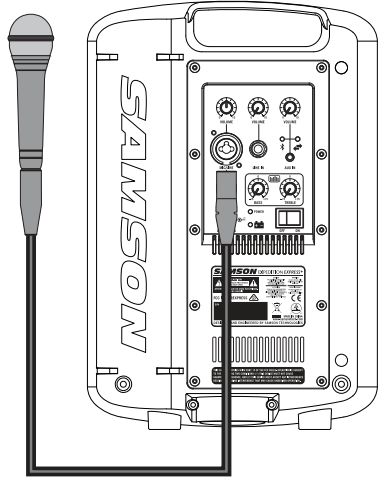
- Set the Express+ power switch to the OFF position, and fully turn all of the LEVEL controls counterclockwise to 0.
- If an outlet is available, connect the included power adapter to the DC input of the speaker, and plug it into an electrical outlet.
- Connect your audio sources.
- Set the Express+ power switch to the ON position.
- Turn the channel Volume controls up and set the input levels, following the steps below.

Making Connections

Microphone Input

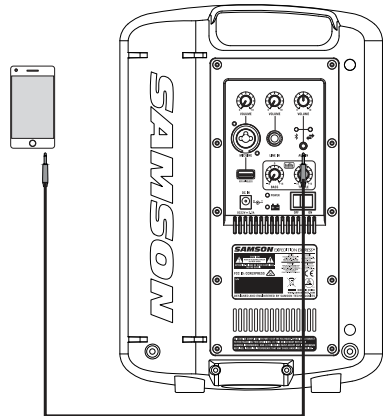
- Connect a microphone using a balanced XLR microphone cable.
- While speaking or singing at performance level into the microphone, slowly raise the channel MIC/LINE VOLUME control until you have reached the desired level.

NOTE: If not using the Mic Input, turn the MIC/LINE VOLUME control all the way down to keep out any unwanted noise.



Aux Input

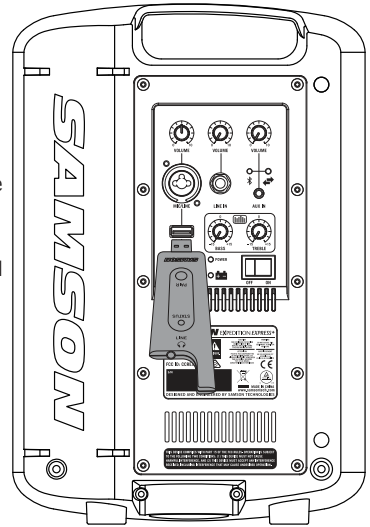
- Connect a line level device using 1/8" (3.5mm) cable.
- Set the output volume of your audio device to it's maximum setting.
- While playing music from a line level audio source, slowly raise the AUX/BLUETOOTH VOLUME control until you have reached the desired level.



Quick Start

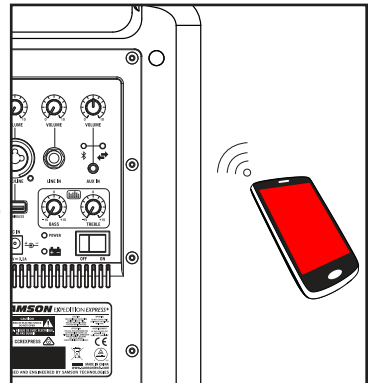
XPD Wireless Input (sold separately)

- Plug the XPD USB receiver into the XPD Wireless USB jack.
- Turn the MIC/LINE VOLUME knob on the Express+ completely counterclockwise to 0.
- Place a fresh set of AA (LR6) batteries in the transmitter battery holder, taking care to observe the polarity markings, then replace the cover.
- Turn on the power to the transmitter by pressing and holding Power switch; the indicator LED will light amber.
- Speak or sing into the mic at a normal performance level and raise the MIC/LINE VOLUME control until the desired level is reached.



Bluetooth®

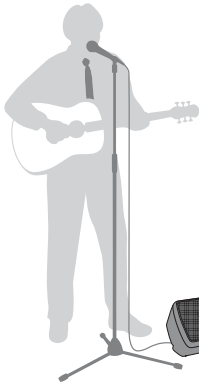
- Turn the BLUETOOTH VOLUME control down counterclockwise to 0.
- With the Express+ and your *Bluetooth* device powered on; press the PAIR button on the rear panel of the Express+ to make the speaker discoverable. The Pairing indicator will slowly flash blue.
- In the settings of your Bluetooth device, set it to “discover” available devices.
- From the Bluetooth device list, select the “Express Plus” device.
- If your device asks for a passkey, enter digits 0000 (four zeros) and press OK. Some devices may also ask you to accept the connection.
- The Express+ speaker indicates that pairing is complete when the indicator turns steady blue. You can now stream audio from your device to the Express+ speakers.
- With the volume control on your *Bluetooth* device turned up, play some music, and slowly raise the Express+ LINE/BLUETOOTH VOLUME control until you have reached the desired level.



Speaker Placement

The Expedition Express+ provides three different placement options for your specific situation.

For maximum sound coverage the Expedition Express+ can be used with a standard 1 3/8" speaker stand. The speaker should be raised above the heads of the listening audience. Take care when placing the speaker on a stand, to ensure that it is on a level, steady surface and will not tip over.



When using the speaker on the floor, or when the speaker is below the listener, the Expedition Express+ features a monitor angle position to project the sound up, towards the audience.

For smaller settings, the speaker can be placed vertically on a table or desk.

Take care when placing the Expedition Express+ in direct sunlight for long periods of time, as this may discolor or damage the unit.

Do not place the speaker on wet surfaces, as it can cause malfunction. If you notice condensation on the unit, dry the speaker before using or storing.

Avoiding Feedback

Feedback is the annoying howling and squealing that can be heard when the microphone picks up sound from the speaker. The sound is then re-amplified back through the speaker again, creating a feedback loop. Follow these steps to minimize the likelihood of feedback:

- Avoid pointing the microphone directly at the speaker. In general it is recommended that the microphone be positioned behind the speaker enclosure. This uses the directional characteristics of the speaker and microphone to your advantage.
- Keep the microphone as far from the speaker as possible. This will help achieve isolation between the speaker and the microphone, and allow you to increase the output of the Expedition Express+.
- Position the microphone as close to the sound source as possible. This will enable the microphone to pick up more direct sound, and allow you to reduce the microphone input gain control.
- Reduce the overall level of the speaker.

Specifications

Power Output	75 watts (peak)
Speakers	6" Woofer + 1" HF Driver
Mic/Instrument Input	XLR - 1/4" connector
Line Input	1/4"
MP3 Input	1/8"
LEVEL Controls	Mic/Line, Line, Aux/Bluetooth
Tone Controls	Treble & Bass, ± 15 dB Independent
<i>Bluetooth</i>	<i>Bluetooth</i> 5.0+BR+EDR, A2DP
Working Frequency	2.402GHz ~ 2.480GHz
RF Power	+2dBm
Built-in Battery	12V / 2.2AH, Rechargeable & Sealed
Operation	Up to 20 hours subject to operating conditions
Battery Charging	Approx. 5 hours for a single charge
AC/DC Adapter	SMPS AC100~240V, 50~60Hz/ DC22V 3A
Construction	Polypropylene
Grill	Perforated Steel Grill, powder coated
Mounting	Integral 1 3/8" Pole Mount Receptacle
Included Accessories	Handheld microphone, XLR microphone cable
Operating Temperature	-10°C ~ +40°C
Dimensions	8.75" x 8.25" x 12.75" 222mm x 210mm 323mm
Weight	11.9 lb 5.4 kg

**Having Trouble with your Expedition Express+?
We can help!**



**CONTACT OUR SUPPORT TEAM: support@samsontech.com
Our experts can help you resolve any issues.**

Follow us:



@samson



@samsontech



@samson_technologies

Samson Technologies Corp.
278-B Duffy Ave
Hicksville, New York 11801
Phone: 1-800-3-SAMSON (1-800-372-6766)
Fax: 631-784-2201
www.samsontech.com